

TM 9-4110-254-24P

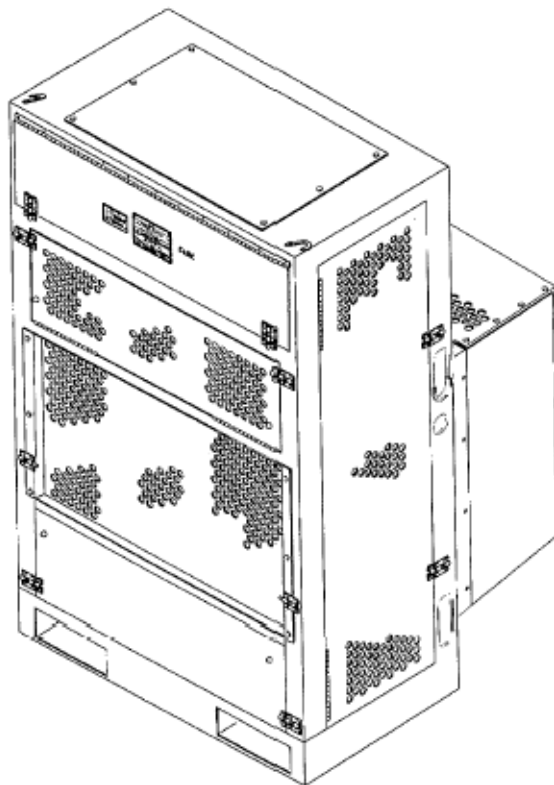
TECHNICAL MANUAL

UNIT, DIRECT SUPPORT, AND GENERAL SUPPORT MAINTENANCE
REPAIR PARTS AND SPECIAL TOOLS LIST

FOR

REFRIGERATION UNIT, MECHANICAL,
5K BTU, ELECTRIC
MODEL F5000RE

NSN 4110-01-389-9180



DISTRIBUTION STATEMENT A: Approved for public release; distribution is unlimited.

HEADQUARTERS, DEPARTMENT OF THE ARMY

31 MARCH 2004

THIS PAGE INTENTIONALLY LEFT BLANK

TM 10-4110-254-24P

INSERT LATEST UPDATED PAGES / WORK PACKAGES DESTROY SUPERSEDED DATA

LIST OF EFFECTIVE PAGES

Note: The portion of text affected by the update is indicated by a vertical line in the outer margins of the page. Updates to illustrations are indicated by miniature pointing hands. Updates to wiring diagrams are indicated by shaded areas.

Dates of issue for original and updated pages / work packages are:

Original .. 0 .. 31 March 04

TOTAL NUMBER OF PAGES FOR FRONT AND REAR MATTER IS 18 AND TOTAL NUMBER OF WORK PACKAGES IS 22 CONSISTING OF THE FOLLOWING:

Page / WP No.	*Revision No.	Page / WP No.	*Revision No.
Front Cover	0		
A-B	0		
i-v	0		
WP 0001 00 - 0022 00	0		
Authentication Page	0		
Electronic 2028 Instr.	0		
Sample DA Form 2028	0		
Blank DA Form 2028	0		
Back Cover	0		

*Zero in this column indicates an original page or work package

A/(B Blank)

THIS PAGE INTENTIONALLY LEFT BLANK

TECHNICAL MANUAL

**UNIT, DIRECT SUPPORT, AND GENERAL SUPPORT
MAINTENANCE REPAIR PARTS AND SPECIAL TOOLS LIST**

For

**REFRIGERATION UNIT, MECHANICAL,
5K BTU, ELECTRIC
MODEL F5000RE**

NSN 4110-01-389-9180

CURRENT AS OF: 01 June 2003

REPORTING ERRORS AND RECOMMENDING IMPROVEMENTS

You can help improve this manual. If you find any mistakes or if you know of a way to improve these procedures, please let us know. Mail your letter or DA Form 2028 (Recommended Changes to Publications and Blank Forms), or DA Form 2028-2 located in the back of this manual directly to: Commander, U.S. Tank-automotive and Armament Command, ATTN: AMSTA LC-CECT, Kansas Street, Natick, MA 01760-5052. You may also submit your recommended changes by email directly to amssbriml@natick.army.mil. A reply will be furnished directly to you. Instructions for sending an electronic 2028 may be found at the back of this manual immediately preceding the hard copy 2028.

DISTRIBUTION STATEMENT A: Approved for public release; distribution is unlimited.

TABLE OF CONTENTS

		<u>WP Sequence No.</u>
LIST OF EFFECTIVE PAGES		A
INTRODUCTION		0001 00
Group	01 Panels and Guards	
	Panels and Guards	0002 00
Group	02 Electrical and Control	
	Control Box Assembly	0003 00
	Control Box Wires and Cables	0004 00
	Control Box	0005 00
	Switches and Electrical Enclosure Assembly	0006 00
Group	03 Power Transmission and Air Handling	
	Power Transmission and Air Handling	0007 00

TABLE OF CONTENTS - Continued

		<u>WP Sequence No.</u>	
Group	04	Refrigeration System	
		Refrigerant Piping, Condenser Section	0008 00
		Pressure Switches	0009 00
		Temperature and Refrigerant Gauges.....	0010 00
		Evaporator Assembly.....	0011 00
		Compressor	0012 00
Group	05	Housing	
		Heat Shield Frame.....	0013 00
		Heat Shield Gaskets.....	0014 00
		Unit Marking Plates and Condenser Frame	0015 00
Group	06	Bulk Material	
		Bulk.....	0016 00
		SPECIAL TOOLS LIST (Not Applicable)	0017 00
		National Stock Number Index	0018 00
		Part Number Index.....	0019 00

**REFRIGERATION UNIT, MECHANICAL, 5K BTU, ELECTRICAL
REPAIR PARTS AND SPECIAL TOOLS LIST (RPSTL) INTRODUCTION**

INTRODUCTION

SCOPE

This RPSTL lists and authorizes spares and repair parts; special tools; special test, measurement, and diagnostic equipment (TMDE); and other special support equipment required for performance of unit, direct support, and general support maintenance of the Refrigeration Unit, Mechanical, 5K BTU, Electric. It authorizes the requisitioning, issue, and disposition of spares, repair parts, and special tools as indicated by the source, maintenance, and recoverability (SMR) codes.

GENERAL

In addition to the Introduction work package, this RPSTL is divided into the following work packages.

1. Repair Parts List Work Packages. Work packages containing lists of spares and repair parts authorized by this RPSTL for use in the performance of maintenance. These work packages also include parts which must be removed for replacement of the authorized parts. Parts lists are composed of functional groups in ascending alphanumeric sequence, with the parts in each group listed in ascending figure and item number sequence. Sending units, brackets, filters, and bolts are listed with the component they mount on. Bulk materials are listed by item name in FIG. BULK at the end of the work packages. Repair parts kits are listed separately in their own functional group and work package. Repair parts for reparable special tools are also listed in a separate work package. Items listed are shown on the associated illustrations.

2. Special Tools List Work Packages. Work packages containing lists of special tools, special TMDE, and special support equipment authorized by this RPSTL (as indicated by Basis of Issue (BOI) information in the DESCRIPTION AND USABLE ON CODE (UOQ column). Tools that are components of common tool sets and/or Class VII are not listed.

3. Cross-Reference Indexes Work Packages. There are two cross-reference indexes work packages in this RPSTL: the National Stock Number (NSN) Index workpackage and the Part Number (PIN) Index workpackage, The National Stock Number Index workpackage refers you to the figure and item number. The Part Number Index workpackage refers you to the figure and item number.

EXPLANATION OF COLUMNS IN THE REPAIR PARTS LIST AND SPECIAL TOOLS LIST WORK PACKAGES

ITEM NO. (Column (1)). Indicates the number used to identify items called out in the illustration.

SMR CODE. (Column (2)). The SMR code containing supply/requisitioning information, maintenance level authorization criteria, and disposition instruction, as shown in the following breakout::

<u>Source Code</u>	<u>Maintenance Code</u>	<u>Recoverability Code</u>
XX	XX	X
1st two positions: How to get an item.	3rd position: Who can install, replace, or use the item.	4th position: Who can do complete repair* on the item.
		5th position: Who determines disposition action on unserviceable items.

*Complete Repair: Maintenance capacity, capability, and authority to perform all corrective maintenance tasks of the "Repair" function in a use/user environment in order to restore serviceability to a failed item.

Source Code. The source code tells you how you get an item needed for maintenance, repair, or overhaul of an end item/equipment. Explanations of source codes follow:

SOURCE CODE	EXPLANATION
PA	Stock items; use the applicable NSN to requisition/request items with these source codes. They are authorized to the level indicated by the code entered in the 3 rd position of the SMR code.
PB	
PC	
PD	
PE	
PF	
PG	
KD	
KF	
KB	
	NOTE
	Items coded PC are subject to deterioration.
MO – (Made at unit/AVUM Level) MF – (Made at DS/AVIM Level) MH – (Made at GS Level) ML – (Made at SRA) MD – (Made at Depot)	Items with these codes are not to be requisitioned/requested individually. They must be made from bulk material which is identified by the P/N in the DESCRIPTION and USABLE ON CODE (UOC) column and listed in the bulk material group work package of the RPSTL. If the item is authorized to you by the 3 rd position code of the SMR code, but the source code indicates it is made at a higher level, order the item from the higher level of maintenance.
AO – (Assembled by unit AVUM Level) AF – (Assembled by DS/AVIM Level) AH – (Assembled by GS Level) AL – (Assembled by SRA) AD – (Assembled by Depot)	Items with these codes are not to be requested/requisitioned individually. The parts that make up the assembled item must be requisitioned or fabricated and assembled at the level of maintenance indicated by the source code. If the 3 rd position code of the SMR code authorizes you to replace the item, but the source code indicates the item is assembled at a higher level, order the item from the higher level of maintenance.
XA -	Do not requisition an XA-coded item. Order the next higher assembly. (Refer to the NOTE below.)
XB -	If an item is not available from salvage, order it using the CAGEC and P/N.
SOURCE CODE – continued	EXPLANATION - continued
XC -	Installation drawings, diagrams, instruction sheets, field service drawings; identified by manufacturer's P/N.
XD -	Item is not stocked. Order an XD-coded item through normal supply channels using the CAGEC and P/N given, if no NSN is available.

NOTE Cannibalization or controlled exchange, when authorized, may be used as a source of supply for items with the above source codes except for those items source coded "XA" or those aircraft support items restricted by requirements of AR 750- 1.

Maintenance Code. Maintenance codes tell you the level(s) of maintenance authorized to use and repair support items. The maintenance codes are entered in the third and fourth positions of the SMR code as follows:

Third Position. The maintenance code entered in the third position tells you the lowest maintenance level authorized to remove, replace, and use an item. The maintenance code entered in the third position will indicate authorization to the following levels of maintenance:

Maintenance Code

Application/Explanation

- C --- Crew or operator maintenance done within unit/AVUM maintenance.
- O --- Unit level/AVUM maintenance can remove, replace, and use the item.
- F --- Direct support/AVIM maintenance can remove, replace, and use the item.
- H --- General support maintenance can remove, replace, and use the item.
- L --- Specialized repair activity can remove, replace, and use the item.
- D --- Depot can remove, replace, and use the item.

Fourth Position. The maintenance code entered in the fourth position tells you whether or not the item is to be repaired and identifies the lowest maintenance level with the capability to do complete repair (perform all authorized repair functions).

NOTE

Some limited repair may be done on the item at a lower level of maintenance, if authorized by the Maintenance Allocation Chart (MAC) and SMR codes.

Maintenance Code

Application/Explanation

- O --- Unit/AVUM is the lowest level that can do complete repair of the item.
- F --- Direct support/AVIM is the lowest level that can do complete repair of the item.
- H --- General support is the lowest level that can do complete repair of the item.
- L --- Specialized repair activity is the lowest level that can do complete repair of the item.
- D --- Depot is the lowest level that can do complete repair of the item.
- Z --- Nonreparable. No repair is authorized.
- B --- No repair is authorized. No parts or special tools are authorized for maintenance of "B" coded item. However, the item may be reconditioned by adjusting, lubricating, etc., at the user level.

Recoverability Code. Recoverability codes are assigned to items to indicate the disposition action on unserviceable items. The recoverability code is shown in the fifth position of the SMR code as follows:

**Recoverability
Code****Application/Explanation**

Z ---	Nonreparable item. When unserviceable, condemn and dispose of the item at the level of maintenance shown in the third position of the SMR code.
O ---	Reparable item. When uneconomically repairable, condemn and dispose of the item at the unit level.
F ---	Reparable item. When uneconomically repairable, condemn and dispose of the item at the direct support level.
H ---	Reparable item. When uneconomically repairable, condemn and dispose of the item at the general support level.
D ---	Reparable item. When beyond lower level repair capability, return to depot. Condemnation and disposal of item are not authorized below depot level.
L ---	Reparable item. Condemnation and disposal not authorized below Specialized Repair Activity (SRA).
A ---	Item requires special handling or condemnation procedures because of specific reasons (such as precious metal content, high dollar value, critical material, or hazardous material). Refer to appropriate

NSN (Column (3)). The NSN for the item is listed in this column.

CAGEC (Column (4)). The Commercial and Government Entity Code (CAGEC) is a five-digit code which is used to identify the manufacturer, distributor, or Government agency/activity that supplies the item.

PART NUMBER (Column (5)). Indicates the primary number used by the manufacturer (individual, company, firm, corporation, or Government activity), which controls the design and characteristics of the item by means of its engineering drawings, specifications, standards, and inspection requirements to identify an item or range of items.

NOTE

When you use an NSN to requisition an item, the item you receive may have a different PIN from the number listed.

DESCRIPTION AND USABLE ON CODE (UOQ (Column (6))). This column includes the following information:

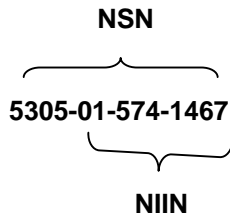
1. The federal item name, and when required, a minimum description to identify the item.
2. P/Ns of bulk materials are referenced in this column in the line entry to be manufactured or fabricated.
3. Hardness Critical Item (HCI). A support item that provides the equipment with special protection from electromagnetic pulse (EMP) damage during a nuclear attack.
4. The statement END OF FIGURE appears just below the last item description in column (6) for a given figure in both the repair parts list and special tools list work packages.

QTY (Column (7)). The QTY (quantity per figure) column indicates the quantity of the item used in the breakout shown on the illustration/figure, which is prepared for a functional group, subfunctional group, or an assembly. A "V" appearing in this column instead of a quantity indicates that the quantity is variable and quantity may change from application to application.

EXPLANATION OF CROSS-REFERENCE INDEXES WORK PACKAGES FORMAT AND COLUMNS

I. National Stock Number (NSN) Index Work Package.

STOCK NUMBER Column. This column lists the NSN in National item identification number (NIIN) sequence. The NIIN consists of the last nine digits of the NSN.



When using this column to locate an item, ignore the first 4 digits of the NSN. However, the complete NSN should be used when ordering items by stock number.

FIG. Column. This column lists the number of the figure where the item is identified/located. The figures are in numerical order in the repair parts list and special tools list work packages.

ITEM Column. The item number identifies the item associated with the figure listed in the adjacent FIG. column. This item is also identified by the NSN listed on the same line.

2. Part Number (P/N) Index Work Package. P/Ns in this index are listed in ascending alphanumeric sequence (vertical arrangement of letter and number combinations which places the first letter or digit of each group in order A through Z, followed by the numbers 0 through 9 and each following letter or digit in like order).

PART NUMBER Column. Indicates the P/N assigned to the item.

FIG. Column. This column lists the number of the figure where the item is identified/located in the repair parts list and special tools list work packages.

ITEM Column. The item number is the number assigned to the item as it appears in the figure referenced in the adjacent figure number column."

SPECIAL INFORMATION

Fabrication Instructions. Bulk materials required to manufacture items are listed in the bulk material functional group of this RPSTL. Part numbers for bulk material are also referenced in the Description Column of the line item entry for the item to be manufactured/fabricated.

Index Numbers. Items which have the word BULK in the figure column will have an index number shown in the item number column. This index number is a cross-reference between the NSN / P/N index work packages and the bulk material list in the repair parts list work package."

HOW TO LOCATE REPAIR PARTS

1. When NSNs or P/Ns Are Not Known.

First. Using the table of contents, determine the assembly group to which the item belongs. This is necessary since figures are prepared for assembly groups and subassembly groups, and lists are divided into the same groups.

Second. Find the figure covering the functional group or the subfunctional group to which the item belongs.

Third. Identify the item on the figure and note the number(s).

Fourth. Look in the repair parts list work packages for the figure and item numbers. The NSNs and part numbers are on the same line as the associated item numbers.

2. When NSN Is Known.

First. If you have the NSN, look in the STOCK NUMBER column of the NSN index work package. The NSN is arranged in NIIN sequence. Note the figure and item number next to the NSN.

Second. Turn to the figure and locate the item number. Verify that the item is the one you are looking for.

3. When P/N Is Known.

First. If you have the P/N and not the NSN, look in the PART NUMBER column of the P/N index work package. Identify the figure and item number.

Second. Look up the item on the figure in the applicable repair parts list work package."

ABBREVIATIONS

All abbreviations contained in this RPSTL are common abbreviations.

THIS PAGE INTENTIONALLY LEFT BLANK

UNIT, DIRECT SUPPORT AND GENERAL SUPPORT MAINTENANCE

REFRIGERATION UNIT, MECHANICAL, 5K BTU, ELECTRIC
MODEL F5000RE

REFRIGERATION UNIT, MECHANICAL, 5K BTU ELECTRIC

REPAIR PARTS LIST

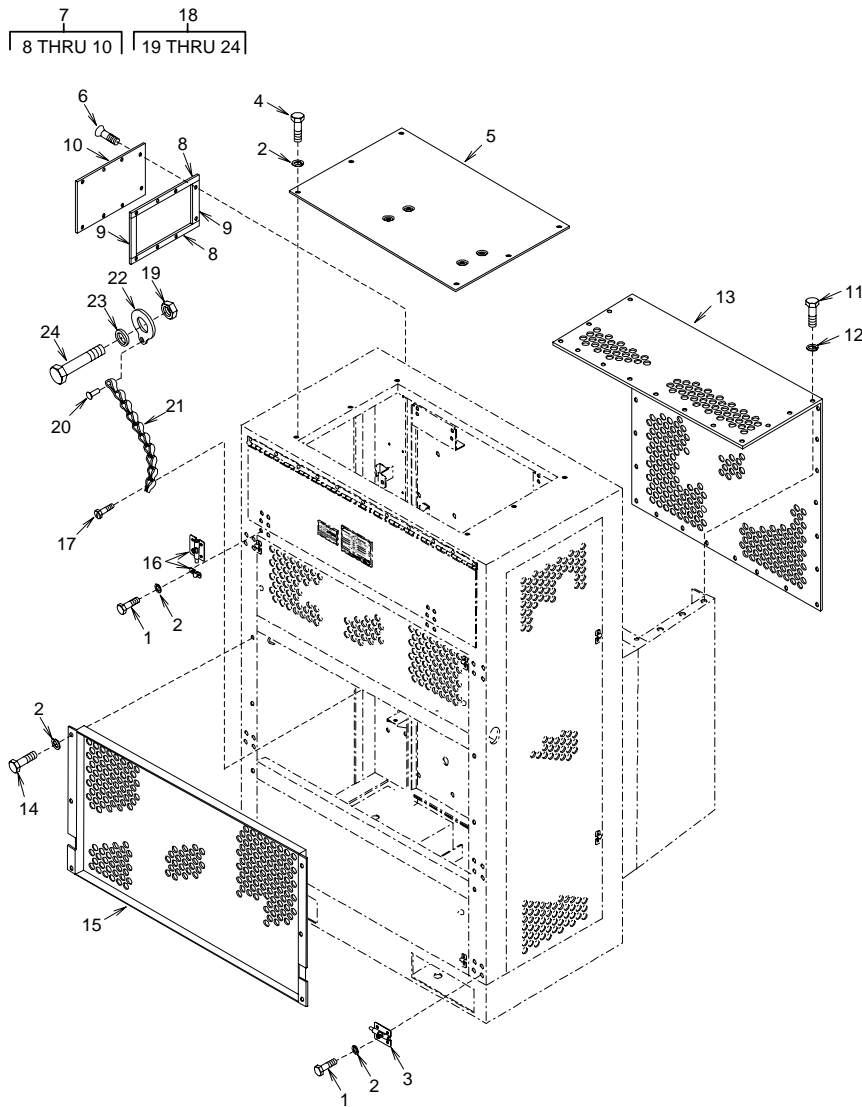


Figure 1. Panels and Guards

(1) ITEM NO.	(2) SMR CODE	(3) NSN	(4) CAGEC	(5) PART NUMBER	(6) DESCRIPTION AND USABLE ON CODE (UOC)	(7) QTY
GROUP 01 PANELS AND GUARDS						
FIGURE 1 PANELS AND GUARDS						
1	XDOZZ		94833	500K1928-21	BOLT,HEX HEAD	52
2	XDOZZ		94833	500K1950-3	WASHER,SPRING LOCK.....	64
3	PAOZZ	5340-01-486-2051	81348	A-A-466/TYI- 2.5L -FZ	BOLT,BARREL (SLIDE BOLT ONLY USED) ..	2
4	XDOZZ		94833	500K1928-20	BOLT,HEX HEAD	6
5	PAOZZ	5340-01-492-4334	94833	148K0103-1	COVER,ACCESS.....	1
6	PAOZZ	5305-00-088-9666	96906	MS24693-C51	SCREW,MACHINE.....	8
7	XDOZZ		94833	148K0246-1	ACCESS PANEL ASSY.....	1
8	MFFZZ		94833	12284-5-9750	.GASKET, 0.125 X 0.500 X 9.75 IN, MAKE FROM GASKET, P/N ASTM-D-1056-2A2C2F2.....	2
9	MFFZZ		94833	12284-5-5000	.GASKET, 0.125 X 0.500 X 5 IN LG, MAKE FROM GASKET, P/N ASTM-D-1056-2A2C2F2.....	2
10	PAOZZ	5340-01-492-4343	94833	148K0145-1	COVER,ACCESS.....	1
11	XDOZZ		94833	500K1928-13	BOLT,HEX HEAD....	34
12	XDOZZ		94833	500K1926-2	WASHER,FLAT	34
13	PAOZZ	5340-01-492-4615	94833	148K0110-1	GRILLE,METAL.....	1
14	XDOZZ		94833	500K1928-22	BOLT,HEX HEAD.....	6
15	PAOZZ	5340-01-491-4667	94833	148K0073-1	GUARD,FAN IMPELLER.....	1
16	PAOZZ	5340-01-486-2051	81348	A-A-466/TYI- 2.5L -FZ	BOLT,BARREL.....	2
17	PAOZZ	5305-01-088-5322	96906	MS51851-74	SCREW,TAPPING.....	4
18	XDOZZ		94833	148K0157-1	BOLT,UNIT MOUNTING.....	4
19	XDOZZ		94833	500K1927-9	.NUT,HEX,SELF-LOCKING	1
20	PAOZZ	5320-01-094-0388	05693	SSPQ-43	.RIVET,BLIND.....	1
21	MOOZZ		94833	12290-8-8000	.CHAIN,SASH, MAKE FROM NUMBER 8 SASH CHAIN (8.00 IN LG)... ..	1
22	XBOZZ		94833	148K0158	.SWIVEL,UNIT MOUNTING BOLT	1
23	XDOZZ		94833	148K0203	.SPACER,UNIT MOUNTING BOLT	1
24	XDOZZ		94833	53573-10-36	.SCREW,CAP,HEX HEAD.....	1

END OF FIGURE

THIS PAGE INTENTIONALLY LEFT BLANK

THIS PAGE INTENTIONALLY LEFT BLANK

UNIT, DIRECT SUPPORT AND GENERAL SUPPORT MAINTENANCE

REFRIGERATION UNIT, MECHANICAL, 5K BTU, ELECTRIC
MODEL F500RE

ELECTRICAL AND CONTROL
CONTROL BOX ASSEMBLY

REPAIR PARTS LIST

11
12 THRU 14 AND FIGURES 3 AND 4

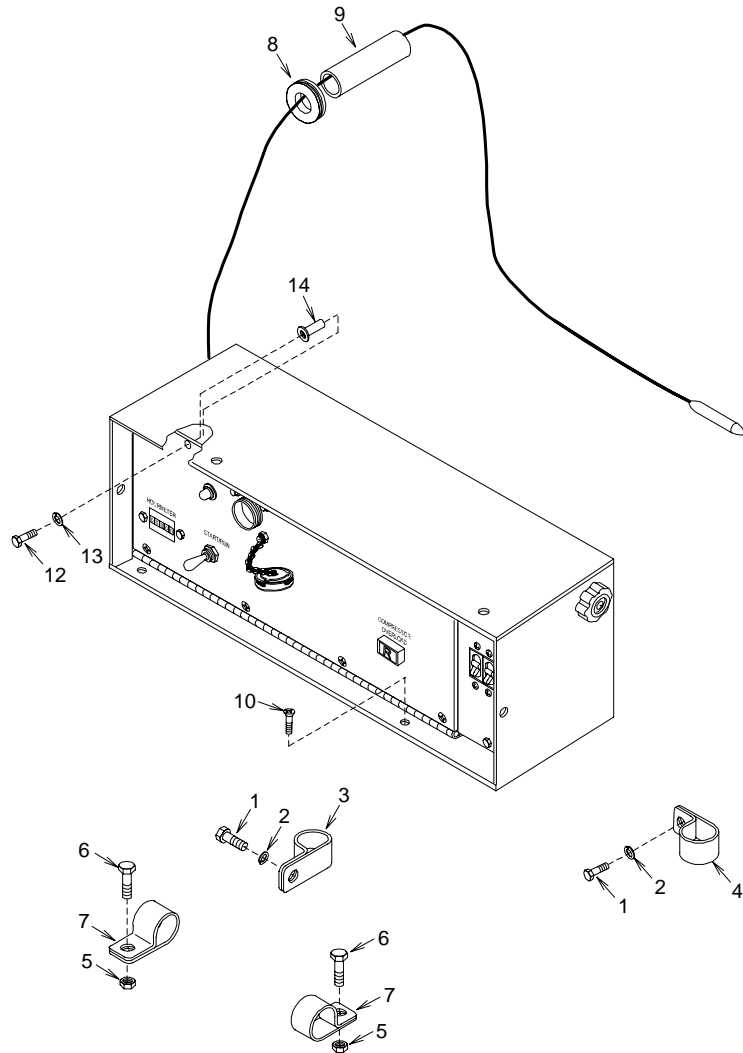


Figure 2. Control Box Assembly

(1) ITEM NO.	(2) SMR CODE	(3) NSN	(4) CAGEC	(5) PART NUMBER	(6) DESCRIPTION AND USABLE ON CODE (UOC)	(7) QTY
GROUP 02 ELECTRICAL AND CONTROL						
FIGURE 2 CONTROL BOX ASSEMBLY						
1	XDOZZ		94833	500K1928-22	BOLT,HEX HEAD.....	2
2	XDOZZ		94833	500K1950-3	WASHER,SPRING LOCK.....	2
3	PAOZZ	5340-00-584-6556	96906	MS21919WDG-10	CLAMP,LOOP.....	1
4	PAOZZ	5340-00-286-9427	96906	MS21919WDG-12	CLAMP,LOOP.....	1
5	XDOZZ		94833	500K1927-3	NUT,HEX,SELF-LOCKING.....	2
6	XDOZZ		94833	500K1928-19	BOLT,HEX HEAD.....	2
7	PAOZZ	5340-00-200-8560	96906	MS21919WDG5	CLAMP,LOOP.....	2
8	PAOZZ	5325-00-185-0004	96906	MS35489-40	GROMMET,NONMETALLIC.....	1
9	XDOZZ		94833	152K0131	SLEEVE,ACCESS.....	1
10	XDOZZ		96906	MS24693-C72	SCREW,MACHINE.....	6
11	XDOOO		94833	149K0009-1	CONTROL BOX ASSEMBLY	1
12	XDOZZ		94833	500K1928-19	.BOLT,HEX HEAD.....	2
13	XDOZZ		94833	500K1950-3	.WASHER,SPRING LOCK.....	2
14	PAOZZ	5310-01167-2415	96906	MS27130-CR19K	.NUT,PLAIN,BLIND RIVET	2

END OF FIGURE

THIS PAGE INTENTIONALLY LEFT BLANK

UNIT, DIRECT SUPPORT AND GENERAL SUPPORT MAINTENANCE

REFRIGERATION UNIT, MECHANICAL, 5K BTU, ELECTRIC
MODEL F5000RE

ELECTRICAL AND CONTROL
CONTROL BOX WIRES AND CABLES

REPAIR PARTS LIST

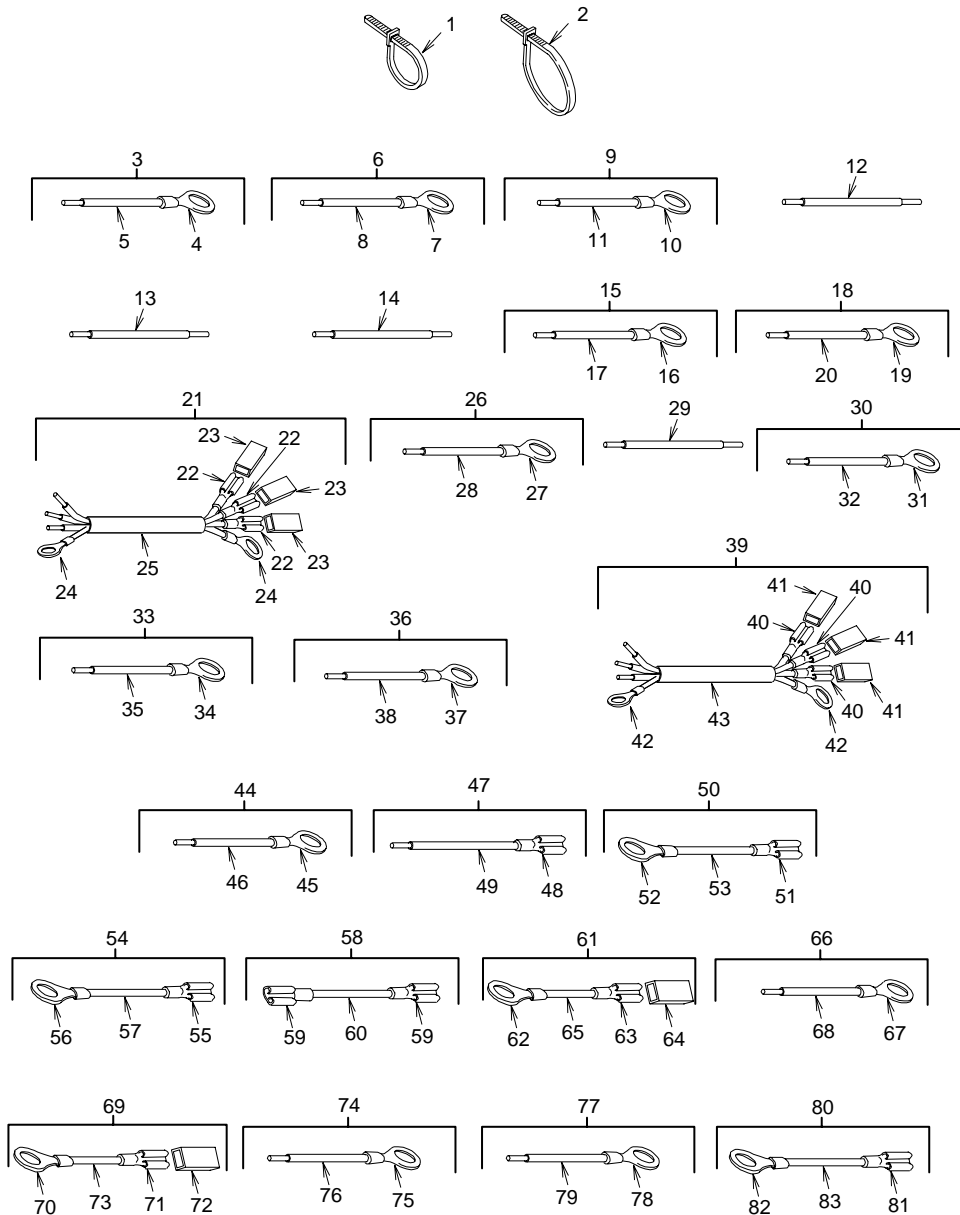


Figure 3. Control Box Wires and Cables
Sheet 1 of 2

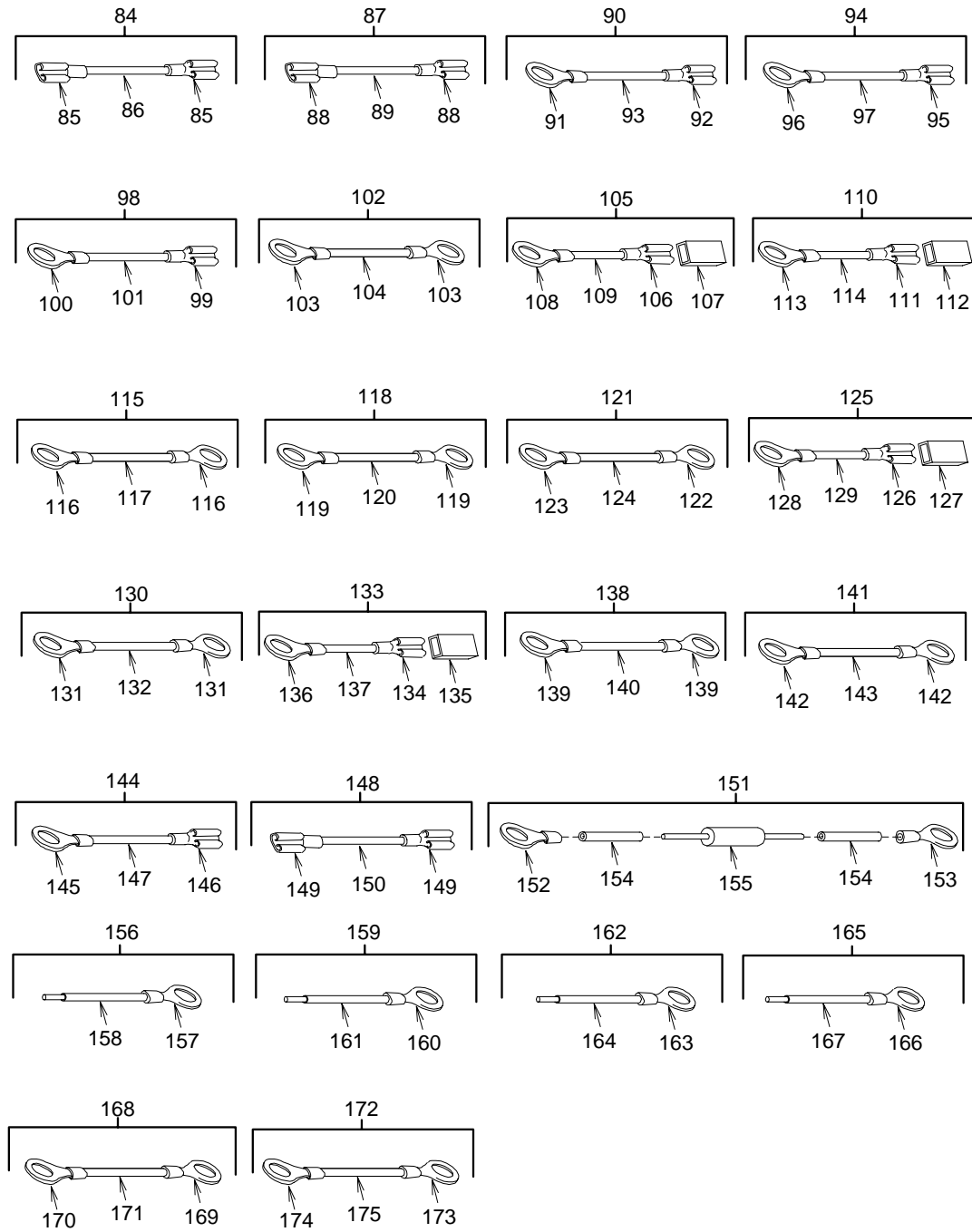


Figure 3. Control Box Wires and Cables
Sheet 2 of 2

(1) ITEM NO.	(2) SMR CODE	(3) NSN	(4) CAGEC	(5) PART NUMBER	(6) DESCRIPTION AND USABLE ON CODE (UOC)	(7) QTY
GROUP 02 ELECTRICAL AND CONTROL						
FIGURE 3 CONTROL BOX WIRES AND CABLES						
1	PAOZZ	5975-00-156-3253	96906	MS3367-2-9	STRAP,TIEDOWN,ELECTTRICAL	10
2	PAOZZ	5975-00-727-5153	96906	MS3367-4-9	STRAP,TIEDOWN,ELECTRICAL	10
3	AOOOO		94833	149K0021-1	..LEAD,ELECTRICAL.....	1
4	PAOZZ	5940-00-143-4794	98410	C-828-10	..TERMINAL,LUG.....	1
5	MOOZZ		94833	149K0021-1/1	..WIRE,ELECTRICAL, 24 IN LG,MAKE MAKE FROM WIRE,ELECTRICAL, P/N M5086/2-12-9.....	1
6	AOOOO		94833	149K0021-2	..LEAD,ELECTRICAL.....	1
7	PAOZZ	5940-00-143-4794	98410	C-828-10	..TERMINAL,LUG.....	1
8	MOOZZ		94833	149K0021-2/1	..WIRE,ELECTRICALM, 24 IN LG, MAKE FROM WIRE,ELECTRICAL, P/N M5086/2-12-9.....	1
9	AOOOO		94833	149K0021-3	..LEAD,ELECTRICAL.....	1
10	PAOZZ	5940-00-143-4794	98410	C-828-10	..TERMINAL,LUG.....	1
11	MOOZZ		94833	149K0021-3/1	..WIRE,ELECTRICAL, 24 IN LG, MAKE FROM WIRE,ELECTRICAL, P/N M5086/2-14-9.....	1
12	MOOZZ		94833	149K0021-4	..LEAD,ELECTRICAL, 12 IN LG, MAKE FROM WIRE,ELECTRICAL, P/N M5086/2-14-9.....	1
13	MOOZZ		94833	149K0021-5	..LEAD,ELECTRICAL, 12 IN LG, MAKE FROM WIRE,ELECTRICAL, P/N M5086/2-14-9.....	1
14	MOOZZ		94833	149K0021-6	..LEAD,ELECTRICAL, 12 IN LG,MAKE FROM WIRE,ELECTRICAL, P/N M5086/2- 14-9.....	1
15	AOOOO		94833	149K0021-7	..LEAD,ELECTRICAL.....	1
16	PAOZZ	5940-00-143-4774	98410	BB-837-08	..TERMINAL,LUG.....	1
17	MOOZZ		94833	149K0021-7/2	..WIRE,ELECTRICAL, 12 IN LG, MAKE FROM WIRE,ELECTRICAL, P/N M5086/2-14-9.....	1
18	AOOOO		94833	149K0021-8	..LEAD,ELECTRICAL.....	1
19	PAOZZ	5940-00-143-4774	98410	BB-837-08	..TERMINAL,LUG.....	1
20	MOOZZ		94833	149K0021-8/2	..WIRE,ELECTRIC, 12 IN LG, MAKE FROM WIRE,ELECTRICAL, P/N M5086/2-14-9.....	1
21	AOOOO		94833	149K0021- 10 To 13	..CABLE.....	1
22	PAOZZ	5940-00-143-4661	89346	165565R1	..TERMINAL,QUICK DISCONNECT	3

(1) ITEM NO.	(2) SMR CODE	(3) NSN	(4) CAGEC	(5) PART NUMBER	(6) DESCRIPTION AND USABLE ON CODE (UOC)	(7) QTY
23	PAOZZ	5970-00-494-8285	00779	480054-3	..INSULATOR,HOUSING.....	3
24	PAOZZ	5940-00-143-4794	98410	C-828-10	..TERMINAL,LUG.....	2
25	MOOZZ		94833	149K0021-10/13	..CABLE, 72 IN LG, MAKE FROM CABLE, P/N (94833) 500K1915-3.....	1
26	AOOOO		94833	149K0021-14	..LEAD,ELECTRICAL.....	1
27	PAOZZ	5940-00-143-4771	98410	AA-821-10	..TERMINAL,LUG.....	1
28	MOOZZ		94833	149K0021-14/3	..WIRE,ELECTRICAL, 30 IN LG, MAKE FROM WIRE,ELECTRICAL, P/N M5086/2-18-9.....	1
29	MOOZZ		94833	149K0021-15	..LEAD,ELECTRICAL, 12 IN LG, MAKE FROM WIRE,ELECTRICAL, P/N M5086/2-18-9.....	1
30	AOOOO		94833	149K0021-16	..LEAD,ELECTRICAL.....	1
31	PAOZZ	5940-00-204-8966	56501	RA853	..TERMINAL,LUG.....	1
32	MOOZZ		94833	149K0021-16/3	..WIRE,ELECTRICAL, 12 IN LG, MAKE FROM WIRE,ELECTRICAL, P/N M5086/2-18-9.....	1
33	AOOOO		94833	149K0021-17	..LEAD,ELECTRICAL.....	1
34	PAOZZ	5940-00-204-8966	56501	RA853	..TERMINAL,LUG.....	1
35	MOOZZ		94833	149K0021-17/3	..WIRE,ELECTRICAL, 106 IN LG, MAKE FROM WIRE,ELECTRICAL, P/N M5086/2-18-9.....	1
36	AOOOO		94833	149K0021-18	..LEAD,ELECTRICAL.....	1
37	PAOZZ	5940-00-204-8966	56501	RA853	..TERMINAL,LUG.....	1
38	MOOZZ		94833	149K0021-18/3	..WIRE,ELECTRICAL, 104 IN LG, MAKE FROM WIRE,ELECTRICAL, P/N M5086/2-18-9.....	1
39	AOOOO		94833	149K0021- 19 TO 22	..CABLE.....	1
40	PAOZZ	5940-00-143-4661	00779	41798	..TERMINAL,QUICK DISCONNECT	3
41	PAOZZ	5970-00-494-8285	00779	480054-3	..INSULATOR,HOUSING.....	3
42	PAOZZ	5940-00-143-4780	81343	AS25036-108	..TERMINAL,LUG.....	2
43	MOOZZ		94833	149K0021-19/14	..CABLE, 72 IN LG, MAKE FROM CABLE, P/N (94833) 500K1915-1.....	1
44	AOOOO		94833	149K0021-23	..LEAD,ELECTRICAL.....	1
45	PAOZZ	5940-00-204-8966	96906	MS25036-102	..TERMINAL,LUG.....	1
46	MOOZZ		94833	149K0021-23/3	..WIRE,ELECTRICAL, 24 IN LG, MAKE FROM WIRE,ELECTRICAL, P/N M5086/2-18-9.....	1
47	AOOOO		94833	149K0021-24	..LEAD,ELECTRICAL.....	1
48	PAOZZ	5940-00-948-9686	00779	42599-2	..TERMINAL,QUICK DISCONNECT	1
49	MOOZZ		94833	149K0021-24/3	..WIRE,ELECTRICAL, 12 IN LG, MAKE FROM WIRE,ELECTRICAL, P/N M5086/2-18-9.....	1

(1) ITEM NO.	(2) SMR CODE	(3) NSN	(4) CAGEC	(5) PART NUMBER	(6) DESCRIPTION AND USABLE ON CODE (UOC)	(7) QTY
50	AOOOO		94833	149K0021-25	.LEAD,ELECTRICAL.....	1
51	XDOZZ		1W654	B-972	..TERMINAL,FEMALE.....	1
52	PAOZZ	5940-00-204-8966	96906	MS25036-102	..TERMINAL,LUG.....	1
53	MOOZZ		94833	149K0021-25/3	..WIRE,ELECTRICAL, 120 IN LG, MAKE FROM WIRE,ELECTRICAL, P/N M5086/2-18-9.....	1
54	AOOOO		94833	149K0021-26	.LEAD,ELECTRICAL.....	1
55	PAOZZ	5940-00-948-9686	00779	42599-2	..TERMINAL,QUICK DISCONNECT ..	1
56	PAOZZ	5940-00-204-8966	96906	MS25036-102	..TERMINAL,LUG.....	1
57	MOOZZ		94833	149K0021-26/3	..WIRE,ELECTRICAL, 24 IN LG, MAKE FROM WIRE,ELECTRICAL, P/N M5086/2-18-9.....	1
58	AOOOO		94833	149K0021-27	.LEAD,ELECTRICAL.....	1
59	PAOZZ	5940-00-948-9686	00779	42599-2	TERMINAL,QUICK DISCONNECT ...	2
60	MOOZZ		94833	149K0021-27/3	..WIRE,ELECTRICAL, 12 IN LG, MAKE FROM WIRE,ELECTRICAL, P/N M5086/2-18-9.....	1
61	AOOOO		94833	149K0021-28	.LEAD,ELECTRICAL.....	1
62	PAOZZ	5940-00-557-1629	1W654	A-521-08	..TERMINAL,LUG.....	1
63	PAOZZ	5940-00-620-9780	00779	42282-2	TERMINAL,QUICK DISCONNECT ...	1
64	PAOZZ	5970-00-494-8285	00779	480054-3	..INSULATOR,HOUSING.....	1
65	MOOZZ		94833	149K0021-28/3	..WIRE,ELECTRICAL, 120 IN LG, MAKE FROM WIRE,ELECTRICAL, P/N M5086/2-18-9.....	1
66	AOOOO		94833	149K0021-29	.LEAD,ELECTRICAL.....	1
67	PAOZZ	5940-00-204-8966	96906	MS25036-102	..TERMINAL,LUG.....	1
68	MOOZZ		94833	149K0021-29/3	..WIRE,ELECTRICAL, 108 IN LG, MAKE FROM WIRE,ELECTRICAL, P/N M5086/2-18-9.....	1
69	AOOOO		94833	149K0021-30	.LEAD,ELECTRICAL.....	1
70	PAOZZ	5940-00-557-1629	1W654	A-521-08	..TERMINAL,LUG.....	1
71	PAOZZ	5940-00-620-9780	00779	42282-2	TERMINAL,QUICK DISCONNECT ...	1
72	PAOZZ	5970-00-494-8285	00779	480054-3	..INSULATOR,HOUSING.....	1
73	MOOZZ		94833	149K0021-30/3	..WIRE,ELECTRICAL, 120 IN LG, MAKE FROM WIRE,ELECTRICAL, P/N M5086/2-18-9.....	1
74	AOOOO		94833	149K0021-31	.LEAD,ELECTRICAL.....	1
75	PAOZZ	5940-00-204-8966	56501	RA853	..TERMINAL,LUG.....	1
76	MOOZZ		94833	149K0021-31/3	..WIRE,ELECTRICAL, 106 IN LG, MAKE FROM WIRE,ELECTRICAL, P/N M5086/2-18-9.....	1

(1) ITEM NO.	(2) SMR CODE	(3) NSN	(4) CAGEC	(5) PART NUMBER	(6) DESCRIPTION AND USABLE ON CODE (UOC)	(7) QTY
77	AOOOO		94833	149K0021-32	.LEAD,ELECTRICAL.....	1
78	PAOZZ	5940-00-204-8966	56501	RA853	..TERMINAL,LUG.....	1
79	MOOZZ		94833	149K0021-32/3	..WIRE,ELECTRICAL, 12 IN LG, MAKE FROM WIRE,ELECTRICAL, P/N M5086/2-18-9.....	1
80	AOOOO		94833	149K0021-33	.LEAD,ELECTRICAL.....	1
81	PAOZZ	594-00-948-9686	00779	42599-2	TERMINAL,QUICK DISCONNECT	1
82	PAOZZ	5940-00-204-8966	56501	RA853	..TERMINAL,LUG.....	1
83	MOOZZ		94833	149K0021-33/3	..WIRE,ELECTRICAL, 24 IN LG, MAKE FROM WIRE,ELECTRICAL, P/N M5086/2-18-9.....	1
84	AOOOO		94833	149K0021-34	.LEAD,ELECTRICAL.....	1
85	PAOZZ	5940-00-948-9686	00779	42599-2	TERMINAL,QUICK DISCONNECT	2
86	MOOZZ		94833	149K0021-34/3	..WIRE,ELECTRICAL, 12 IN LG, MAKE FROM WIRE,ELECTRICAL, P/N M5086/2-18-9.....	1
87	AOOOO		94833	149K0021-35	.LEAD,ELECTRICAL.....	1
88	PAOZZ	5940-00-948-9686	00779	42599-2	TERMINAL,QUICK DISCONNECT	2
89	MOOZZ		94833	149K0021-35/3	..WIRE,ELECTRICAL, 3 IN LG, MAKE FROM WIRE,ELECTRICAL, P/N M5086/2-18-9.....	1
90	AOOOO		94833	149K0021-36	.LEAD,ELECTRICAL.....	1
91	PAOZZ	5940-00-143-4771	98410	AA-821-10	..TERMINAL,LUG.....	1
92	PAOZZ	5940-00-948-9686	00779	42599-2	TERMINAL,QUICK DISCONNECT	1
93	MOOZZ		94833	149K0021-36/3	..WIRE,ELECTRICAL, 24 IN LG, MAKE FROM WIRE,ELECTRICAL, P/N M5086/2-18-9.....	1
94	AOOOO		94833	149K0021-37	.LEAD,ELECTRICAL.....	1
95	PAOZZ	5940-00-948-9686	00779	42599-2	TERMINAL,QUICK DISCONNECT	1
96	PAOZZ	5940-00-204-8966	98410	AA-832-06	..TERMINAL,LUG.....	1
97	MOOZZ		94833	149K0021-37/3	..WIRE,ELECTRICAL, 12 IN LG, MAKE FROM WIRE,ELECTRICAL, P/N M5086/2-18-9.....	1
98	AOOOO		94833	149K0021-38	.LEAD,ELECTRICAL.....	1
99	PAOZZ	5940-00-948-9686	00779	42599-2	TERMINAL,QUICK DISCONNECT	1
100	PAOZZ	5940-00-204-8966	98410	AA-832-06	..TERMINAL,LUG.....	1
101	MOOZZ		94833	149K0021-38/3	..WIRE,ELECTRICAL, 12 IN LG, MAKE FROM WIRE,ELECTRICAL, P/N M5086/2-18-9.....	1
102	AOOOO		94833	149K0021-39	.LEAD,ELECTRICAL.....	1
103	PAOZZ	5940-00-204-8966	98410	AA-832-06	..TERMINAL,LUG.....	2
104	MOOZZ		94833	149K0021-39/3	..WIRE,ELECTRICAL, 24 IN LG,MAKE FROM WIRE,ELECTRICAL, P/N M5086/2-18-9.....	1
105	AOOOO		94833	149K0021-40	.LEAD,ELECTRICAL.....	1
106	PAOZZ	5940-00-620-9780	00779	42282-2	TERMINAL,QUICK DISCONNECT	1

(1) ITEM NO.	(2) SMR CODE	(3) NSN	(4) CAGEC	(5) PART NUMBER	(6) DESCRIPTION AND USABLE ON CODE (UOC)	(7) QTY
107	PAOZZ	5970-00-494-8285	00779	480054-3	..INSULATOR,HOUSING.....	1
108	PAOZZ	5940-00-204-8966	98410	AA-832-06	..TERMINAL,LUG.....	1
109	MOOZZ		94833	149K0021-40/3	..WIRE,ELECTRICAL, 120 IN LG, MAKE FROM WIRE,ELECTRICAL, P/N M5086/2-18-9.....	1
110	AOOOO		94833	149K0021-41	..LEAD,ELECTRICAL.....	1
111	PAOZZ	5940-00-620-9780	00779	42282-2	TERMINAL,QUICK DISCONNECT ..	1
112	PAOZZ	5970-00-494-8285	00779	480054-3	..INSULATOR,HOUSING.....	1
113	PAOZZ	5940-00-204-8966	96906	MS25036-102	..TERMINAL,LUG.....	1
114	MOOZZ		94833	149K0021-41/3	..WIRE,ELECTRICAL, 113 IN LG, MAKE FROM WIRE,ELECTRICAL, P/N M5086/2-18-9.....	1
115	AOOOO		94833	149K0021-42	..LEAD,ELECTRICAL.....	1
116	PAOZZ	5940-00-204-8966	98410	AA-832-06	..TERMINAL,LUG.....	2
117	MOOZZ		94833	149K0021-42/3	..WIRE,ELECTRICAL, 12 IN LG, MAKE FROM WIRE,ELECTRICAL, P/N M5086/2-18-9.....	1
118	AOOOO		94833	149K0021-43	..LEAD,ELECTRICAL.....	1
119	PAOZZ	5940-00-204-8966	96906	MS25036-102	..TERMINAL,LUG.....	2
120	MOOZZ		94833	149K0021-43/3	..WIRE,ELECTRICAL, 12 IN LG, MAKE FROM WIRE,ELECTRICAL, P/N M5086/2-18-9.....	1
121	AOOOO		94833	149K0021-44	..LEAD,ELECTRICAL.....	1
122	PAOZZ	5940-00-204-8966	96906	MS25036-102	..TERMINAL,LUG.....	1
123	PAOZZ	5940-00-143-4771	98410	AA-821-10	..TERMINAL,LUG.....	1
124	MOOZZ		94833	149K0021-44/3	..WIRE,ELECTRICAL , 12 IN LG, MAKE FROM WIRE,ELECTRICAL, P/N M5086/2-18-9.....	1
125	AOOOO		94833	149K0021-45	..LEAD,ELECTRICAL.....	1
126	PAOZZ	5940-00-620-9780	00779	42282-2	TERMINAL,QUICK DISCONNECT ..	1
127	PAOZZ	5970-00-494-8285	00779	480054-3	..INSULATOR,HOUSING.....	1
128	PAOZZ	5940-00-204-8966	96906	MS25036-102	..TERMINAL,LUG.....	1
129	MOOZZ		94833	149K0021-45/3	..WIRE,ELECTRICAL, 100 IN LG, MAKE FROM WIRE,ELECTRICAL, P/N M5086/2-18-9.....	1
130	AOOOO		94833	149K0021-46	..LEAD,ELECTRICAL.....	1
131	PAOZZ	5940-00-204-8966	96906	MS25036-102	..TERMINAL,LUG.....	2
132	MOOZZ		94833	149K0021-46/3	..WIRE,ELECTRICAL, 12 IN LG, MAKE FROM WIRE,ELECTRICAL, P/N M5086/2-18-9.....	1
133	AOOOO		94833	149K0021-47	..LEAD,ELECTRICAL.....	1
134	PAOZZ	5940-00-620-9780	00779	42282-2	TERMINAL,QUICK DISCONNECT ..	1
135	PAOZZ	5970-00-494-8285	00779	480054-3	..INSULATOR,HOUSING.....	1

(1) ITEM NO.	(2) SMR CODE	(3) NSN	(4) CAGEC	(5) PART NUMBER	(6) DESCRIPTION AND USABLE ON CODE (UOC)	(7) QTY
136	PAOZZ	5940-00-204-8966	96906	MS25036-102	..TERMINAL,LUG.....	1
137	MOOZZ		94833	149K0021-47/3	..WIRE,ELECTRICAL, 120 IN LG, MAKE FROM WIRE,ELECTRICAL, P/N M5086/2-18-9.....	1
138	AOOOO		94833	149K0021-48	..LEAD,ELECTRICAL.....	1
139	PAOZZ	5940-00-204-8966	96906	MS25036-102	..TERMINAL,LUG.....	2
140	MOOZZ		94833	149K0021-48/3	..WIRE,ELECTRICAL, 20 IN LG, MAKE FROM WIRE,ELECTRICAL, P/N M5086/2-18-9.....	1
141	AOOOO		94833	149K0021-49	..LEAD,ELECTRICAL.....	1
142	PAOZZ	5940-00-143-4794	98410	C-828-10	..TERMINAL,LUG.....	2
143	MOOZZ		94833	149K0021-49/1	..WIRE,ELECTRICAL, 12 IN LG, MAKE FROM WIRE,ELECTRICAL, P/N M5086/2-12-9.....	1
144	AOOOO		94833	149K0021-50	..LEAD,ELECTRICAL.....	1
145	PAOZZ	5940-00-557-1629	1W654	A-521-08	..TERMINAL,LUG.....	1
146	XDOZZ		1W654	B-972	..TERMINAL,FEMALE.....	1
147	MOOZZ		94833	149K0021-50/3	..WIRE,ELECTRICAL, 100 IN LG, MAKE FROM WIRE,ELECTRICAL, P/N M5086/2-18-9.....	1
148	AOOOO		94833	149K0021-51	..LEAD,ELECTRICAL.....	1
149	XDOZZ		1W654	B-972	..TERMINAL,FEMALE.....	2
150	MOOZZ		94833	149K0021-51/3	..WIRE,ELECTRICAL, 96 IN LG, MAKE FROM WIRE,ELECTRICAL, P/N M5086/2-18-9.....	1
151	AOOOO		94833	151K0042-1	..RESISTOR ASSEMBLY.....	1
152	PAOZZ	5940-00-557-1629	1W654	A-521-08	..TERMINAL,LUG.....	1
153	PAOZZ	5940-00-113-9828	98410	A-820-04	..TERMINAL,LUG.....	1
154	MOOZZ		94833	151K0042-1/4	..INSULATION,SLEEVING, 1.50 IN LG, MAKE FROM INSULATION,SLEEVING, P/N M23053/ 5-102-0.....	2
155	XDOZZ		12697	VC10F-5K	..RESISTOR,10W.....	1
156	AOOOO		94833	149K0021-52	..LEAD,ELECTRICAL.....	1
157	PAOZZ	5940-00-143-4794	98410	C-828-10	..TERMINAL,LUG.....	1
158	MOOZZ		94833	149K0021-52/1	..WIRE,ELECTRICAL, 36 IN LG, MAKE FROM WIRE,ELECTRICAL, P/N M5086/2-12-9.....	1
159	AOOOO		94833	149K0021-53	..LEAD,ELECTRICAL.....	1
160	PAOZZ	5940-00-143-4794	98410	C-828-10	..TERMINAL,LUG.....	1
161	MOOZZ		94833	149K0021-53/1	..WIRE,ELECTRICAL, 36 IN LG, MAKE FROM WIRE,ELECTRICAL, P/N M5086/2-12-9.....	1
162	AOOOO		94833	149K0021-54	..LEAD,ELECTRICAL.....	1

(1) ITEM NO.	(2) SMR CODE	(3) NSN	(4) CAGEC	(5) PART NUMBER	(6) DESCRIPTION AND USABLE ON CODE (UOC)	(7) QTY
163	PAOZZ	5940-00-143-4794	98410	C-828-10	..TERMINAL,LUG.....	1
164	MOOZZ		94833	149K0021-54/1	..WIRE,ELECTRICAL, 36 IN LG, MAKE FROM WIRE,ELECTRICAL, P/N M5086/2-12-9.....	1
165	AOOOO		94833	149K0021-55	..LEAD,ELECTRICAL.....	1
166	PAOZZ	5940-00-143-4794	98410	C-828-10	..TERMINAL,LUG.....	1
167	MOOZZ		94833	149K0021-55/1	..WIRE,ELECTRICAL, 36 IN LG, MAKE FROM WIRE,ELECTRICAL, P/N M5086/2-12-9.....	1
168	AOOOO		94833	149K0021-56	..LEAD,ELECTRICAL.....	1
169	PAOZZ	5940-00-204-8966	96906	MS25036-102	..TERMINAL,LUG.....	1
170	PAOZZ	5940-00-143-4794	98410	C-828-10	..TERMINAL,LUG.....	1
171	MOOZZ		94833	149K0021-56/1	..WIRE,ELECTRICAL, 36 IN LG, MAKE FROM WIRE,ELECTRICAL, P/N M5086/2-12-9.....	1
172	AOOOO		94833	149K0021-57	..LEAD,ELECTRICAL.....	1
173	PAOZZ	5940-00-204-8966	96906	MS25036-102	..TERMINAL,LUG.....	1
174	PAOZZ	5940-00-143-4777	98410	C830-14	..TERMINAL,LUG.....	1
175	MOOZZ		94833	149K0021-57/1	..WIRE,ELECTRICAL, 24 IN LG, MAKE FROM WIRE,ELECTRICAL, P/N M5086/2-12-9.....	1

THIS PAGE INTENTIONALLY LEFT BLANK

THIS PAGE INTENTIONALLY LEFT BLANK

UNIT, DIRECT SUPPORT AND GENERAL SUPPORT MAINTENANCE

REFRIGERATION UNIT, MECHANICAL, 5K BTU, ELECTRIC
MODEL F500RE

ELECTRICAL AND CONTROL
CONTROL BOX

REPAIR PARTS LIST

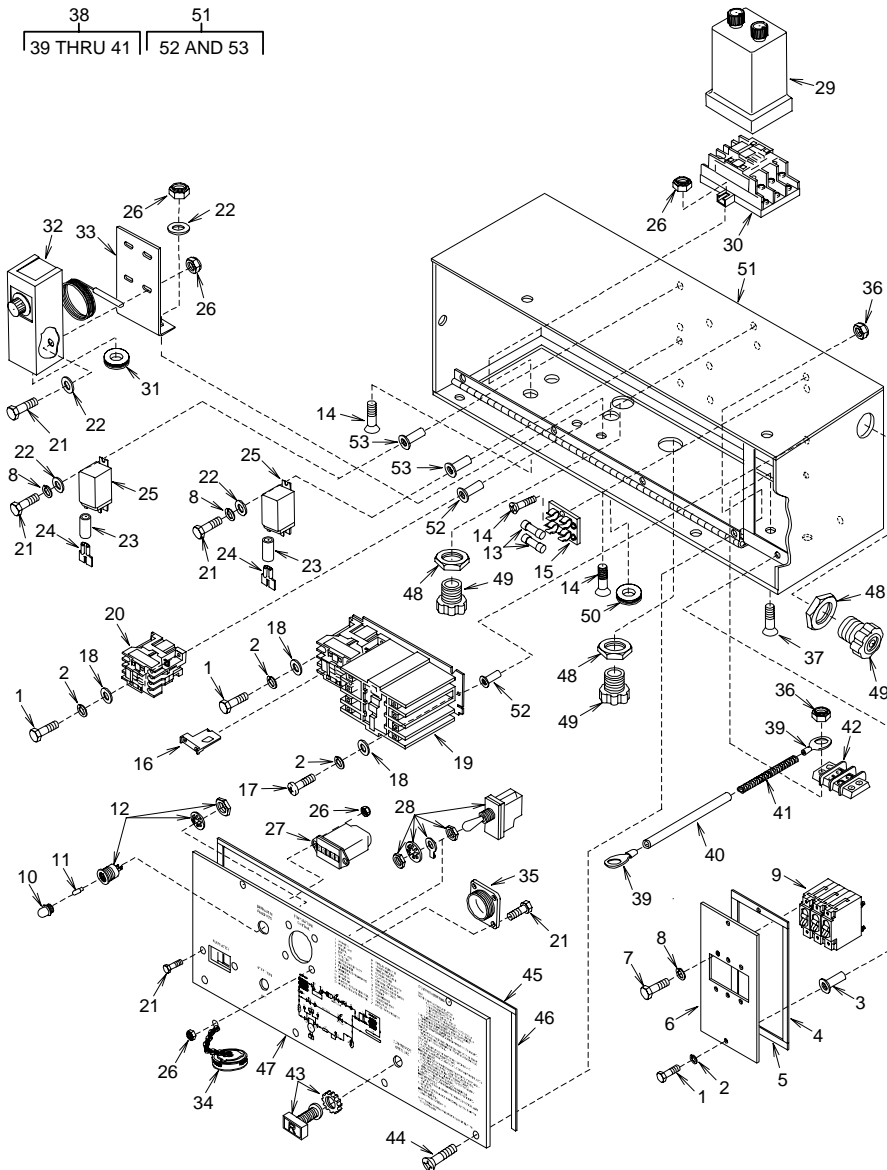


Figure 4. Control Box

(1) ITEM NO.	(2) SMR CODE	(3) NSN	(4) CAGEC	(5) PART NUMBER	(6) DESCRIPTION AND USABLE ON CODE (UOC)	(7) QTY
GROUP 02 ELECTRICAL AND CONTROL						
FIGURE 4 CONTROL BOX						
1	XDOZZ		94833	500K1928-19	.BOLT,HEX HEAD.....	7
2	XDOZZ		94833	500K1950-3	.WASHER,SPRING LOCK.....	8
3	PAOZZ	5310-01-167-2415	96906	MS27130-CR19K	NUT,PLAIN,BLIND RIVET	2
4	MOOZZ		94833	151K0030	.GASKET, CIRCUIT BREAKER PANEL, 0.125 X 0.050 X 5.875, MAKE FROM	
5	MOOZZ		94833	151K0031	.GASKET, CIRCUIT BREAKER PANEL, 0.125 X 0.750 X 3.250, MAKE FROM ASTM-D-1056-2A2C2F2.....	2
6	XDOZZ		94833	151K0018	.COVER,CIRCUIT BREAKER	1
7	XDOZZ		94833	500K1928-1	.BOLT,HEX HEAD.....	6
8	XDOZZ		94833	500K1950-1	.WASHER,SPRING LOCK.....	10
9	PAOZZ	5925-01-492-3308	94833	500K1914-3	.CIRCUIT BREAKER.....	1
10	PAOZZ	6210-01-098-3886	83330	125-1191-403	.LENS,LIGHT (RED).....	1
11	PAOZZ	6240-00-939-7859	92966	120MB	.LAMP,INCANDESCENT.....	1
12	PAOZZ	6210-00-840-0848	83330	125-0410-1132-403	.LIGHT,INDICATOR.....	1
13	PAOZZ	5920-00-548-3126	81349	F02A250V6A	.FUSE,CARTRIDGE.....	2
14	PAOZZ	5305-00-717-5593	96906	MS24693-C30	.SCREW,MACHINE.....	6
15	PAOZZ	5920-01-366-0796	71400	S-8301-2	.FUSEHOLDER,BLOCK.....	1
16	PAOZZ	5999-01-439-5294	0BWF3	500583PC9	HEATER,THERMAL RELEASE	3
17	XDOZZ		94833	53575-10-8	.SCREW,MACHINE.....	1
18	XDOZZ		94833	500K1926-3	.WASHER,FLAT.....	6
19	PAOZZ	6110-01-491-6177	27192	AN16BNOEC	.STARTER,MOTOR.....	1
20	PAOZZ	6110-01-484-4674	94833	152K0189-1	.CONTACTOR,MAGNETIC.....	1
21	XDOZZ		94833	500K1928-5	.BOLT,HEX HEAD.....	14
22	XBOZZ		94833	500K1926-1	.WASHER,FLAT.....	10
23	MFFZZ		94833	149K0009-1/50	.INSULATION,SLEEVING, 0.88 IN LG, MAKE FROM INSULATION,SLEEVING, P/N M23053/5-107-9	5
24	PAOZZ	5940-01-063-9908	00779	61045-2	TERMINAL,QUICK DISCONNECT	5
25	PAOZZ	5945-01-485-1175	94833	500K1904-1	.RELAY,ELECTROMAGNET.....	2
26	XDOZZ		94833	500K1927-1	.NUT,HEX,SELFLOCKING.....	14
27	PAOZZ	6645-01-477-5316	74400	20007	METER,TIME TOTALIZING	1
28	PAOZZ	5930-00-683-1628	96906	MS24523-22	.SWITCH,TOGGLE.....	1
29	PAOZZ	6645-01-484-9671	1HM04	TDF-220-AKB-24H	.TIMER,SEQUENTIAL.....	1
30	PAOZZ	5935-01-484-7746	51107	QC-11	SOCKET,PLUG-IN ELECTRONIC COMPONENT.....	1
31	PAOZZ	5325-00-834-1789	96906	MS35489-118	.GROMMET,NONMETALLIC.....	1
32	PAOZZ	6685-01-491-3877	50831	A19AAD-25D	.CONTROL,TEMPERATURE INDICATING.....	1

(1) ITEM NO.	(2) SMR CODE	(3) NSN	(4) CAGEC	(5) PART NUMBER	(6) DESCRIPTION AND USABLE ON CODE (UOC)	(7) QTY
33	XDOZZ		94833	151K0020	.BRACKET,TEMPERATURE CONTROL SWITCH	1
34	PAOZZ	5935-01-175-8417	96906	MS25043-24DA	COVER,ELECTRICAL CONNECTOR	1
35	XDOZZ		94833	150K0183	.DUMMY STOWAGE CONNECTOR	1
36	XDOZZ		94833	500K1927-2	.NUT,HEX,SELF-LOCKING.....	6
37	PAOZZ	5305-00-088-9670	96906	MS24693-C53	.SCREW,MACHINE.....	2
38	XDOOO		94833	150K0201-1	.STRAP,GROUND.....	1
39	PAOZZ	5940-00-114-1316	96906	MS20659-130	..TERMINAL,LUG.....	2
40	MOOZZ		94833	150K0201-1/3	.INSULATION,SLEEVING, 4.0 IN LG, MAKE FROM INSULATION,SLEEVING, P/N M23053/5-107-0.....	1
41	MOOZZ		94833	150K0201-1/1	..BRAID,WIRE,TUBULAR, 4 IN LG, MAKE FROM BRAID,TUBULAR, P/N QQ-B-575R30T281.....	1
42	PAOZZ	5940-00-983-6122	81349	39TB2	.TERMINAL BOARD.....	1
43	PAOZZ	5930-01-491-6595	94833	151K0041-1	.PUSH BUTTON.....	1
44	PAOZZ	5305-00-066-7327	96906	MS24693-C28	.SCREW,MACHINE.....	4
45	MOOZZ		94833	149K0032	.GASKET,CONTROL BOX, TOP, 0.125 X 0.50 X 6.8437, MAKE FROM RUBBER GASKET, P/N ASTM-D-1056-2A2C2F2. ...	1
46	MOOZZ		94833	150K0096	.GASKET,CONTROL BOX, SIDE,MAKE FROM RUBBER GASKET,ASTM-D-1056-2A2C2F2, 1/8 X 1/2 X 6-27/32...	2
47	PAOZZ	9905-01-493-8107	94833	149K0010-1	.PLATE,INSTRUCTION/OPERATING	1
48	PAOZZ	5975-00-642-7261	56501	142	.LOCKNUT,ELECTRICAL.....	3
49	PAOZZ	5975-00-539-6912	59730	2535	.BOX CONNECTOR,ELECTRICAL.....	3
50	PAOZZ	5325-00-174-5316	96906	MS35489-2	.GROMMET,NONMETALLIC.....	1
51	XBOOO		94833	149K0017-1	.CONTROL BOX.....	1
52	PAOZZ	5310-01-167-2415	96906	MS27130-CR19K	NUT,PLAIN,BLIND RIVET	5
53	PAOZZ	5310-00-121-8009	80205	NAS1329C06K	NUT,PLAIN,BLIND RIVET	6

END OF FIGURE

THIS PAGE INTENTIONALLY LEFT BLANK

UNIT, DIRECT SUPPORT AND GENERAL SUPPORT MAINTENANCE

REFRIGERATION UNIT, MECHANICAL, 5K BTU, ELECTRIC
MODEL F5000RE

ELECTRICAL AND CONTROL
SWITCHES AND ELECTRICAL ENCLOSURE ASSEMBLY

REPAIR PARTS LIST

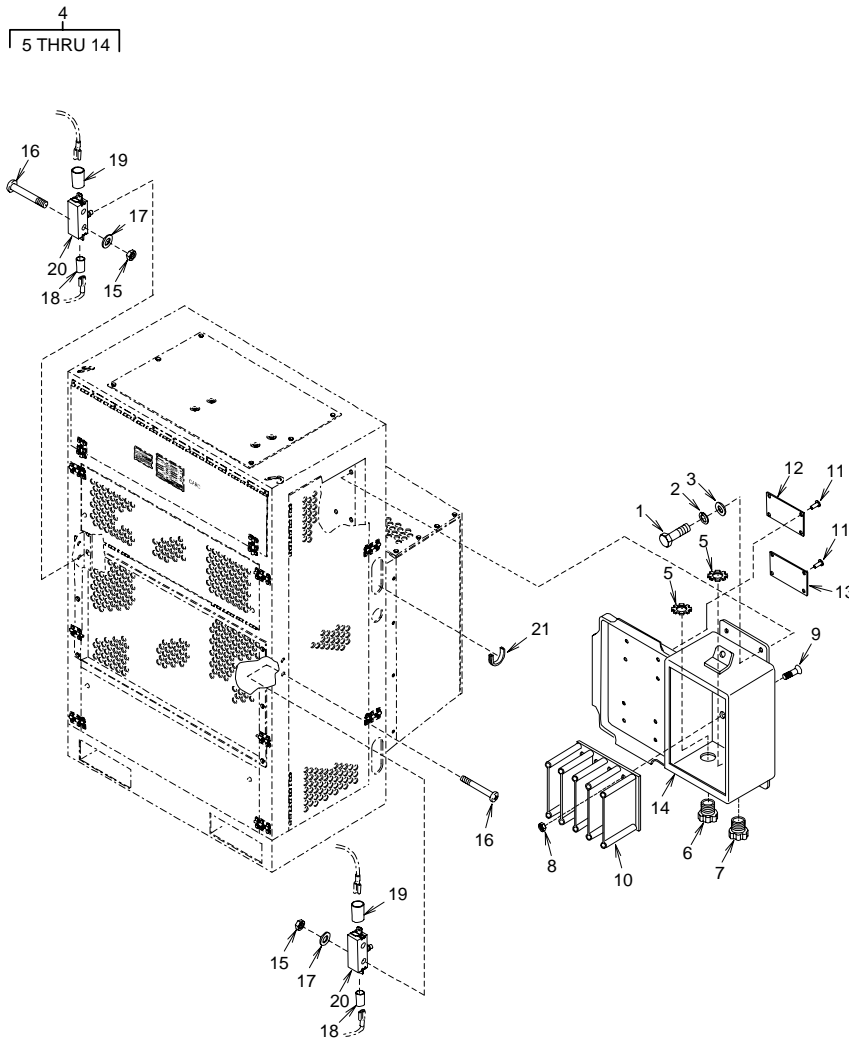


Figure 5. Switches and Electrical Enclosure Assembly

(1) ITEM NO.	(2) SMR CODE	(3) NSN	(4) CAGEC	(5) PART NUMBER	(6) DESCRIPTION AND USABLE ON CODE (UOC)	(7) QTY
GROUP 02 ELECTRICAL AND CONTROL						
FIGURE 5 SWITCHES AND ELECTRICAL ENCLOSURE ASSEMBLY						
1	XDOZZ		94833	500K1928-28	BOLT,HEX HEAD.....	4
2	XDOZZ		94833	500K1950-4	WASHER,SPRING LOCK.....	4
3	XDOZZ		94833	500K1926-4	WASHER,FLAT.....	4
4	XDOOO		94833	149K0018-1	ENCLOSURE ASSEMBLY.....	1
5	PAOZZ	5975-00-642-7261	56501	142	.LOCKNUT,ELECTRICAL.....	2
6	PAOZZ	5975-00-539-6912	59730	2535	.BOX CONNECTOR,ELECTRICAL.....	1
7	PAOZZ	5975-00-284-6335	15235	CGB294	BOX CONNECTOR,ELECTRICAL.....	1
8	XDOZZ		94833	500K1927-2	.NUT,HEX,SELFLOCKING.....	4
9	PAOZZ	5305-00-889-2991	96906	MS24693-C48	.SCREW,MACHINE.....	4
10	PAOZZ	5940-01-491-8499	21574	62104	.TERMINAL BLOCK,ELECTRICAL	1
11	PAOZZ	5320-00-903-6767	96906	MS24662-5	.RIVET,BLIND.....	8
12	PAOZZ	9905-01-493-8749	94833	120K1504-1	.PLATE,INSTRUCTION/OPERATION	1
13	PAOZZ	9905-01-493-8748	94833	120K1504-3	.PLATE,INSTRUCTION/OPERATION	1
14	XDOZZ		94833	149K0020-1	.ENCLOSURE.....	1
15	XDOZZ		94833	500K1927-1	.NUT,HEX,SELF-LOCKING.....	4
16	XDOZZ		94833	53575-6-20	.SCREW,PAN HD.....	4
17	XDOZZ		94833	500K1926-1	.WASHER,FLAT.....	4
18	MOOZZ		94833	149K0000-1/141	INSULATION,SLEEVING, 1.50 IN LG, MAKE FROM INSULATION,SLEEVING, P/N M23053/5-106-9.....	2
19	MOOZZ		94833	149K0000-1/178	INSULATION,SLEEVING, 1.50 IN LG, MAKE FROM INSULATION,SLEEVING, P/N M23053/5-107-9.....	2
20	PAOZZ	5930-00-126-3132	01963	E13-00M	SWITCH,SENSITIVE.....	2
21	MOOZZ		94833	500K1662-3-3.36	GROMMET,CATERPILLAR, 3.36 IN LG.....	1

END OF FIGURE

THIS PAGE INTENTIONALLY LEFT BLANK

THIS PAGE INTENTIONALLY LEFT BLANK

UNIT, DIRECT SUPPORT AND GENERAL SUPPORT MAINTENANCE

REFRIGERATION UNIT, MECHANICAL, 5K BTU, ELECTRIC
MODEL F500RE

POWER TRANSMISSION AND AIR HANDLING

REPAIR PARTS LIST

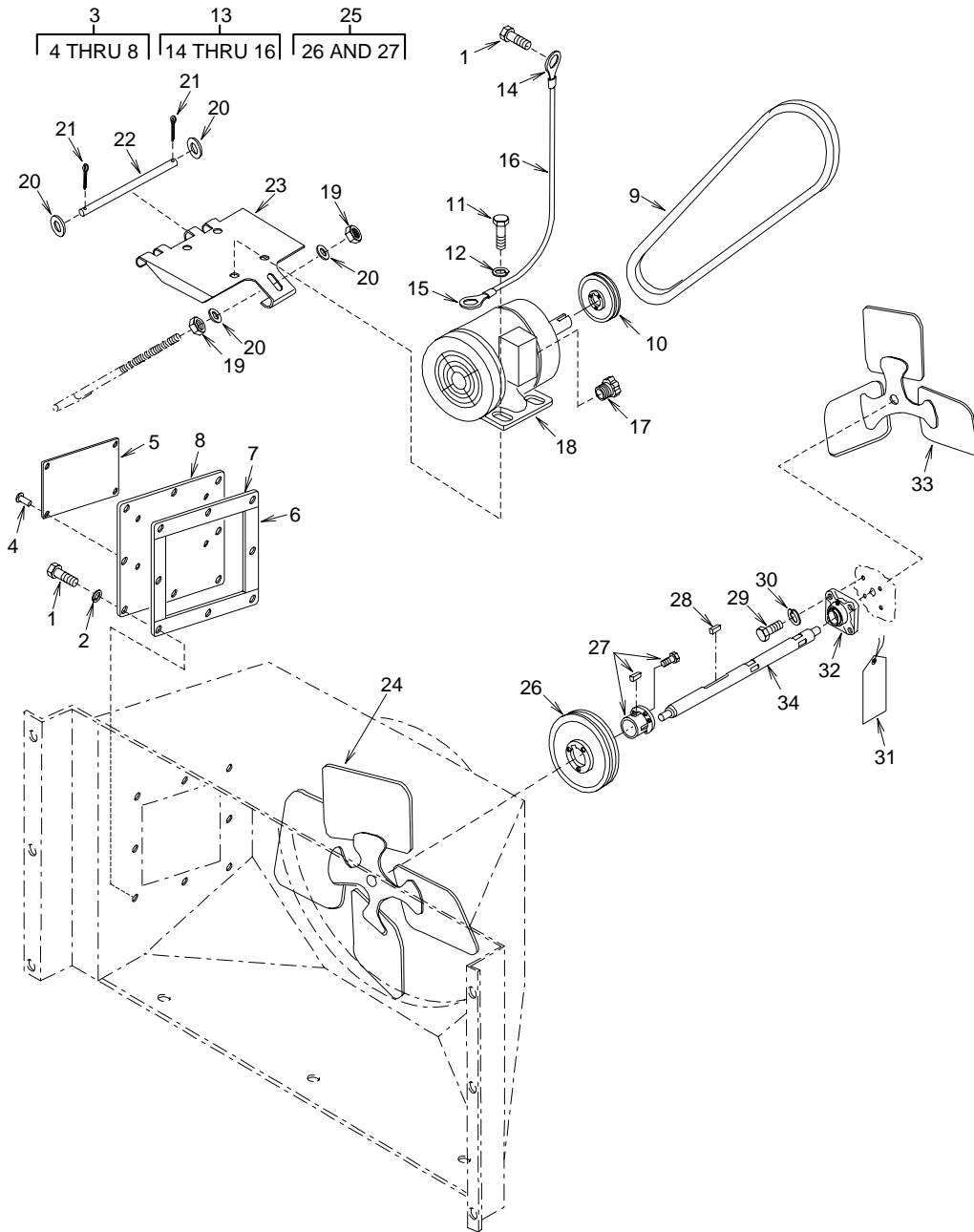


Figure 6. Power Transmission and Air Handling

(1) ITEM NO.	(2) SMR CODE	(3) NSN	(4) CAGEC	(5) PART NUMBER	(6) DESCRIPTION AND USABLE ON CODE (UOC)	(7) QTY
					GROUP 03 POWER TRANSMISSION AND AIR HANDLING	
					FIGURE 6 POWER TRANSMISSION AND AIR HANDLING	
1	XDOZZ		94833	500K1928-21	BOLT,HEX HEAD.....	9
2	XDOZZ		94833	500K1950-3	WASHER,SPRING LOCK.....	8
3	XDOOO		94833	148K0239-1	PLATE ASSEMBLY,BELT ACCESS	1
4	XDOZZ		94833	500K2031-139	.RIVET,STRUCTURAL.....	4
5	PAOZZ	9905-01-484-7604	94833	500K1948	.PLATE,INSTRUCTION.....	1
6	MOOZZ		94833	148K0239-1/3	.GASKET 0.125 X 0.500 X 4.875, MAKE FROM GASKET, P/N ASTM-D-1056-2A2C2F2.....	2
7	MOOZZ		94833	148K0239-1/4	.GASKET 0.125 X 0.500 X 6.500, MAKE FROM GASKET, P/N ASTM-D-1056-2A2C2F2.....	2
8	PAOZZ	5340-01-492-4354	94833	148K0238-1	.COVER,ACCESS.....	1
9	PAOZZ	3030-01-442-6447	71176	A40	BELT,V.....	1
10	PAOZZ	3020-01-485-0024	71176	BK34	PULLEY,GROOVE, 0.625 BORE.....	1
11	XDOZZ		94833	500K1928-44	BOLT,HEX HEAD.....	4
12	XDOZZ		94833	500K1950-5	WASHER,SPRING LOCK.....	4
13	XDOOO		94833	152K0183-3	STRAP,GROUND.....	1
14	PAOZZ	5940-00-114-1316	96906	MS20659-130	.TERMINAL,LUG.....	1
15	PAOZZ	5940-00-115-2676	96906	MS20659-143	.TERMINAL,LUG.....	1
16	MOOZZ		94833	152K0183-3/1	.BRAID,WIRE,TUBULAR, 16 IN LG, MAKE FROM BRAID TUBULAR, P/N QQ-B-575R30T375.....	1
17	PAOZZ	5975-00-152-1144	59730	3302M	BOX CONNECTOR,ELECTRICAL	1
18	PAOZA	6105-01-491-7662	94833	500K1861-1	MOTOR,ALTERNATING CURRENT	1
19	XDOZZ		94833	500K1927-6	NUT,HEX,SELFLOCKING.....	2
20	XDOZZ		94833	500K1926-6	WASHER,FLAT.....	4
21	PAOZZ	5315-00-839-5821	29215	JD1494	PIN,COTTER.....	2
22	XDOZZ		94833	152K0100	HINGE PIN,MOTOR MOUNT	1
23	XDOZZ		94833	152K0133-1	PLATE ASSEMBLY, TOP, MOTOR MOUNT ..	1
24	PAOZZ	4140-01-492-0968	6G317	SNL1627-4, I-CW	IMPELLER,FAN,CENTRIFICAL	1
25	PAOZZ	3020-01-485-0468	94833	500K1955	PULLEY,GROOVE.....	1
26	XAOZZ		71176	ITA44	.SHEAVE,TWO GROOVE.....	1
27	XAOZZ		71176	P1	.BUSHING,SPLIT TAPER.....	1
28	PAOZZ	5315-00-995-0569	96906	MS20066-213	KEY,MACHINE.....	1
29	XDOZZ		94833	500K1928-30	BOLT,HEX HEAD.....	4
30	XDOZZ		94833	500K1950-6	WASHER,SPRING LOCK.....	4
31	XDOZZ		94833	149K0056	TAG,LUBRICATION.....	1
32	PAOZZ	3130-01-485-1737	94833	500K1866	BEARING UNIT,BALL.....	2
33	PAOZZ	4140-01-492-1602	6G317	SNL1616-3,I-CW	IMPELLER,FAN,CENTRIFICAL ...	1
34	PAOZZ	3040-01-491-9273	94833	148K0022-1	SHAFT,STRAIGHT.....	1

END OF FIGURE

THIS PAGE INTENTIONALLY LEFT BLANK

THIS PAGE INTENTIONALLY LEFT BLANK

UNIT, DIRECT SUPPORT AND GENERAL SUPPORT MAINTENANCE

REFRIGERATION UNIT, MECHANICAL, 5K BTU, ELECTRIC
MODEL F500RE

REFRIGERATION SYSTEM
REFRIGERANT PIPING, CONDENSER SECTION

REPAIR PARTS LIST

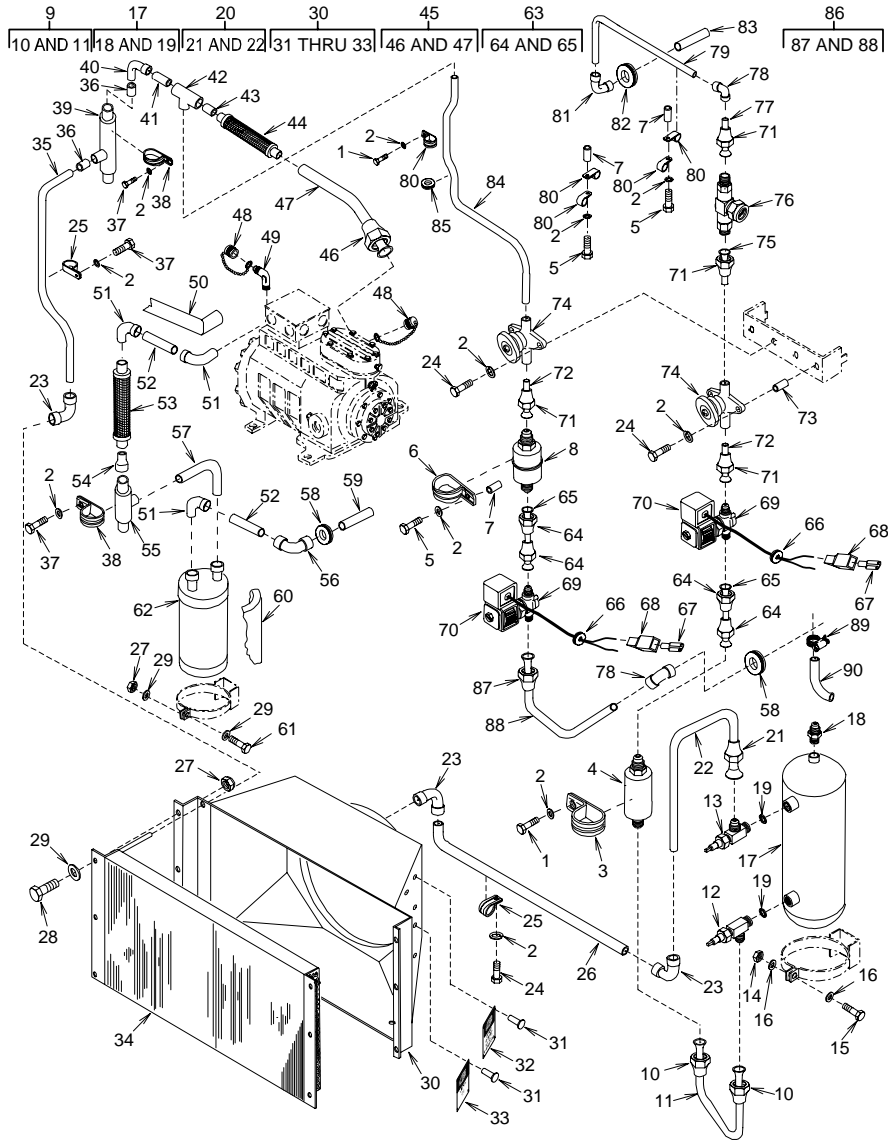


Figure 7. Refrigerant Piping, Condenser Section

(1) ITEM NO.	(2) SMR CODE	(3) NSN	(4) CAGEC	(5) PART NUMBER	(6) DESCRIPTION AND USABLE ON CODE (UOC)	(7) QTY
GROUP 04 REFRIGERATION SYSTEM						
FIGURE 7 REFRIGERANT PIPING, CONDENSER SECTION						
1	XDFZZ		94833	500K1928-21	BOLT,HEX HEAD.....	2
2	XDFZZ		94833	500K1950-3	WASHER,SPRING LOCK.....	17
3	PAFZZ	5340-00-584-6560	96906	MS21919WDG48	CLAMP,LOOP.....	1
4	PAFZZ	4130-00-226-1578	96906	MS35845-2	FILTER-DRIER,REFRIGERANT.....	1
5	XDFZZ		94833	500K1928-25	BOLT,HEX HEAD.....	3
6	PAFZZ	5340-00-579-9678	96906	MS21919WDG32	CLAMP,LOOP.....	1
7	XDFZZ		97403	13211E8376-8	SPACER.....	3
8	PAFZZ	4730-01-485-0721	97765	FC 6	STRAINER,SEDIMENT.....	1
9	XDFFF		94833	149K0053-1	TUBE ASSEMBLY,OUTLET RECEIVER ...	1
10	PAFZZ	4730-00-189-2739	93061	14FSX-6	.NUT,TUBE COUPLING.....	2
11	MFFZZ		94833	149K0053-1/T	.TUBE,COPPER, 0.375 OD X 0.030 WALL, 14.63 IN LG, MAKE FROM COPPER TUBING, P/N ASTM-B280.....	1
12	PAFZA	4820-01-492-3321	97765	27742	VALVE,FLOW CONTROL, 0.38 FLARE..	1
13	PAFZZ	4820-01-485-0527	97765	27036	VALVE,FLOW CONTROL, 0.63 FLARE..	1
14	XDFZZ		94833	500K1927-5	NUT,HEX,SELF-LOCKING.....	2
15	XDFZZ		94833	500K1928-46	BOLT,HEX HEAD.....	1
16	XDFZZ		94833	500K1926-5	WASHER,FLAT.....	2
17	XDFZZ		97765	3391	RECEIVER.....	1
18	PAFZZ	5340-01-485-0689	97765	983-430	.PLUG,FUSIBLE.....	1
19	PAFZZ	5330-01-333-8101	97765	24591	.GASKET.....	2
20	XDFFF		94833	149K0052-1	TUBE ASSEMBLY,INLET RECEIVER	1
21	PAFZZ	4730-00-228-0826	81343	J5138-010166BA	.NUT,TUBE COUPLING.....	1
22	MFFZZ		94833	149K0052-1/T	.TUBE,COPPER, 0.625 OD X 0.035 WALL, 24.85 IN LG, MAKE FROM COPPER TUBING, P/N ASTM-B280.....	1
23	PAFZZ	47300-0-818-5190	41947	W2722	ELBOW,TUBE.....	3
24	XDFZZ		94833	500K1928-22	BOLT,HEX HEAD.....	9
25	PAFZZ	5340-00-584-6556	96906	MS21919WDG-10	CLAMP,LOOP.....	6
26	MFFZZ		94833	149K0075	TUBE,COPPER, 0.625 OD X 0.035 WALL, 27.49 IN LG, MAKE FROM COPPER TUBING, P/N ASTM-B280.....	1
27	XDFZZ		94833	500K1927-4	NUT,HEX,SELF-LOCKING.....	7
28	XDFZZ		94833	500K1928-31	BOLT,HEX HEAD.....	6
29	XBFZZ		94833	500K1926-4	WASHER,FLAT.....	7
30	XDFZZ		94833	148K0024-1	SHROUD,CONDENSER FAN	1
31	XDFZZ		94833	500K2031-139	.RIVET,STRUCTURAL.....	12

(1) ITEM NO.	(2) SMR CODE	(3) NSN	(4) CAGEC	(5) PART NUMBER	(6) DESCRIPTION AND USABLE ON CODE (UOC)	(7) QTY
32	PAFZZ	9905-01-484-3216	94833	500K1947	PLATE,IDENTIFICATION	2
33	PAOZZ	9905-01-484-7604	94833	500K1948	.PLATE,INSTRUCTION.....	1
34	PAFZZ	4130-01-491-4280	94833	500K1849-5	CONDENSER COIL,REFRIGERATION	1
35	MFFZZ		94833	149K0061	TUBE,OUTLET,DISCHARGE REG. VALVE, 0.625 OD X 0.035 WALL, 17.73 IN LG, MAKE FROM COPPER TUBING, P/N ASTM-B280.....	1
36	PAFZZ	4730-00-021-4173	41947	W1739	REDUCER,TUBE.....	2
37	XDFZZ		94833	500K1928-19	BOLT,HEX HEAD.....	3
38	PAFZZ	5340-00-664-0584	96906	MS21919WDG30	CLAMP,LOOP.....	2
39	PAFZZ	4820-01-492-0295	78462	ORI-10-65/225- H- 1 1/8 ODF	VALVE,REGULATING,FLUID (DISCHARGE).....	1
40	PAFZZ	4730-00-254-6211	30327	E14A	ELBOW,PIPE TO TUBE.....	1
41	MFFZZ		94833	12075-7-2375	TUBE,COPPER, 0.625 OD X 0.035 WALL, 2.38 IN LG,MAKE FROM COPPER TUBING, P/N ASTM-B280.....	1
42	PAFZZ	4730-00-263-6470	41947	W4008	TEE,TUBE, SOLDER X SOLDER X SOLDER.....	1
43	MFFZZ		94833	12075-7-1500	TUBE,COPPER, 0.625 OD X 0.035 WALL, 1.50 IN LG, MAKE FROM COPPER TUBING, P/N ASTM-B280.....	1
44	PAFZZ	5340-01-471-4305	70510	1212FY	MOUNT,RESILIENT, GENERAL PURPOSE.....	1
45	XDFFF		94833	149K0059-1	TUBE ASSEMBLY,OUTLET.....	1
46	PAFZZ	4730-00-189-2742	96906	MS35872-5	.NUT,TUBE COUPLING.....	1
47	MFFZZ		94833	149K0059-1/T	.TUBE,COPPER, OUTLET, COMPRESSOR, 0.625 OD X 0.035 WALL,5.63 IN LG, MAKE FROM COPPER TUBING, P/N ASTM-B280.....	1
48	PAFZZ	4730-01-092-3835	07295	40570	CAP,TUBE.....	2
49	PAFZZ	4730-00-254-6211	30327	E14A	ELBOW,PIPE TO TUBE.....	1
50	MFFZZ		94833	149K0000-1/99	INSULATION TUBE, 0.875 ID X 0.50 WALL, 80.00 IN LG, MAKE FROM INSULATION, P/N MIL-P-15280 FORM T ..	1
51	PAFZZ	4730-00-690-0120	41947	W2834	ELBOW,TUBE.....	3
51	PAFZZ	4730-00-690-0120	41947	W2834	ELBOW,TUBE.....	3
52	MFFZZ		94833	12075-9-2875	TUBE,COPPER, 0.875 OD X 0.045 WALL, 2.88 IN LG, MAKE FROM COPPER TUBING, P/N ASTM-B280.....	2
53	PAFZZ	4720-00-116-7493	02795	12MBS-4141B- 111/ 2IN	HOSE ASSEMBLY,METAL.....	1

(1) ITEM NO.	(2) SMR CODE	(3) NSN	(4) CAGEC	(5) PART NUMBER	(6) DESCRIPTION AND USABLE ON CODE (UOC)	(7) QTY
54	MFFZZ		94833	149K0058	TUBE,COPPER, OUTLET, CRANKCASE REG VALVE, 0.875 OD X 0.045 WALL, 5.00 IN LG, MAKE FROM COPPER TUBING, P/N ASTM-B280	1
55	PAFZZ	4820-01-492-2995	94833	500K1854-1	VALVE,REGULATING,FLUID	1
56	PAFZZ	4730-00-625-6215	41947	W2734	ELBOW,TUBE.....	1
57	MFFZZ		94833	149K0057	TUBE,COPPER, OUTLET,ACCUMULATOR, 0.875 OD X 0.045 WALL,5.52 IN LG, MAKE FROM COPPER TUBING, P/N ASTM-B280.....	1
58	PAFZZ	5325-00-276-6080	76385	Z-208	GROMMET,NONMETALLIC.....	2
59	MFFZZ		94833	12075-9-9500	TUBE,COPPER, 0.875 OD X 0.045 WALL, 9.50 IN LG, MAKE FROM COPPER TUBING, P/N ASTM-B280.....	2
60	MFFZZ		94833	149K0000/162	INSULATION,SOUND AND TEMPERATURE, 3.0 SQ FT, MAKE FROM INSULATION, P/N (97403)13225E8562	1
61	XDFZZ		94833	500K1928-35	BOLT,HEX HEAD.....	1
62	XDFZZ		97765	3738	ACCUMULATOR.....	1
63	XDFFF		94833	149K0063-1	TUBE ASSEMBLY, OUTLET, DEHYDRATOR.....	2
64	PAFZZ	4730-00-189-2739	93061	14FSX-6	.NUT,TUBE COUPLING.....	2
65	MFFZZ		94833	149K0063-1/T	.TUBE,COPPER, 0.375 OD X 0.030 WALL, 2.19 IN LG, MAKE FROM COPPER TUBING, P/N ASTM-B280.....	1
66	PAFZZ	5325-01-242-7083	96906	MS35489-17	GROMMET,NONMETALLIC.....	2
67	PAOZZ	5940-01-091-2560	00779	42565-2	TERMINAL.....	4
68	PAOZZ	5970-00-494-8284	00779	480053-3	INSULATOR,HOUSING.....	4
69	PAFZZ	4810-01-147-6802	78462	B9F2	VALVE,SOLENOID.....	2
70	PAFZZ	4810-00-928-8927	78462	MKC2	.PARTS KIT,SOLENOID, (COIL ASSY, W/JUNCTION BOX, INSTRUCTIONS).....	2
71	PAFZZ	4730-00-189-2739	93061	14FSX-6	NUT,TUBE COUPLING.....	4
72	MFFZZ		94833	12076-5-2125	TUBE,COPPER, 0.375 OD X 0.032 WALL, 2.13 IN LG, MAKE FROM COPPER TUBING, P/N ASTM-B280.....	2
73	XDFZZ		94833	149K0055-1	SPACER.....	2
74	PAFZZ	4820-00-287-3325	28193	6263N	VALVE,GLOBE.....	2
75	MFFZZ		94833	12076-5-2500	TUBE,COPPER, 0.375 OD X 0.032 WALL, 2.50 IN LG, MAKE FROM COPPER TUBING, P/N ASTM-B280.....	1
76	PAFZZ	6680-00-426-8643	70255	AMI1MM3	INDICATOR,SIGHT,LIQUID	1
77	MFFZZ		94833	12076-5-938	TUBE,COPPER, 0.375 OD X 0.032 WALL, 0.94 IN LG, MAKE FROM COPPER TUBING, P/N ASTM-B280.....	1
78	PAFZZ	4730-01-397-1195	41947	W-2009	ELBOW,TUBE.....	2

(1) ITEM NO.	(2) SMR CODE	(3) NSN	(4) CAGEC	(5) PART NUMBER	(6) DESCRIPTION AND USABLE ON CODE (UOC)	(7) QTY
79	MFFZZ		94833	149K0074	TUBE,COPPER, 0.375 OD X 0.030 WALL, 17.22 IN LG, MAKE FROM COPPER TUBING, P/N ASTM-B280.....	2
80	PAFZZ	5340-01-148-3722	96906	MS21919WCG6	CLAMP,LOOP.....	5
81	PAFZZ	4730-00-471-5663	41947	W2716	ELBOW,TUBE.....	1
82	PAFZZ	5325-00-185-0004	96906	MS35489-40	GROMMET,NONMETALLIC.....	1
83	MFFZZ		94833	12076-5-9375	TUBE,COPPER, 0.375 OD X 0.032 WALL, 9.38 IN LG, MAKE FROM COPPER TUBING, P/N ASTM-B280.....	1
84	MFFZZ		94833	149K0065	TUBE,COPPER, INLET,SHUT-OFF VALVE, 0.375 OD X 0.030 WALL, 36.81 IN LG, MAKE FROM COPPER TUBING, P/N ASTM-B280.....	1
85	PAFZZ	5325-00-249-6345	96906	MS35489-69	GROMMET,NONMETALLIC.....	1
86	XDFFF		94833	149K0064-1	TUBE ASSEMBLY OUTLET,SOLENOID VALVE.....	1
87	PAFZZ	4730-00-189-2739	93061	14FSX-6	.NUT,TUBE COUPLING.....	1
88	MFFZZ		94833	149K0064-1/T	.TUBE,COPPER, 0.375 OD X 0.030 WALL, 7.73 IN LG, MAKE FROM COPPER TUBING, P/N ASTM-B280.....	1
89	PAFZZ	4730-00-908-3195	91343	SAE J1508-06	CLAMP,HOSE.....	1
90	XDFZZ		94833	54090-9-8750	TUBING,TYGON.....	1

END OF FIGURE

THIS PAGE INTENTIONALLY LEFT BLANK

UNIT, DIRECT SUPPORT AND GENERAL SUPPORT MAINTENANCE

REFRIGERATION UNIT, MECHANICAL, 5K BTU, ELECTRIC
MODEL F5000RE

REFRIGERATION SYSTEM
PRESSURE SWITCHES

REPAIR PARTS LIST

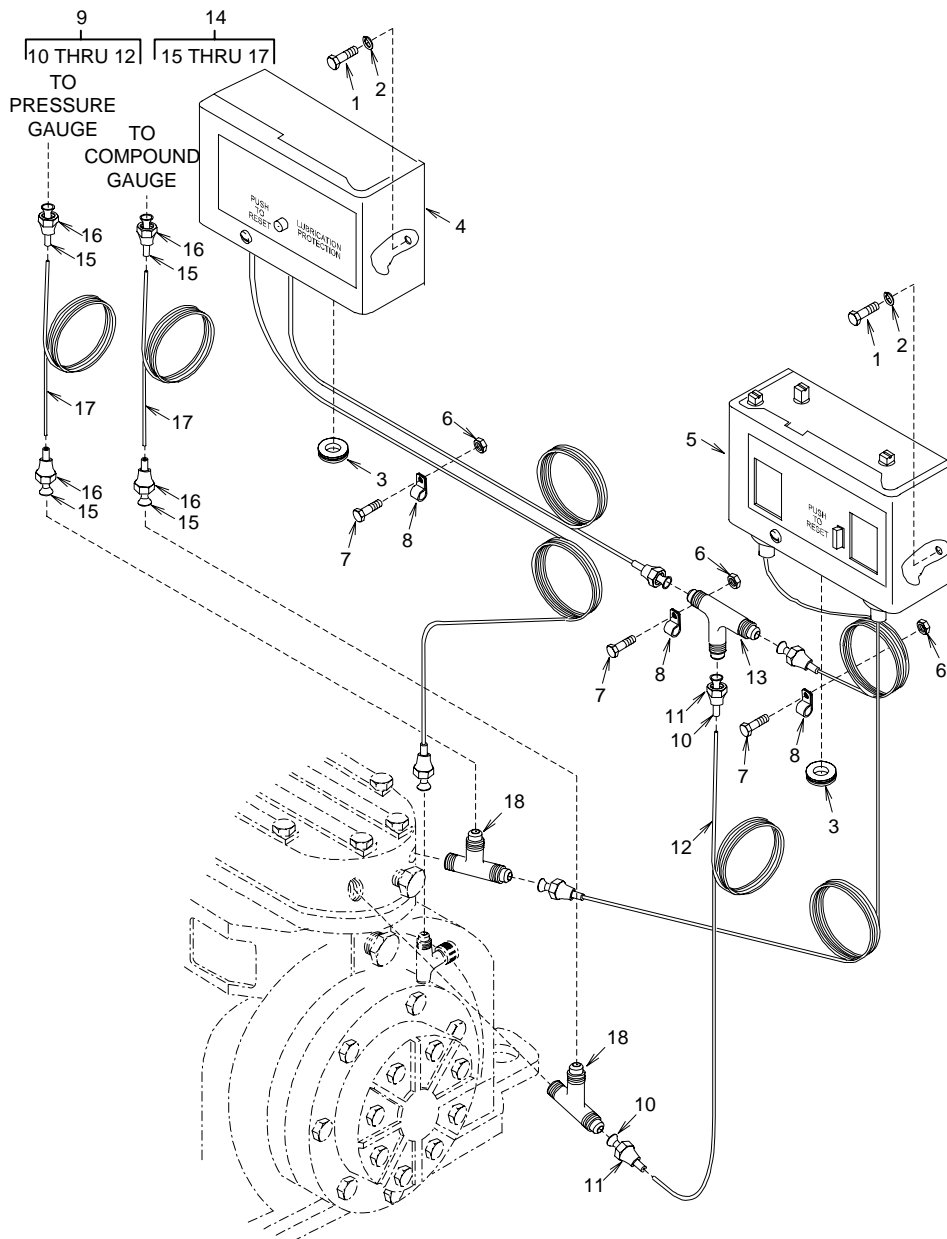


Figure 8. Pressure Switches

(1) ITEM NO.	(2) SMR CODE	(3) NSN	(4) CAGEC	(5) PART NUMBER	(6) DESCRIPTION AND USABLE ON CODE (UOC)	(7) QTY
GROUP 04 REFRIGERATION SYSTEM						
FIGURE 8 PRESSURE SWITCHES						
1	XBFZZ		94833	500K1928-19	BOLT,HEX HEAD.....	4
2	XDFZZ		94833	500K1950-3	WASHER,SPRING LOCK.....	4
3	PAFZZ	5325-00-913-2606	96906	MS35489-124	GROMMET,NONMETALLIC.....	2
4	PAFZZ	4130-00-814-0450	50831	P45NCA-12	CONTROL,LUBE OIL.....	1
5	PAFZZ	5930-01-430-8645	0AUH7	P70MA1C	SWITCH,PRESSURE	1
6	XDFZZ		94833	500K1927-3	NUT,HEX,SELF-LOCKING.....	3
7	XDFZZ		94833	500K1928-22	BOLT,HEX HEAD.....	3
8	PAFZZ	5340-00-291-5323	96906	MS21919WDG4	CLAMP,LOOP.....	2
9	XDFFF		94833	149K0051-1	TUBE ASSEMBLY, CAPILLARY.....	1
10	MFFZZ		94833	12076-3-1000	.TUBE,COPPER, 0.250 OD X 0.030 WALL, 1.00 IN LG, MAKE FROM COPPER TUBING, P/N ASTM-B280.....	2
11	PAFZZ	4730-00-189-2737	41947	A5051	.NUT,TUBE COUPLING.....	2
12	MFFZZ		94833	149K0051-1/3	.TUBE,COPPER, 0.125 OD X 0.030 WALL, 0.00 IN LG, MAKE FROM COPPER TUBING, P/N ASTM-B280.....	1
13	PAFZZ	4730-01-397-1193	41947	A-340	TEE,TUBE.....	1
14	XDFFF		94833	149K0051-3	TUBE ASSEMBLY CAPILLARY	2
15	MFFZZ		94833	12076-3-1000	.TUBE,COPPER, 0.250 OD X 0.030 WALL, 1.00 IN LG, MAKE FROM COPPER TUBING, P/N ASTM-B280.....	4
16	PAFZZ	4730-00-189-2737	41947	A5051	.NUT,TUBE COUPLING.....	4
17	MFFZZ		94833	149K0051-3/3	.TUBE,COPPER, 0.125 OD X 0.030 WALL, 90.00 IN LG, MAKE FROM COPPER TUBING, P/N ASTM-B280.....	2
18	XDFZZ		96906	MS35871-1-2	TEE.....	2

END OF FIGURE

THIS PAGE INTENTIONALLY LEFT BLANK

THIS PAGE INTENTIONALLY LEFT BLANK

UNIT, DIRECT SUPPORT AND GENERAL SUPPORT MAINTENANCE

REFRIGERATION UNIT, MECHANICAL, 5K BTU, ELECTRIC
MODEL F500RE

REFRIGERATION SYSTEM
TEMPERATURE AND REFRIGERANT GAUGES

REPAIR PARTS LIST

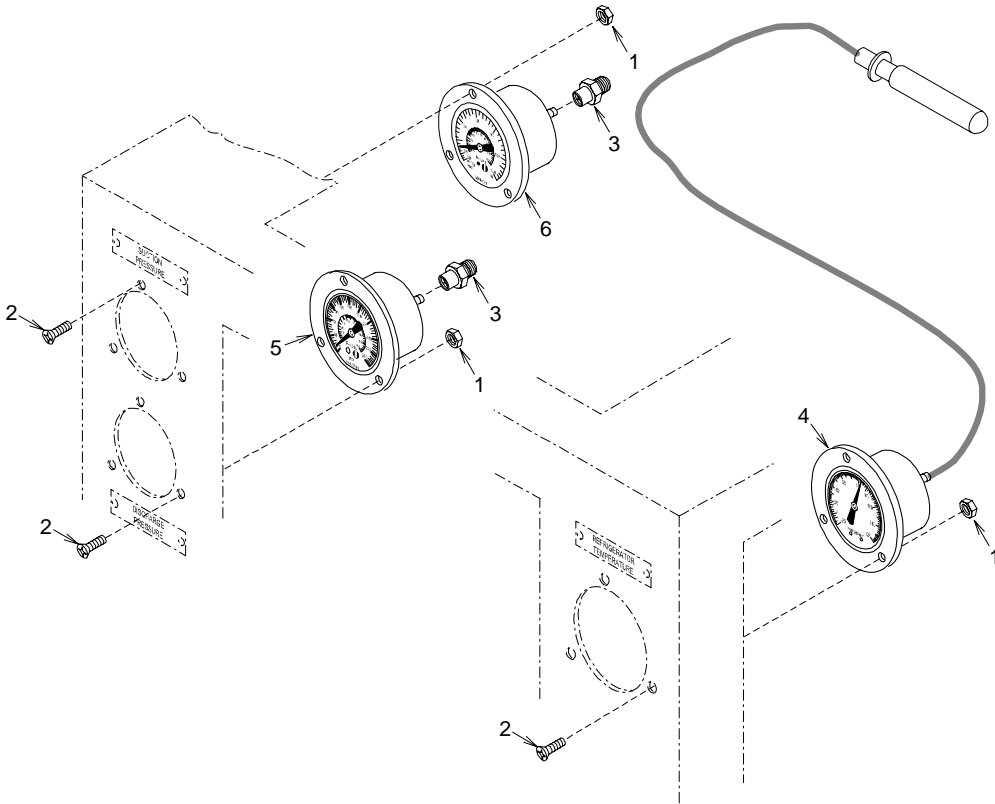


Figure 9. Temperature and Refrigerant Gauges

(1) ITEM NO.	(2) SMR CODE	(3) NSN	(4) CAGEC	(5) PART NUMBER	(6) DESCRIPTION AND USABLE ON CODE (UOC)	(7) QTY
GROUP 04 REFRIGERATION SYSTEM						
FIGURE 9 TEMPERATURE AND REFRIGERANT GAUGES						
1	XDFZZ		94833	500K1927-1	NUT,HEX,SELF-LOCKING.....	9
2	PAFZZ	5305-00-958-2918	96906	MS24693-C26	SCREW,MACHINE.....	9
3	PAFZZ	4730-00-090-0832	41947	A-4622	ADAPTER,STRAIGHT,PIPE TO TUBE	2
4	PAFZZ	6685-00-987-5600	96906	MS27211-2	THERMOMETER,INDICATING, (REFRIGERATOR TEMPERATURE).....	1
5	PAFZZ	6685-00-924-9434	61510	1085A27G02	GAGE,PRESSURE,DIAL INDICATING (DISCHARGE PRESSURE).....	1
6	PAFZZ	6685-00-948-0928	94833	500K1857-1C	GAGE,COMPOUND PRESSURE, (SUCTION PRESSURE)	1

END OF FIGURE

THIS PAGE INTENTIONALLY LEFT BLANK

THIS PAGE INTENTIONALLY LEFT BLANK

UNIT, DIRECT SUPPORT AND GENERAL SUPPORT MAINTENANCE

REFRIGERATION UNIT, MECHANICAL, 5K BTU, ELECTRIC
MODEL F500RE

REFRIGERATION SYSTEM
EVAPORATOR ASSEMBLY

REPAIR PARTS LIST

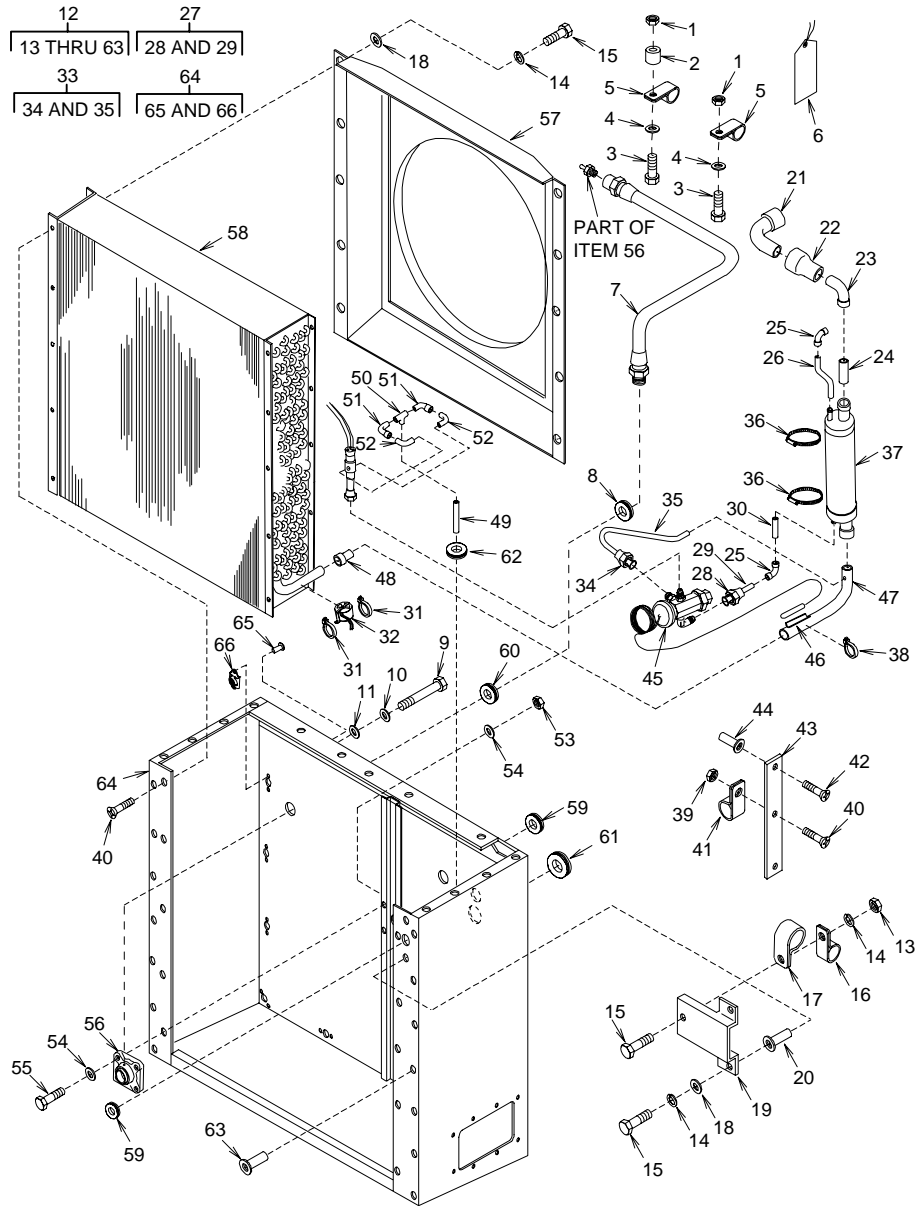


Figure 10. Evaporator Assembly

(1) ITEM NO.	(2) SMR CODE	(3) NSN	(4) CAGEC	(5) PART NUMBER	(6) DESCRIPTION AND USABLE ON CODE (UOC)	(7) QTY
GROUP 04 REFRIGERATION SYSTEM						
FIGURE 10 EVAPORATOR ASSEMBLY						
1	XDOZZ		94833	500K1927-3	NUT,HEX,SELF-LOCKING.....	2
2	XDOZZ		97403	13211E8376-6	SPACER.....	1
3	XDOZZ		94833	500K1928-22	BOLT,HEX HEAD	2
4	XBOZZ		94833	500K1926-3	WASHER,FLAT.....	2
5	PAOZZ	5340-01-183-0982	96906	MS21919WCG8	CLAMP,LOOP.....	2
6	XDOZZ		94833	149K0056	TAG,LUBRICATION.....	1
7	XDOZZ		94833	500K2042	EXTENSION,GREASE FITTING	1
8	PAOZZ	5325-00-795-0719	96906	MS35489-43	GROMMET,NONMETALLIC.....	1
9	XDFZZ		94833	53572-6-76	SCREW,CAP,HEX HEAD.....	16
10	XDFZZ		94833	500K1926-6	WASHER,LOCK.....	16
11	PAFZZ	5310-00-802-4701	80205	MS15795-813	WASHER,FLAT.....	16
12	XDFFF		94833	148K0034-1	EVAPORATOR ASSEMBLY.....	1
13	XDFZZ		94833	500K1927-3	.NUT,HEX,SELF-LOCKING.....	1
14	XDFZZ		94833	500K1950-3	.WASHER,SPRING LOCK.....	13
15	XDFZZ		94833	500K1928-21	.BOLT,HEX HEAD.....	13
16	PAFZZ	5340-01-148-3722	96906	MS21919WCG6	.CLAMP,LOOP.....	1
17	PAFZZ	5340-01-132-8740	96906	MS21919WCG7	.CLAMP,LOOP.....	1
18	XDFZZ		94833	500K1926-3	.WASHER,FLAT.....	12
19	XBFZZ		94833	148K0156	BRACKET,SENSING BULB	1
20	XDFZZ		96906	MS27130- CR127K	.NUT,BLIND RIVET.....	2
21	PAFZZ	4730-00-027-0773	97403	13216E6176-6	.ELBOW,TUBE.....	1
22	PAFZZ	4730-00-264-9174	96906	MS35923-8	.REDUCER,TUBE.....	1
23	PAFZZ	4730-00-839-6380	96906	MS35928-5	.ELBOW,TUBE.....	1
24	MFFZZ		94833	148K0172	.TUBE,COPPER, 0.625 OD X 0.035 WALL, 1.25 IN LG, MAKE FROM COPPER TUBING, P/N ASTM-B280.....	1
25	PAFZZ	4730-01-397-1195	41947	W-2009	.ELBOW,TUBE.....	2
26	MFFZZ		94833	148K0174	.TUBE,COPPER, 0.375 OD X 0.032 WALL, 5.31 IN LG, MAKE FROM COPPER TUBING, P/N ASTM-B280.....	1
27	MFFZZ		94833	148K0169-1	.TUBE,EXPANSION VALVE TO HEAT EXCHANGER.....	1
28	MFFZZ		94833	148K0169	.TUBE,COPPER, 0.375 OD X 0.032 WALL, 2.06 IN LG, MAKE FROM COPPER TUBING, P/N ASTM-B280.....	1
29	PAFZZ	4730-00-189-2739	93061	14FSX-6	.NUT,TUBE COUPLING.....	1
30	MFFZZ		94833	148K0170	.TUBE,COPPER, 0.375 OD X 0.032 WALL, 1.13 IN LG, MAKE FROM COPPER TUBING, P/N ASTM-B280.....	1
31	PAFZZ	5975-00-111-3208	96906	MS3367-5-9	STRAP,TIEDOWN,ELECT RICAL.....	2
32	PAFZZ	5930-01-211-3339	14859	2064OL15-496- 210L45-2.10	.SWITCH,THERMOSTATIC.....	1

(1) ITEM NO.	(2) SMR CODE	(3) NSN	(4) CAGEC	(5) PART NUMBER	(6) DESCRIPTION AND USABLE ON CODE (UOC)	(7) QTY
33	XDFFF		94833	148K0171-1	.TUBE,EXPANSION VALVE	1
34	PAFZZ	4730001892737	41947	A5051	..NUT,TUBE COUPLING.....	1
35	MFFZZ		94833	148K0171	..TUBE,COPPER 0.250 OD X 0.035 WALL, 7.61 IN LG, MAKE FROM COPPER TUBING, P/N ASTM-B280	1
36	PAFZZ	4730009098627	01276	FF9311-36	.CLAMP,HOSE.....	2
37	PAFZZ	4130014913893	97765	H100	.HEAT INTERCHANGER,REFRIGERANT...	1
38	PAFZZ	5975005709598	96906	MS3367-7-9	.STRAP,TIEDOWN,ELECTRICAL.....	2
39	XDFZZ		94833	500K1927-2	.NUT,HEX,SELF-LOCKING.....	2
40	PAFZZ	5305009577086	96906	MS24693S273	.SCREW,MACHINE.....	11
41	PAFZZ	5340011439758	96906	MS21919WCG16	.CLAMP,LOOP.....	1
42	PAFZZ	5305000889666	96906	MS24693-C51	.SCREW,MACHINE.....	2
43	XDFZZ		94833	148K0155	.STRAP,MOUNTING.....	1
44	PAFZZ	5310011016048	96906	MS27130CR94K	NUT,PLAIN,BLIND RIVET	2
45	PAFZA	4820014920265	70255	AFAE1/2MC 3/8 X 1/2 SAE	.VALVE,EXPANSION.....	1
46	MFFZZ		94833	152K0194	.CONTACT CRADLE, SENSING BULB, 0.500 OD X 0.032 WALL, 2.00 IN LG, MAKE FROM COPPER TUBING, P/N ASTM-B280.....	1
47	MFFZZ		94833	148K0168	.TUBE,COPPER, 0.625 OD X 0.032 WALL. 6.74 IN LG, MAKE FROM COPPER TUBING, P/N ASTM-B280.....	1
48	PAFZZ	4730-00-264-9177	96906	MS35923-11	.REDUCER,TUBE.....	1
49	MFFZZ		94833	148K0173	.TUBE,COPPER, 0.375 OD X 0.032 WALL, 4.00 IN LG, MAKE FROM COPPER TUBING, P/N ASTM-B280.....	1
50	PAFZZ	4730-00-263-6460	80204	B16-22	.TEE,TUBE.....	1
51	PAFZZ	4730-00-277-7922	41947	W-2312	.ELBOW,TUBE.....	2
52	PAFZZ	4730-00-068-3362	41947	W2612	.ELBOW,TUBE.....	2
53	XDFZZ		94833	500K1927-6	.NUT,HEX,SELF-LOCKING.....	4
54	XDFZZ		94833	500K1926-6	.WASHER,FLAT.....	8
55	XBFZZ		94833	500K1928-59	.BOLT,HEX HEAD.....	4
56	PAFZZ	3130-01-485-1737	94833	500K1866	.BEARING UNIT,BALL.....	1
57	XDFZZ		94833	148K0069-1	.SHROUD WELDMENT, EVAPORATOR.....	1
58	PAFZZ	4130-01-492-0982	OSN36	983921C	EVAPORATOR COIL,REFRIGERATION ...	1
59	PAFZZ	5325-00-185-0004	96906	MS35489-40	.GROMMET,NONMETALLIC.....	3
60	PAFZZ	5325-00-285-8363	96906	MS35489-45	.GROMMET,NONMETALLIC.....	1
61	PAFZZ	5325-00-276-6080	96906	MS35489-125	.GROMMET,NONMETALLIC.....	1
62	PAFZZ	5325-01-088-7468	91265	3134	.GROMMET,NONMETALLIC.....	1
63	PAFZZ	5310-00-068-1322	96906	MS27130- CR93K	NUT,PLAIN,BLIND RIVET	42
64	XDFZZ		94833	148K0035-1	.FRAME WELDMENT,EVAPORATOR	1
65	PAFZZ	5320-00-411-9439	77272	BACR15DR3-3	..RIVET,BLIND.....	32
66	PAFZZ	5310-00-881-0715	19203	8830092	NUT,SELF-LOCKING,PLATE	16

END OF FIGURE

THIS PAGE INTENTIONALLY LEFT BLANK

UNIT, DIRECT SUPPORT AND GENERAL SUPPORT MAINTENANCE

REFRIGERATION UNIT, MECHANICAL, 5K BTU, ELECTRIC
MODEL F500RE

REFRIGERATION SYSTEM
COMPRESSOR

REPAIR PARTS LIST

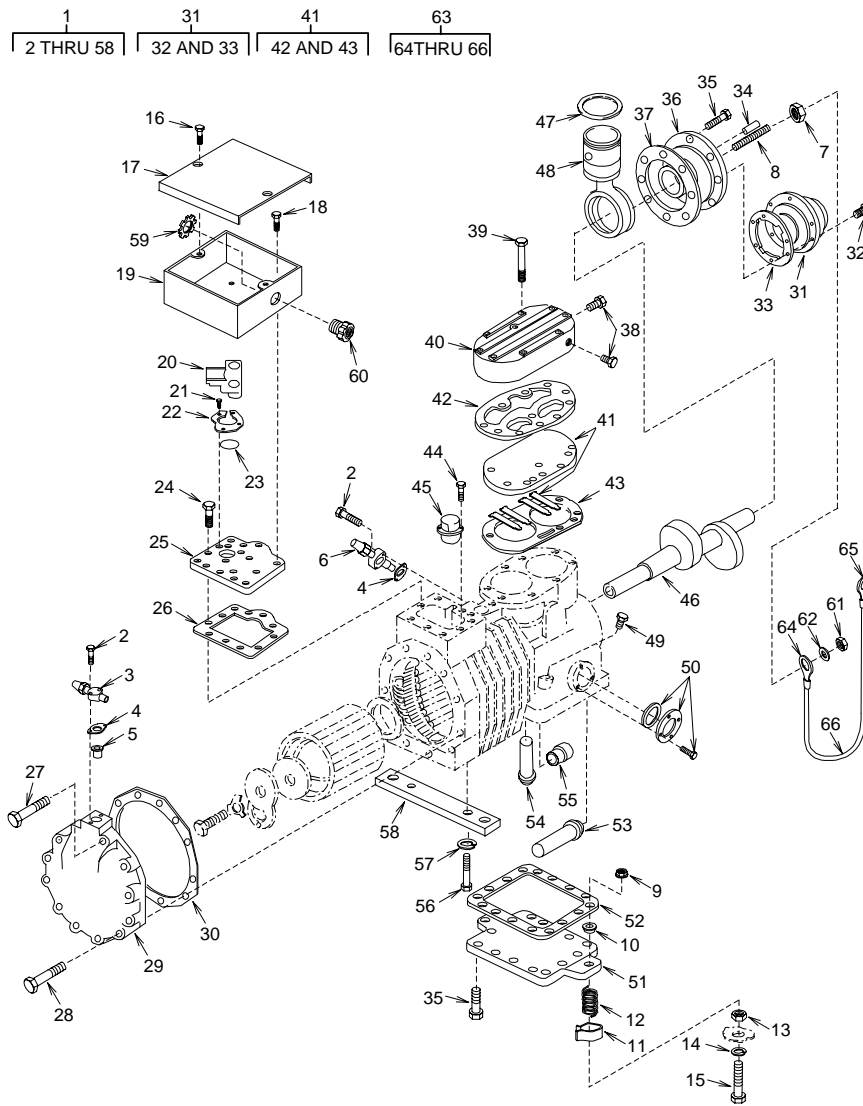


Figure 11. Compressor

(1) ITEM NO.	(2) SMR CODE	(3) NSN	(4) CAGEC	(5) PART NUMBER	(6) DESCRIPTION AND USABLE ON CODE (UOC)	(7) QTY
GROUP 04 REFRIGERATION SYSTEM						
FIGURE 11 COMPRESSOR						
1	PAFFZ	4130-01-491-6683	14569	NRD1-032E-TFC- 22	COMPRESSOR,UNIT,REFRIGERATION	1
2	PAFZZ	5305-01-058-1191	14569	100-0013-13	SCREW,CAP,HEXAGON HEAD	4
3	PAFZZ	4820-00-836-1587	14569	998-0510-13	.VALVE,SUCTION	1
4	PAFZZ	5330012789526	14569	020-0012-11	.GASKET	2
5	XDFZZ		14569	013-0010-01	.SCREEN,SUCTION	1
6	PAFZZ	482001-148-9267	14569	510-0218-01	VALVE,SERVICE,COMPRESSOR	1
7	XDFZZ		14569	101-0024-01	.NUT,CONELock	2
8	XDFZZ		14569	103-0025-06	.STUD	2
9	XDFZZ		14569	101-0006-00	.LOCKNUT	4
10	PAFZZ	536501-485-0522	14569	027-0192-00	SPACER,SPECIAL SHAPE	4
11	XBFZZ		14569	074-0619-00	.BRACKET,SHIPPING	4
12	XDFZZ		14569	006-0012-01	.SPRING,COMPRESSOR	4
13	XDFZZ		14569	101-0002-12	.NUT,HEXAGON	4
14	XDFZZ		14569	102-0010-11	.WASHER,LOCK SPRING	4
15	XDFZZ		14569	100-0012-06	.SCREW,HEX HEAD	4
16	XDFZZ		14569	100-0180-02	.SCREW,HEX HEAD	2
17	XDFZZ		14569	505-0252-10	.COVER,TERMINAL ASSY	1
18	PAFZZ	5305-00-450-1943	14569	100-0063-02	SCREW,ASSEMBLED WASHER	4
19	PAFZZ	5940-00-981-2568	14569	062-0058-00	.TERMINAL BOX	1
20	XDFZZ		14569	021-0005-00	.TERMINAL BOARD	1
21	PAFZZ	5305-00-981-2570	14569	100-0013-02	.SCREW	3
22	PAFZZ	4130-00-981-2582	14569	521-0018-00	.PLATE	1
23	PAFZA	5331-01-484-7302	14569	020-0844-00	.O-RING	1
24	PAFZZ	5306-00-450-4229	14569	100-0077-01	.BOLT,MACHINE	10
25	XBFZZ		14569	003-0112-02	.PLATE,TERMINAL MTG	1
26	PAFZZ	5330-00-587-6405	14569	NR46-054	.GASKET	1
27	XDFZZ		14569	100-0062-44	.SCREW	2
28	XDFZZ		14569	100-0218-02	.SCREW,HEX HEAD,CAP	10
29	XDFZZ		14569	005-0288-00	.COVER,STATOR	1
30	PAFZZ	5330-00-140-8223	14569	020-0054-00	.GASKET	1
31	XDFFF		14569	509-0034-04	.PUMP,OIL GROUP	1
32	XDFZZ		14569	100-0013-20	.SCREW,HEX HEAD	6
33	PAFZZ	5330-01-276-5774	14569	020-0732-00	.GASKET	1
34	XDFZZ		14569	011-0001-03	.PIN,DOWEL	1
35	XDFZZ		14569	100-0182-03	.SCREW	23
36	XDFZZ		14569	505-0013-04	.COVER,HOUSING	1
37	PAFZZ	5330-01-450-6166	14569	020-0749-00	.GASKET	1
38	PAFZZ	4130-01-032-0828	14569	036-0008-02	.PLUG	2
39	XDFZZ		14569	100-0062-52	.SCREW,HEX HEAD	9

(1) ITEM NO.	(2) SMR CODE	(3) NSN	(4) CAGEC	(5) PART NUMBER	(6) DESCRIPTION AND USABLE ON CODE (UOC)	(7) QTY
40	XDFZZ		14569	002-0358-00	.HEAD,CYLINDER.....	1
41	PAFZZ	4130-01-492-7193	14569	998-0661-59	VALVE PLATE,COMPRESSOR	1
42	PAFZZ	5330-01-311-1484	14569	020-0611-00	..GASKET.....	1
43	PAFZZ	5330-01-043-7245	14569	020-0125-04	..GASKET.....	1
44	PAFZZ	5305-00-981-2578	14569	100-0028-04	.SCREW.....	2
45	XDFZZ		14569	071-0429-30	.PROTECTOR.....	1
46	PAFZZ	4130-00-896-2011	14569	NR46-007	.SHAFT ECCENTRIC.....	1
47	PAFZZ	4130-00-587-6488	14569	025-0008-00	.RING PISTON.....	2
48	XAFZZ		14569	504-0001-59	.PISTON,PIN & ROD.....	2
49	PAFZZ	4130-00-235-6381	14569	536-0002-00	.PLUG AND SEAL ASSEMBLY	1
50	PAFZZ	6680-00-856-3891	14569	570-0006-00	.GLASS ASSEMBLY,OIL.....	1
51	PAFZZ	4130-01-185-6950	14569	003-0099-00	BOTTOM PLATE,COMPRESSOR	1
52	PAFZZ	5330-00-359-6272	14569	020-0159-00	.GASKET.....	1
53	XDFZZ		14569	513-0004-00	.SCREEN,OIL STRAINER.....	1
54	XDFZZ		14569	510-0209-00	.VALVE,CHECK.....	1
55	PAFZZ	4820-00-980-1671	14569	510-0142-00	.VALVE,CHECK.....	1
56	XDFZZ		14569	100-0062-46	.SCREW,HEX HEAD.....	2
57	PAFZZ	5310-00-981-2584	14569	102-0010-08	.WASHER.....	2
58	PAFZZ	4130-01-149-5753	14569	003-0060-00	.FOOT,MOUNTING.....	1
59	PAFZZ	5975-00-642-7261	56501	142	LOCKNUT,ELECTRICAL.....	1
60	PAFZZ	5975-00-539-6912	59730	2535	BOX CONNECTOR,ELECTRICAL	1
61	XDFZZ		94833	500K1927-6	NUT,HEX,SELF-LOCKING.....	1
62	XDFZZ		94833	500K1926-6	WASHER,FLAT.....	1
63	XDOOO		94833	152K0183-1	STRAP,GROUND.....	1
64	PAOZZ	5940-00-114-1316	96906	MS20659-130	.TERMINAL,LUG.....	1
65	PAOZZ	5940-00-115-2676	96906	MS20659-143	.TERMINAL,LUG.....	1
66	MOOZZ		94833	152K0183-1/1	.BRAID,WIRE,TUBULAR, 9 IN LG, MAKE FROM BRAID,TUBULAR, P/N QQB575/ R30T375.....	1

END OF FIGURE

THIS PAGE INTENTIONALLY LEFT BLANK

UNIT, DIRECT SUPPORT AND GENERAL SUPPORT MAINTENANCE

REFRIGERATION UNIT, MECHANICAL, 5K BTU, ELECTRIC
MODEL F500RE

HOUSING
HEAT SHIELD FRAME

REPAIR PARTS LIST

3
4 THRU 10

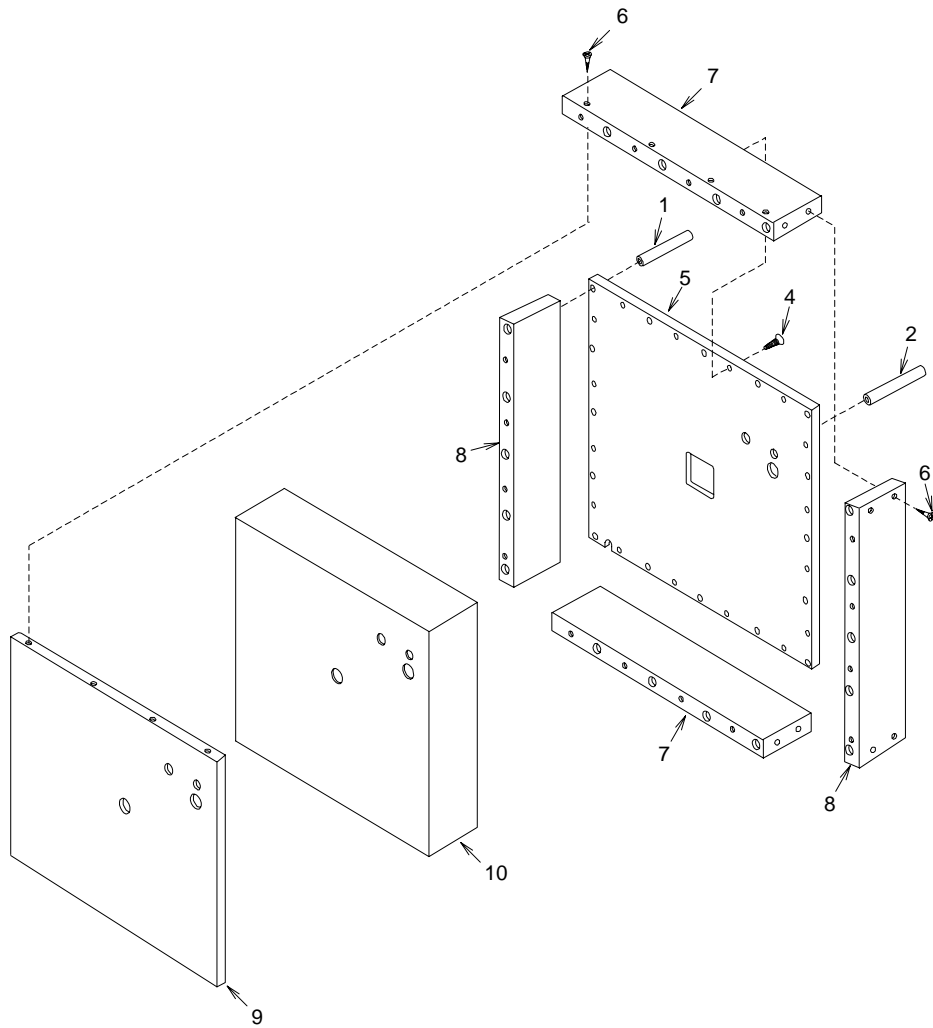


Figure 12. Heat Shield Frame

(1) ITEM NO.	(2) SMR CODE	(3) NSN	(4) CAGEC	(5) PART NUMBER	(6) DESCRIPTION AND USABLE ON CODE (UOC)	(7) QTY
GROUP 05 HOUSING						
FIGURE 12 HEAT SHIELD FRAME						
1	XDFZZ		94833	152K0127-3	SLEEVE,MOUNTING.....	16
2	XDFZZ		94833	152K0131	SLEEVE,ACCESS.....	1
3	PAFFF	4110-01-491-4284	94833	148K0028-1	HEAT SHIELD,FRAME.....	1
4	XDFZZ		94833	53581-8-20	.SCREW,WOOD,FLAT HD.....	16
5	XDFZZ		94833	148K0029	.SHEET,FRAME.....	1
6	XDFZZ		94833	53581-8-32	.SCREW,WOOD,FLAT HD.....	24
7	XDFZZ		94833	152K0104-5	.BEAM,FRAME.....	2
8	XDFZZ		94833	152K0104-7	.BEAM,FRAME.....	2
9	XDFZZ		94833	148K0142	.SHEET,CLOSURE.....	1
10	XDFZZ		94833	148K0025	INSULATION,HEAT SHIELD	1

END OF FIGURE

THIS PAGE INTENTIONALLY LEFT BLANK

THIS PAGE INTENTIONALLY LEFT BLANK

UNIT, DIRECT SUPPORT AND GENERAL SUPPORT MAINTENANCE

REFRIGERATION UNIT, MECHANICAL, 5K BTU, ELECTRIC
MODEL F500RE

HOUSING
HEAT SHIELD GASKETS

REPAIR PARTS LIST

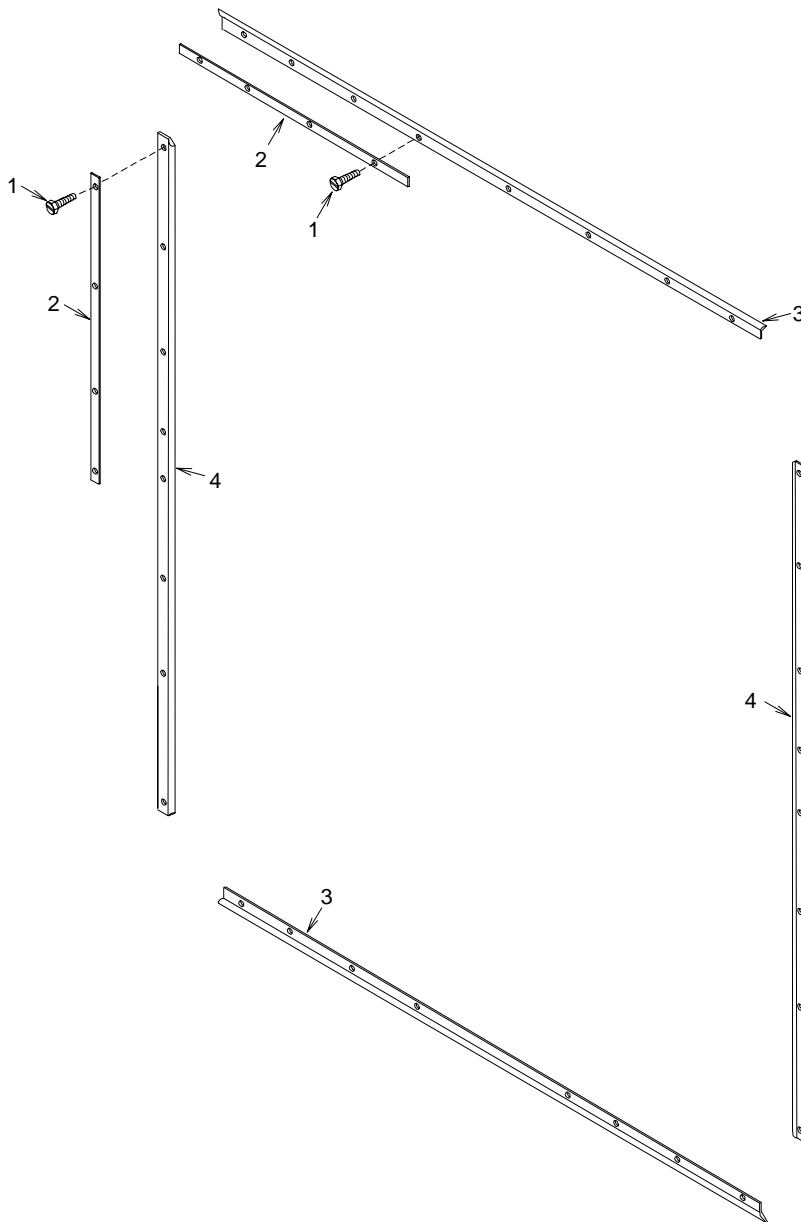


Figure 13. Heat Shield Gaskets

(1) ITEM NO.	(2) SMR CODE	(3) NSN	(4) CAGEC	(5) PART NUMBER	(6) DESCRIPTION AND USABLE ON CODE (UOC)	(7) QTY
GROUP 05 HOUSING						
FIGURE 13 HEAT SHIELD GASKETS						
1	PAFZZ	5305-01-136-5330	96906	MS51851-53	SCREW,TAPPING.....	32
2	XDFZZ		94833	150K0168-1	STRIP,GASKET RETAIN.....	8
3	MFFZZ		94833	148K0143	GASKET,OUTSIDE, TOP/BOTTOM, 33.88 IN LG, MAKE FROM GASKET, P/N (74951)V-1234-25.....	2
4	MFFZZ		94833	148K0144	GASKET,OUTSIDE,RIGHT/LEFT SIDE. 32.50 IN LG, MAKE FROM GASKET, P/N (74951)V-1234-25	2

END OF FIGURE

THIS PAGE INTENTIONALLY LEFT BLANK

THIS PAGE INTENTIONALLY LEFT BLANK

UNIT, DIRECT SUPPORT AND GENERAL SUPPORT MAINTENANCE

REFRIGERATION UNIT, MECHANICAL, 5K BTU, ELECTRIC
MODEL F500RE

HOUSING
UNIT MARKING PLATES AND CONDENSER FRAME

REPAIR PARTS LIST

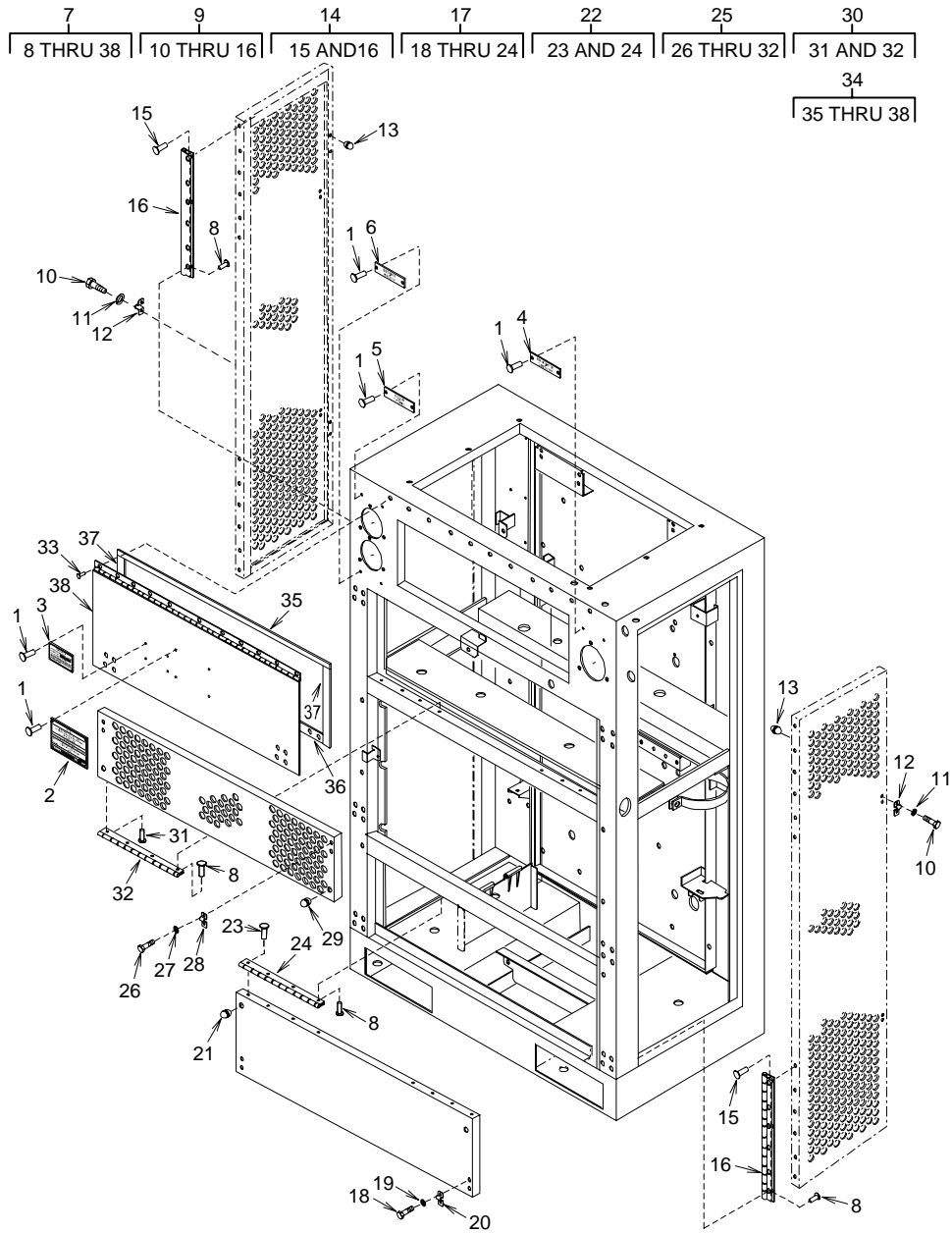


Figure 14. Unit Marking Plates and Condenser Frame

(1) ITEM NO.	(2) SMR CODE	(3) NSN	(4) CAGEC	(5) PART NUMBER	(6) DESCRIPTION AND USABLE ON CODE (UOC)	(7) QTY
GROUP 05 HOUSING						
FIGURE 14 UNIT MARKING PLATES CONDENSER FRAME						
1	XDFZZ		94833	500K2031-139	RIVET,STRUCTURAL.....	14
2	PAFZZ	9905-01-493-8110	94833	120K1491	PLATE,IDENTIFICATION	1
3	PAFZZ	9905-01-484-4562	94833	120K1520	PLATE,IDENTIFICATION	1
4	PAFZZ	9905-01-483-3664	94833	148K0164-3	PLATE,IDENTIFICATION (TEMP)	1
5	PAFZZ	9905-01-483-3661	94833	148K0164-1	PLATE,IDENTIFICATION (HIGH)	1
6	PAFZZ	9905-01-483-3658	94833	148K0164-5	PLATE,IDENTIFICATION (LOW)	1
7	XDFFF		94833	149K0001-1	FRAME,CONDENSER.....	1
8	PAFZZ	5320-01-258-4675	05693	SSPV-64	..RIVET,BLIND.....	40
9	PAFZZ	5340-01-492-4439	94833	148K0074-1	..ACCESS,GENERAL PURPURPOSE/LEFT/ RIGHT SIDE.....	2
10	XDOZZ		94833	500K1928-21	..BOLT,HEX HEAD.....	4
11	XDOZZ		94833	500K1950-3	..WASHER,SPRING LOCK.....	4
12	PAOZZ	5340-01-486-2051	81348	A-A-466/TYI- 2.5L -FZ	..BOLT,BARREL (CLIP ONLY USED)	2
13	PAOZZ	5340-00-598-7840	70485	806	..BUMPER,NONMETALLIC.....	4
14	XDFZZ		94833	148K0075-1	..DOOR,LEFT/RIGHT SIDE	1
15	PAFZZ	5320-01-258-4675	05693	SSPV-64	...RIVET,BLIND.....	12
16	XDFZZ		94833	148K0077	...HINGE.....	2
17	PAFZZ	5340-01-492-4447	94833	149K0034-1	..ACCESS,GENERAL PURPOSE, BOTTOM..	1
18	XDOZZ		94833	500K1928-21	..BOLT,HEX HEAD.....	4
19	XDOZZ		94833	500K1950-3	..WASHER,SPRING LOCK.....	4
20	PAOZZ	5340-01-486-2051	81348	A-A-466/TYI-2.5L -FZ	..BOLT,BARREL (CLIP ONLY USED)	2
21	PAOZZ	5340-00-598-7840	70485	806	..BUMPER,NONMETALLIC.....	4
22	XDFZZ		94833	149K0035-1	..DOOR,FRONT BOTTOM.....	1
23	PAFZZ	5320-01-258-4675	05693	SSPV-64	...RIVET,BLIND.....	8
24	XDFZZ		94833	149K0037	...HINGE.....	2
25	PAFZZ	5340-01-492-4448	94833	149K0038-1	..ACCESS,GENERAL PURPOSE	1
26	XDOZZ		94833	500K1928-21	..BOLT,HEX HEAD.....	4
27	XDOZZ		94833	500K1950-3	..WASHER,SPRING LOCK.....	4
28	PAOZZ	5340-01-486-2051	81348	A-A-466/TYI- 2.5L -FZ	..BOLT,BARREL (CLIP ONLY USED)	2
29	PAOZZ	5340-00-598-7840	70485	806	..BUMPER,NONMETALLIC.....	4
30	XDFZZ		94833	149K0039-1	..DOOR,FRONT TOP.....	1
31	PAFZZ	5320-01-258-4675	05693	SSPV-64	...RIVET,BLIND.....	6
32	XDFZZ		94833	149K0037	...HINGE.....	2

(1) ITEM NO.	(2) SMR CODE	(3) NSN	(4) CAGEC	(5) PART NUMBER	(6) DESCRIPTION AND USABLE ON CODE (UOC)	(7) QTY
33	XDOZZ		94833	500K2031-151	.RIVET.....	11
34	PAFZZ	5340-01-492-4453	94833	149K0070-1	.DOOR,ACCESS,GENERAL PURPOSE, CONTROL BOX.....	1
35	MFFZZ		94833	149K0073	..GASKET,COVER, 0.0625 X .05625 X 33.50 IN LG, MAKE FROM GASKET, P/N ASTM-D1056-2A2C2F2.....	1
36	MFFZZ		94833	149K0072-1	..GASKET,COVER 0.125 X 1.00 X 31.50 IN LG, MAKE FROM GASKET, P/N ASTM-D 1056-2A2C2F2.....	1
37	MFFZZ		94833	149K0072-3	..GASKET,COVER, 0.125 X 1.00 X 9.125 IN LG, MAKE FROM GASKET, P/N ASTM-D1056-2A2C2F2.....	2
38	XDFZZ		94833	149K0069	..COVER,CONTROL BOX.....	1

END OF FIGURE

UNIT, DIRECT SUPPORT AND GENERAL SUPPORT MAINTENANCE

REFRIGERATION UNIT, MECHANICAL, 5K BTU, ELECTRIC
MODEL F5000RE

BULK MATERIAL

REPAIR PARTS LIST

(1) ITEM NO.	(2) SMR CODE	(3) NSN	(4) CAGEC	(5) PART NUMBER	(6) DESCRIPTION AND USABLE ON CODE (UOC)	(7) QTY
					GROUP BULK MATERIAL	
					FIGURE BULK	
1	PAOZZ	5640-01-195-6254	87335	S-404	ACOUSTICAL FOAM.....	V
2	PAOZZ	6145-00-191-8403	81348	QQB575R30T0 281	BRAID,WIRE.....	100
3	PAOZZ	6145-00-191-8404	81348	QQB575R30T0 375	BRAID,WIRE.....	100
4	PAOZZ	6145-01-484-4081	94833	500K1915-5	CABLE,POWER,ELECTRICAL.....	1
5	PAOZZ	4010-01-491-9408	94833	12290-8-8000	CHAIN,WELDLESS.....	1
6	XDOZZ		81346	ASTMD10562A 2C2F2-1/8	GASKET 0.125 THK, 40 IN X 70 IN SHEETS.....	V
7	PAOZZ	5325-00-926-1394	81205	BACG20Z-C0252	GROMMET,NONMETALLIC.....	1
8	PAOZZ	5970-00-812-2968	81343	M23053/5-102-0	INSULATION SLEEVING, 1000 FOOT SPOOLS.....	1
9	PAOZZ	5970-00-814-2878	81349	M23053/5-106-9	INSULATION SLEEVING.....	1
10	PAOZZ	5970-00-954-1624	81349	M23053/5-107-0	INSULATION SLEEVING.....	1
11	PAOZZ	5970-00-740-2971	81349	M23053/5-107-9	INSULATION SLEEVING.....	1
12	XDFZZ		97403	13214E0600-219	INSULATION SLEEVING,THERMAL, 0.875 ID X 0.50 WALL, PLASTIC MATERIAL, UNICELLULAR TUBE, FORM T.....	V
13	PAFZZ	5330-01-391-2800	74951	V-1234-25	SEAL,NONMETALLIC SPECIAL SHAPE ..	100
14	PAFZZ	4710-00-768-3638	81346	ASTMB280-80	TUBE,METALLIC, (81346)ASTM-B280, 0.125OD X 0.030 WALL.....	250
15	PAFZZ	4710-01-434-0416	81346	ASTM-B280X0. 250	TUBE,METALLIC, (81346)ASTM-B280, 0.250 OD X 0.030 WALL.....	250
16	PAFZZ	4710-00-277-5527	02413	800E2730	TUBE,METALLIC, (81346)ASTM-B280, 0.375 OD X 0.32 WALL.....	350
17	PAFZZ	4710-00-424-2694	95535	55229	TUBE,METALLIC, (81346)ASTM-B80, 0.500 OD X 0.030 WALL.....	450
18	PAFZZ	4710-00-277-4508	19207	8689211	TUBE,METALLIC, (81346)ASTM-B280, 0.625 OD X 0.035WALL.....	550

(1) ITEM NO.	(2) SMR CODE	(3) NSN	(4) CAGEC	(5) PART NUMBER	(6) DESCRIPTION AND USABLE ON CODE (UOC)	(7) QTY
19	PAFZZ	4710-00-277-4528	16236	CS4710-0004IM	TUBE,METALLIC, (81346)ASTM-280, 0.875 OD X 0.045 WALL.....	650
20	PAOZZ	6145-00-578-7514	81349	M5086/2-12-9	WIRE,ELECTRICAL.....	V
21	PAOZZ	6145-00-578-6604	81349	M5086/2-14-9	WIRE,ELECTRICAL.....	V
22	PAOZZ	6145-00-578-6602	80064	1755702	WIRE,ELECTRICAL.....	V
23	XDOZZ		81346	ASTMD10562A	GASKET, 0.0625 THK, 40 X 70 IN	
				2C2F2-1/16	SHEETS.....	V

END OF FIGURE

UNIT, DIRECT SUPPORT AND GENERAL SUPPORT MAINTENANCE

**REFRIGERATION UNIT, MECHANICAL, 5K BTU, ELECTRIC
MODEL F5000RE**

SPECIAL TOOLS LIST

There are no special tools required for the Refrigeration Unit, Mechanical, 5K BTU, Electric – Model F5000RE.

THIS PAGE INTENTIONALLY LEFT BLANK

UNIT, DIRECT SUPPORT AND GENERAL SUPPORT MAINTENANCE

REFRIGERATION UNIT, MECHANICAL, 5K BTU, ELECTRIC
MODEL F5000RE

NATIONAL STOCK NUMBER INDEX

STOCK NUMBER	FIG.	ITEM	STOCK NUMBER	FIG.	ITEM
4730-00-021-4172	7	36	5325-00-185-0004	7	82
4730-00-027-0773	10	21	5325-00-185-0004	11	59
5305-00-066-7327	4	44	4730-00-189-2737	8	11
5310-00-068-1322	10	63	4730-00-189-2737	8	16
4730-00-068-3362	10	52	4730-00-189-2737	10	34
5305-00-088-9666	1	6	4730-00-189-2739	7	10
5305-00-088-9666	10	42	4730-00-189-2739	7	64
5305-00-088-9670	4	37	4730-00-189-2739	7	71
4730-00-090-0832	9	3	4730-00-189-2739	7	87
5975-00-111-3208	10	31	4730-00-189-2739	10	29
5940-00-113-9828	3	153	4730-00-189-2742	7	46
5940-00-114-1316	4	39	4730-00-189-2742	10	29
5940-00-114-1316	6	14	6145-00-191-8403	BULK	2
5940-00-114-1316	11	64	6145-00-191-8404	BULK	3
5940-00-115-2676	6	15	5340-00-200-8560	2	7
5310-00-121-8009	4	53	5940-00-204-8966	3	31
5930-00-126-3132	5	20	5940-00-204-8966	3	34
5940-00-143-4661	3	22	5940-00-204-8966	3	37
5940-00-143-4661	3	40	5940-00-204-8966	3	45
5940-00-143-4771	3	27	5940-00-204-8966	3	52
5940-00-143-4771	3	91	5940-00-204-8966	3	56
5940-00-143-4771	3	123	5940-00-204-8966	3	67
5940-00-143-4774	3	16	5940-00-204-8966	3	75
5940-00-143-4774	3	19	5940-00-204-8966	3	78
5940-00-143-4777	3	174	5940-00-204-8966	3	82
5940-00-143-4780	3	42	5940-00-204-8966	3	96
5940-00-143-4794	3	4	5940-00-204-8966	3	100
5940-00-143-4794	3	7	5940-00-204-8966	3	103
5940-00-143-4794	3	10	5940-00-204-8966	3	108
5940-00-143-4794	3	24	5940-00-204-8966	3	113
5940-00-143-4794	3	142	5940-00-204-8966	3	116
5940-00-143-4794	3	157	5940-00-204-8966	3	119
5940-00-143-4794	3	160	5940-00-204-8966	3	122
5940-00-143-4794	3	163	5940-00-204-8966	3	128
5940-00-143-4794	3	166	5940-00-204-8966	3	131
5940-00-143-4794	3	170	5940-00-204-8966	3	136
5975-00-152-1144	6	17	5940-00-204-8966	3	139
5975-00-156-3253	3	1	5940-00-204-8966	3	169
5325-00-174-5316	4	50	5940-00-204-8966	3	173
5325-00-185-0004	2	8	4130-00-226-1578	7	4

STOCK NUMBER	FIG.	ITEM	STOCK NUMBER	FIG.	ITEM
4730-00-228-0826	7	21	5330-00-587-6405	11	26
4130-00-235-6381	11	49	5340-00-598-7840	14	13
5325-00-249-6345	7	85	5340-00-598-7840	14	21
4730-00-254-6211	7	40	5340-00-598-7840	14	29
4730-00-254-6211	7	49	5940-00-620-9780	3	63
4730-00-263-6460	10	50	5940-00-620-9780	3	71
4730-00-263-6470	7	42	5940-00-620-9780	3	106
4730-00-264-9174	11	22	5940-00-620-9780	3	111
4730-00-264-9177	11	48	5940-00-620-9780	3	126
5325-00-276-6080	10	61	5940-00-620-9780	3	134
4710-00-277-4508	BULK	18	4730-00-625-6215	7	56
4710-00-277-4528	BULK	19	5975-00-642-7261	4	48
4710-00-277-5527	BULK	16	5975-00-642-7261	5	5
4730-00-277-7922	10	51	5975-00-642-7261	11	59
5975-00-284-6335	5	7	5930-00-683-1628	4	28
5325-00-285-8363	11	60	4730-00-690-0120	7	51
5340-00-286-9427	2	4	5305-00-717-5593	4	14
4820-00-287-3325	7	74	5975-00-727-5153	3	2
5340-00-291-5323	8	8	5970-00-740-2971	BULK	11
5330-00-359-6272	11	52	4710-00-768-3638	BULK	14
5320-00-411-9439	11	65	5325-00-795-0719	10	8
4710-00-424-2694	BULK	17	5310-00-802-4701	10	11
5305-00-450-1943	11	18	5970-00-812-2968	BULK	8
4730-00-471-5663	7	81	4130-00-814-0450	8	4
5970-00-494-8284	7	68	5970-00-814-2878	BULK	9
5970-00-494-8285	3	23	4730-00-818-5190	7	23
5970-00-494-8285	3	41	5325-00-834-1789	4	31
5970-00-494-8285	3	64	4820-00-836-1587	11	3
5970-00-494-8285	3	72	5315-00-839-5821	6	21
5970-00-494-8285	3	107	4730-00-839-6380	10	23
5970-00-494-8285	3	112	6210-00-840-0848	4	12
5970-00-494-8285	3	127	5310-00-881-0715	10	66
5970-00-494-8285	3	135	5305-00-889-2991	5	9
5975-00-539-6912	4	49	5320-00-903-6767	5	11
5975-00-539-6912	5	6	4730-00-909-8627	10	36
5920-00-548-3126	4	13	5325-00-913-2606	8	3
5940-00-557-1629	3	62	6685-00-924-9434	9	5
5940-00-557-1629	3	70	5325-00-926-1394	BULK	7
5940-00-557-1629	3	145	4810-00-928-8927	7	70
5940-00-557-1629	3	152	6240-00-939-7859	4	11
5975-00-570-9598	10	38	6685-00-948-0928	9	6
6145-00-578-6602	BULK	22	5940-00-948-9686	3	48
6145-00-578-6604	BULK	21	5940-00-948-9686	3	55
6145-00-578-7514	BULK	20	5940-00-948-9686	3	59
5340-00-579-9678	7	6	5940-00-948-9686	3	81
5340-00-584-6556	2	3	5940-00-948-9686	3	85
5340-00-584-6556	7	25	5940-00-948-9686	3	88
5340-00-584-6560	7	3	5940-00-948-9686	3	92

STOCK NUMBER	FIG.	ITEM	STOCK NUMBER	FIG.	ITEM
5940-00-948-9686	3	95	9905-01-483-3661	14	5
5940-00-948-9686	3	99	9905-01-483-3664	14	4
5970-00-954-1624	BULK	10	9905-01-484-3216	7	32
5305-00-957-7086	10	40	6145-01-484-4081	BULK	4
5305-00-958-2918	9	2	9905-01-484-4562	14	3
4820-00-980-1671	11	55	6110-01-484-4674	4	20
5940-00-981-2568	11	19	5331-01-484-7302	11	23
5305-00-981-2570	11	21	9905-01-484-7604	6	5
5305-00-981-2578	11	44	9905-01-484-7604	7	33
4130-00-981-2582	11	22	5935-01-484-7746	4	30
5310-00-981-2584	11	57	6645-01-484-9671	4	29
5940-00-983-6122	4	42	3020-01-485-0024	6	10
6685-00-987-5600	9	4	3020-01-485-0468	6	25
5315-00-995-0569	6	28	5365-01-485-0522	11	10
5305-01-058-1191	11	2	4820-01-485-0527	7	13
5940-01-063-9908	4	24	5340-01-485-0689	7	18
5325-01-088-7468	10	62	4730-01-485-0721	7	8
5305-01-088-5322	1	17	5945-01-485-1175	4	25
5940-01-091-2560	7	67	3130-01-485-1737	6	32
4730-01-092-3835	7	48	3130-01-485-1737	10	56
6210-01-098-3886	4	10	5340-01-486-2051	1	3
5340-01-132-8740	10	17	5340-01-486-2051	1	16
5305-01-136-5330	13	1	5340-01-486-2051	14	12
5340-01-143-9758	10	41	5340-01-486-2051	14	20
5340-01-148-3722	7	80	5340-01-486-2051	14	28
5340-01-148-3722	10	16	6685-01-491-3877	4	32
4820-01-148-9267	11	6	4130-01-491-3893	10	37
5310-01-167-2415	2	14	4130-01-491-4280	7	34
5310-01-167-2415	4	52	4110-01-491-4284	12	3
5935-01-175-8417	4	34	5340-01-491-4667	1	15
5340-01-183-0982	10	5	5320-01-258-4675	14	15
5640-01-195-6254	BULK	1	5320-01-258-4675	14	23
5930-01-211-3339	10	32	5320-01-258-4675	14	31
5325-01-242-7083	7	66	5930-01-491-6595	4	43
5320-01-258-4675	14	8	4130-01-491-6683	11	1
5330-01-276-5774	11	33	6105-01-491-7662	6	18
5330-01-278-99526	11	4	5940-01-491-8499	5	10
5330-01-333-8101	7	19	3040-01-491-9273	6	34
5920-01-366-0796	4	15	6110-01-491-6177	4	19
5330-01-391-2800	BULK	13	4820-01-492-0265	10	45
4730-01-397-1195	7	78	4820-01-492-0295	7	39
4730-01-397-1195	10	25	4140-01-492-0968	6	24
5930-01-430-8645	8	5	4130-01-492-0982	10	58
4710-01-434-0416	BULK	15	4140-01-492-1602	6	33
5999-01-439-5294	4	16	4820-01-492-2995	7	55
6645-01-477-5316	4	27	5925-01-492-3308	4	9
9905-01-483-3658	14	6	4820-01-492-3321	7	12

STOCK NUMBER	FIG.	ITEM	STOCK NUMBER	FIG.	ITEM
5340-01-492-4334	1	5			
5340-01-492-4343	1	10			
5340-01-492-4354	6	8			
5340-01-492-4439	14	9			
5340-01-492-4447	14	7			
5340-01-492-4448	14	25			
5340-01-492-4453	14	34			
5340-01-492-4615	1	13			
4130-01-492-7193	11	41			
9905-01-493-8107	4	47			
9905-01-493-8110	14	2			
9905-01-493-8748	5	13			
9905-01-493-8749	5	12			

END OF WORK PACKAGE

UNIT, DIRECT SUPPORT AND GENERAL SUPPORT MAINTENANCE

REFRIGERATION UNIT, MECHANICAL, 5K BTU, ELECTRIC
MODEL F5000RE

PART NUMBER INDEX

CAGEC	PART NUMBER	STOCK NUMBER	FIG.	ITEM
81348	A-A-466/TYI-2.5L-FZ	5340-01-486-2051	1	3
	A-A-466/TYI-2.5L-FZ	5340-01-486-2051	1	16
	A-A-466/TYI-2.5L-FZ	5340-01-486-2051	14	12
	A-A-466/TYI-2.5L-FZ	5340-01-486-2051	14	20
	A-A-466/TYI-2.5L-FZ	5340-01-486-2051	14	28
41947	A-340		8	13
41947	A-4622	4730-00-090-0832	9	3
1W654	A-521-08	5940-00-557-1629	3	62
1W654	A-521-08	5940-00-557-1629	3	70
1W654	A-521-08	5940-00-557-1629	3	145
1W654	A-521-08	5940-00-557-1629	3	152
98410	A-820-04	5940-00-113-9828	3	153
98410	AA-821-10	5940-00-143-4771	3	27
98410	AA-821-10	5940-00-143-4771	3	91
98410	AA-821-10	5940-00-143-4771	3	123
98410	AA-832-06	5940-00-204-8966	3	96
98410	AA-832-06	5940-00-204-8966	3	100
98410	AA-832-06	5940-00-204-8966	3	103
98410	AA-832-06	5940-00-204-8966	3	108
98410	AA-832-06	5940-00-204-8966	3	116
70255	AFAE1/2MC 3/8 X 1/2 SAE	4820-01-492-0265	10	45
70255	AMI1MM3	6680-00-426-8643	7	76
27192	AN16BNOEC	6110-01-491-6177	4	19
81346	ASTM-B280X0.250	4710-01-434-0416	BULK	15
81346	ASTMD10562A2C2F 2-1/16		BULK	23
81346	ASTMD10562A2C2F 2-1/8		BULK	6
81346	ASTMB280-80	4710-00-768-3638	BULK	14
81343	AS25036-108		3	42
50831	A19AAD-25D	6685-01-491-3877	4	32
71176	A40	3030-01-442-6447	6	9
41947	A5051	4730-00-189-2737	8	11
41947	A5051	4730-00-189-2737	8	16
41947	A5051	4730-00-189-2737	10	34

CAGEC	PART NUMBER	STOCK NUMBER	FIG.	ITEM
1W654	B-972		3	51
1W654	B-972		3	146
1W654	B-972		3	149
81205	BACG20Z-C0252	5325-00-926-1394	BULK	7
77272	BACR15DR3-3	5320-00-411-9439	10	65
98410	BB-837-08	5940-00-143-4774	3	16
98410	BB-837-08	5940-00-143-4774	3	19
71176	BK34	3020-01-485-0024	6	10
80204	B16-22	4730-00-263-6460	10	50
78462	B9F2	4810-01-147-6802	7	69
98410	C-828-10	5940-00-143-4794	3	4
98410	C-828-10	5940-00-143-4794	3	7
98410	C-828-10	5940-00-143-4794	3	10
98410	C-828-10	5940-00-143-4794	3	24
98410	C-828-10	5940-00-143-4794	3	142
98410	C-828-10	5940-00-143-4794	3	157
98410	C-828-10	5940-00-143-4794	3	160
98410	C-828-10	5940-00-143-4794	3	163
98410	C-828-10	5940-00-143-4794	3	166
98410	C-828-10	5940-00-143-4794	3	170
15235	CGB294	5975-00-284-6335	5	7
16236	CS4710-0004IM	4710-00-277-4528	BULK	19
98410	C830-14	5940-00-143-4777	3	174
01963	E13-00M	5930-00-126-3132	5	20
30327	E14A	4730-00-254-6211	7	40
30327	E14A	4730-00-254-6211	7	49
97765	FC 6	4730-01-485-0721	7	8
01276	FF9311-36	4730-00-909-8627	10	36
81349	F02A250V6A	5920-00-548-3126	4	13
97765	H100	4130-01-491-3893	10	37
71176	ITA44		6	26
29215	JD1494	5315-00-839-5821	6	21
81343	J5138-010166BA	4730-00-228-0826	7	21
78462	MKC2	4810-00-928-8927	7	70
80205	MS15795-813	5310-00-802-4701	10	11
96906	MS20066-213	5315-00-995-0569	6	28
96906	MS20659-130	5940-00-114-1316	4	39
96906	MS20659-130	5940-00-114-1316	6	14
96906	MS20659-130	5940-00-114-1316	11	64
96906	MS20659-143	5940-00-115-2676	6	15
96906	MS20659-143	5940-00-115-2676	11	65
96906	MS21919WCG16	5340-01-143-9758	10	41
96906	MS21919WCG6	5340-01-148-3722	7	80
96906	MS21919WCG6	5340-01-148-3722	10	16
96906	MS21919WCG7	5340-01-132-8740	10	17
96906	MS21919WCG8		10	5
96906	MS21919WDG-10	5340-00-584-6556	2	3

CAGEC	PART NUMBER	STOCK NUMBER	FIG.	ITEM
96906	MS21919WDG-10	5340-00-584-6556	7	25
96906	MS21919WDG12	5340-00-286-9427	2	4
96906	MS21919WDG30	5340-00-664-0584-	7	38
96906	MS21919WDG32	5340-00-579-9678	7	6
96906	MS21919WDG4	5340-00-291-5323	8	8
96906	MS21919WDG48	5340-00-584-6560	7	3
96906	MS21919WDG5	5340-00-200-8560	2	7
96906	MS24523-22	5930-00-683-1628	4	28
96906	MS24662-5	5320-00-903-6767	5	11
96906	MS24693-C26	5305-00-958-2918	9	2
96906	MS24693-C28	5305-00-066-7327	4	44
96906	MS24693-C30	5305-00-717-5593	4	14
96906	MS24693-C48		5	9
96906	MS24693-C51	5305-00-088-9666	1	6
96906	MS24693-C51	5305-00-088-9666	10	42
96906	MS24693-C53	5305-00-088-9670	4	37
96906	MS24693-C72		2	10
96906	MS24693S273	5305-00-957-7086	10	40
96906	MS25036-102	5940-00-204-8966	3	45
96906	MS25036-102	5940-00-204-8966	3	52
96906	MS25036-102	5940-00-204-8966	3	56
96906	MS25036-102	5940-00-204-8966	3	67
96906	MS25036-102	5940-00-204-8966	3	113
96906	MS25036-102	5940-00-204-8966	3	119
96906	MS25036-102	5940-00-204-8966	3	122
96906	MS25036-102	5940-00-204-8966	3	128
96906	MS25036-102	5940-00-204-8966	3	131
96906	MS25036-102	5940-00-204-8966	3	136
96906	MS25036-102	5940-00-204-8966	3	139
96906	MS25036-102	5940-00-204-8966	3	169
96906	MS25036-102	5940-00-204-8966	3	173
96906	MS25043-24DA	5935-01-175-8417	4	34
96906	MS27130-CR127K		10	20
96906	MS27130-CR19K	5310-01-167-2415	2	14
96906	MS27130-CR19K	5310-01-167-2415	4	3
96906	MS27130-CR19K	5310-01-167-2415	4	52
96906	MS27130-CR93K	5310-00-068-1322	10	63
96906	MS27130CR94K	5310-01-101-6048	10	44
96906	MS27211-2	6685-00-987-5600	9	4
96906	MS3367-2-9	5975-00-156-3253	3	1
96906	MS3367-4-9	5975-00-727-5153	3	2
96906	MS3367-5-9	5975-00-111-3208	10	31
96906	MS3367-7-9	5975-00-570-9598	10	38
96906	MS35489-118	5325-00-834-1789	4	31

CAGEC	PART NUMBER	STOCK NUMBER	FIG.	ITEM
96906	MS35489-124	5325-00-913-2606	8	3
96906	MS35489-125	5325-00-276-6080	11	61
96906	MS35489-17	5325-01-242-7083	7	66
96906	MS35489-2	5325-00-174-5316	4	50
96906	MS35489-40	5325-00-185-0004	2	8
96906	MS35489-40	5325-00-185-0004	7	82
96906	MS35489-40	5325-00-185-0004	10	59
96906	MS35489-43	5325-00-795-0719	10	8
96906	MS35489-45	5325-00-285-8363	10	60
96906	MS35489-69	5325-00-249-6345	7	85
96906	MS35845-2	4130-00-226-1578	7	4
96906	MS35871-1-2		8	18
96906	MS35872-5	4730-00-189-2742	7	46
96906	MS35923-11		10	48
96906	MS35923-8	4730-00-264-9174	10	22
96906	MS35928-5	4730-00-839-6380	10	23
96906	MS51851-53	5305-01-136-5330	13	1
96906	MS51851-74	5305-01-088-5322	1	17
81343	M23053/5-102-0	5970-00-812-2968	BULK	8
81349	M23053/5-106-9	5970-00-814-2878	BULK	9
81349	M23053/5-107-0	5970-00-954-1624	BULK	10
81349	M23053/5-107-9	5970-00-740-2971	BULK	11
81349	M5086/2-12-9	6145-00-578-7514	BULK	20
81349	M5086/2-14-9	6145-00-578-6604	BULK	21
80205	NAS1329C06KB75	5310-00-121-8009	4	53
14569	NRD1-032E-TFC-220	4130-01-491-6683	11	1
14569	NR46-007		11	46
14569	NR46-054	5330-00-587-6405	11	26
78462	ORI-10-65/225-H- 1 1/8 ODF	4820-01-492-0295	7	39
71176	P1		6	27
50831	P45NCA-12	4130-00-814-0450	8	4
0AUH7	P70MA1C	5930-01-430-8645	8	5
51107	QC-11	5935-01-484-7746	4	30
81348	QQB575R30T0281	6145-00-191-8403	BULK	2
81348	QQB575R30T0375	6145-00-191-8404	BULK	3
56501	RA853	5940-00-204-8966	3	31
56501	RA853	5940-00-204-8966	3	34
56501	RA853	5940-00-204-8966	3	37
56501	RA853	5940-00-204-8966	3	75
56501	RA853	5940-00-204-8966	3	78
56501	RA853	5940-00-204-8966	3	82
87335	S-404	5640-01-195-6254	BULK	1
71400	S-8301-2	5920-01-366-0796	4	15
91343	SAE J1508-06		7	89
6G317	SNL1616-3,I-CW	4140-01-492-1602	6	33

CAGEC	PART NUMBER	STOCK NUMBER	FIG.	ITEM
6G317	SNL1627-4,I-CW	4140-01-492-0968	6	24
05693	SSPQ-43	5320-01-094-0388	1	20
05693	SSPV-64	5320-01-258-4675	14	8
05693	SSPV-64	5320-01-258-4675	14	15
05693	SSPV-64	5320-01-258-4675	14	23
05693	SSPV-64	5320-01-258-4675	14	31
1HM04	TDF-220-AKB-24H	6645-01-484-9671	4	29
74951	V-1234-25	5330-01-391-2800	BULK	13
12697	VC10F-5K		3	155
41947	W-2009	4730-01-397-1195	7	78
41947	W-2009	4730-01-397-1195	10	25
41947	W-2312	4730-00-277-7922	10	51
41947	W1739	4730-00-021-4173	7	36
41947	W2612	4730-00-068-3362	10	52
41947	W2716	4730-00-471-5663	7	81
41947	W2722	4730-00-818-5190	7	23
41947	W2734	4730-00-625-6215	7	56
41947	W2834	4730-00-690-0120	7	51
41947	W4008	4730-00-263-6470	7	42
76385	Z-208		7	58
14569	002-0358-00		11	40
14569	003-0060-00		11	58
14569	003-0099-00		11	51
14569	003-0112-02		11	25
14569	005-0288-00		11	29
14569	006-0012-01		11	12
14569	011-0001-03		11	34
14569	013-0010-01		11	5
14569	020-0012-11		11	4
14569	020-0054-00		11	30
14569	020-0125-04		11	43
14569	020-0159-00	5330-00-359-6272	11	52
14569	020-0611-00		11	42
14569	020-0732-00	5330-01-276-5774	11	33
14569	020-0749-00	5330-01-450-6166	11	37
14569	020-0844-00	5331-01-484-7302	11	23
14569	021-0005-00		11	20
14569	025-0008-00		11	47
14569	027-0192-00	5365-01-485-0522	11	10
14569	036-0008-02	4130-01-032-0828	11	38
14569	062-0058-00	5940-00-981-2568	11	19
14569	071-0429-30		11	45
14569	074-0619-00		11	11
14569	100-0012-06		11	15
14569	100-0013-02	5305-00-981-2570	11	21
14569	100-0013-13	5305-01-058-1191	11	2
14569	100-0013-20		11	32
14569	100-0028-04	5305-00-981-2578	11	44

CAGEC	PART NUMBER	STOCK NUMBER	FIG.	ITEM
14569	100-0062-44		11	27
14569	100-0062-46		11	56
14569	100-0062-52		11	39
14569	100-0063-02		11	18
14569	100-0077-01		11	24
14569	100-0180-02		11	16
14569	100-0182-03		11	35
14569	100-0218-02		11	28
14569	101-0002-12		11	13
14569	101-0006-00		11	9
14569	101-0024-01		11	7
14569	102-0010-08	5310-00-981-2584	11	57
14569	102-0010-11		11	14
14569	103-0025-06		11	8
61510	1085A27G02	6685-00-924-9434	9	5
02795	12MBS-4141B-111/2IN	4720-00-116-7493	7	53
94833	120K1491	9905-01-493-8110	14	2
94833	120K1504-1	9905-01-493-8749	5	12
94833	120K1504-3	9905-01-493-8748	5	13
94833	120K1520	9905-01-484-4562	14	3
92966	120MB	6240-00-939-7859	4	11
94833	12075-7-1500		7	43
94833	12075-7-2375		7	41
94833	12075-9-2875		7	52
94833	12075-9-9500		7	59
94833	12076-3-1000		8	10
94833	12076-3-1000		8	15
94833	12076-5-2125		7	72
94833	12076-5-2500		7	75
94833	12076-5-9375		7	83
94833	12076-5-938		7	77
70510	1212FY		7	44
94833	12284-5-5000		1	9
94833	12284-5-9750		1	8
94833	12290-8-8000	4010-01-491-9408	1	21
94833	12290-8-8000	4010-01-491-9408	BULK	5
83330	125-0410-1132-403	6210-00-840-0848	4	12
83330	125-1191-403	6210-01-098-3886	4	10
97403	13211E8376-6		10	2
97403	13211E8376-8		7	7
97403	13214E0600-219		BULK	12
97403	13216E6176-6	4730-00-027-0773	10	21
93061	14FSX-6	4730-00-189-2739	7	10
93061	14FSX-6	4730-00-189-2739	7	64
93061	14FSX-6	4730-00-189-2739	7	71

CAGEC	PART NUMBER	STOCK NUMBER	FIG.	ITEM
93061	14FSX-6	4730-00-189-2739	7	87
93061	14FSX-6	4730-00-189-2739	10	29
56501	142	5975-00-642-7261	4	48
56501	142	5975-00-642-7261	5	5
56501	142	5975-00-642-7261	11	59
94833	148K0022-1	3040-01-491-9273	6	34
94833	148K0024-1		7	30
94833	148K0025		12	10
94833	148K0028-1	4110-01-491-4284	12	3
94833	148K0029		12	5
94833	148K0034-1		10	12
94833	148K0035-1		10	64
94833	148K0069-1		10	57
94833	148K0073-1	5340-01-491-4667	1	15
94833	148K0074-1	5340-01-492-4439	14	9
94833	148K0075-1		14	14
94833	148K0077		14	16
94833	148K0103-1	5340-01-492-4334	1	5
94833	148K0110-1	5340-01-492-4615	1	13
94833	148K0142		12	9
94833	148K0143		13	3
94833	148K0144		13	4
94833	148K0145-1	5340-01-492-4343	1	10
94833	148K0155		10	43
94833	148K0156		10	19
94833	148K0157-1		1	18
94833	148K0158		1	22
94833	148K0164-1	9905-01-483-3661	14	5
94833	148K0164-3	9905-01-483-3664	14	4
94833	148K0164-5	9905-01-483-3658	14	6
94833	148K0168		10	47
94833	148K0169		10	28
94833	148K0169-1		10	27
94833	148K0170		10	30
94833	148K0171		10	35
94833	148K0171-1		10	33
94833	148K0172		10	24
94833	148K0173		10	49
94833	148K0174		10	26
94833	148K0203		1	23
94833	148K0238-1	5340-01-492-4354	6	8
94833	148K0239-1		6	3
94833	148K0239-1/3		6	6
94833	148K0239-1/4		6	7
94833	148K0246-1		1	7
94833	149K0000-1/141		5	18
94833	149K0000-1/178		5	19

CAGEC	PART NUMBER	STOCK NUMBER	FIG.	ITEM
94833	149K0000-1/99		7	50
94833	149K0000/162		7	60
94833	149K0001-1		14	7
94833	149K0009-1		2	11
94833	149K0009-1/50		4	23
94833	149K0010-1	9905-01-493-8107	4	47
94833	149K0017-1		4	51
94833	149K0018-1		5	4
94833	149K0020-1		5	14
94833	149K0021-1		3	3
94833	149K0021-1/1		3	5
94833	149K0021-10 TO 13		3	21
94833	149K0021-10/13		3	25
94833	149K0021-14		3	26
94833	149K0021-14/3		3	28
94833	149K0021-15		3	29
94833	149K0021-16		3	30
94833	149K0021-16/3		3	32
94833	149K0021-17		3	33
94833	149K0021-17/3		3	35
94833	149K0021-18		3	36
94833	149K0021-18/3		3	38
94833	149K0021-19 TO 22		3	39
94833	149K0021-19/14		3	43
94833	149K0021-2		3	6
94833	149K0021-2/1		3	8
94833	149K0021-23		3	44
94833	149K0021-23/3		3	46
94833	149K0021-24		3	47
94833	149K0021-24/3		3	49
94833	149K0021-25		3	50
94833	149K0021-25/3		3	53
94833	149K0021-26		3	54
94833	149K0021-26/3		3	57
94833	149K0021-27		3	58
94833	149K0021-27/3		3	60
94833	149K0021-28		3	61
94833	149K0021-28/3		3	65
94833	149K0021-29		3	66
94833	149K0021-29/3		3	68
94833	149K0021-3		3	9
94833	149K0021-3/1		3	11
94833	149K0021-30		3	69
94833	149K0021-30/3		3	73
94833	149K0021-31		3	74
94833	149K0021-31/3		3	76
94833	149K0021-32		3	77

CAGEC	PART NUMBER	STOCK NUMBER	FIG.	ITEM
94833	149K0021-32/3		3	79
94833	149K0021-33		3	80
94833	149K0021-33/3		3	83
94833	149K0021-34		3	84
94833	149K0021-34/3		3	86
94833	149K0021-35		3	87
94833	149K0021-35/3		3	89
94833	149K0021-36		3	90
94833	149K0021-36/3		3	93
94833	149K0021-37		3	94
94833	149K0021-37/3		3	97
94833	149K0021-38		3	98
94833	149K0021-38/3		3	101
94833	149K0021-39		3	102
94833	149K0021-39/3		3	104
94833	149K0021-4		3	12
94833	149K0021-40		3	105
94833	149K0021-40/3		3	109
94833	149K0021-41		3	110
94833	149K0021-41/3		3	114
94833	149K0021-42		3	115
94833	149K0021-42/3		3	117
94833	149K0021-43		3	118
94833	149K0021-43/3		3	120
94833	149K0021-44		3	121
94833	149K0021-44/3		3	124
94833	149K0021-45		3	125
94833	149K0021-45/3		3	129
94833	149K0021-46		3	130
94833	149K0021-46/3		3	132
94833	149K0021-47		3	133
94833	149K0021-47/3		3	137
94833	149K0021-48		3	138
94833	149K0021-48/3		3	140
94833	149K0021-49		3	141
94833	149K0021-49/1		3	143
94833	149K0021-5		3	13
94833	149K0021-50		3	144
94833	149K0021-50/3		3	147
94833	149K0021-51		3	148
94833	149K0021-51/3		3	150
94833	149K0021-52		3	156
94833	149K0021-52/1		3	158
94833	149K0021-53		3	159
94833	149K0021-53/1		3	161
94833	149K0021-54		3	162

CAGEC	PART NUMBER	STOCK NUMBER	FIG.	ITEM
94833	149K0021-54/1		3	164
94833	149K0021-55		3	165
94833	149K0021-55/1		3	167
94833	149K0021-56		3	168
94833	149K0021-56/1		3	171
94833	149K0021-57		3	172
94833	149K0021-57/1		3	175
94833	149K0021-6		3	14
94833	149K0021-7		3	15
94833	149K0021-7/2		3	17
94833	149K0021-8		3	18
94833	149K0021-8/2		3	20
94833	149K0032		4	45
94833	149K0034-1	5340-01-492-4447	14	17
94833	149K0035-1		14	22
94833	149K0037		14	24
94833	149K0037		14	32
94833	149K0038-1	5340-01-492-4448	14	25
94833	149K0039-1		14	30
94833	149K0051-1		8	9
94833	149K0051-1/3		8	12
94833	149K0051-3		8	14
94833	149K0051-3/3		8	17
94833	149K0052-1		7	20
94833	149K0052-1/T		7	22
94833	149K0053-1		7	9
94833	149K0053-1/T		7	11
94833	149K0055-1		7	73
94833	149K0056		6	31
94833	149K0056		10	6
94833	149K0057		7	57
94833	149K0058		7	54
94833	149K0059-1		7	45
94833	149K0059-1/T		7	47
94833	149K0061		7	35
94833	149K0063-1		7	63
94833	149K0063-1/T		7	65
94833	149K0064-1		7	86
94833	149K0064-1/T		7	88
94833	149K0065		7	84
94833	149K0069		14	38
94833	149K0070-1	5340-01-492-4453	14	34
94833	149K0072-1		14	36
94833	149K0072-3		14	37
94833	149K0073		14	35
94833	149K0074		7	79
94833	149K0075		7	26

CAGEC	PART NUMBER	STOCK NUMBER	FIG.	ITEM
94833	150K0096		4	46
94833	150K0168-1		13	2
94833	150K0183		4	35
94833	150K0201-1		4	38
94833	150K0201-1/1		4	41
94833	150K0201-1/3		4	40
94833	151K0018		4	6
94833	151K0020		4	33
94833	151K0030		4	4
94833	151K0031		4	5
94833	151K0041-1	5930-01-491-6595	4	43
94833	151K0042-1		3	151
94833	151K0042-1/4		3	154
94833	152K0100		6	22
94833	152K0104-5		12	7
94833	152K0104-7		12	8
94833	152K0127-3		12	1
94833	152K0131		2	9
94833	152K0131		12	2
94833	152K0133-1		6	23
94833	152K0183-1		11	63
94833	152K0183-1/1		11	66
94833	152K0183-3		6	13
94833	152K0183-3/1		6	16
94833	152K0189-1	6110-01-484-4674	4	20
94833	152K0194		10	46
89346	165565R1	5940-00-143-4661	3	22
80064	1755702	6145-00-578-6602	BULK	22
74400	20007	6645-01-477-5316	4	27
14859	2064OL15-496-210 L45-2.10	5930-01-211-3339	10	32
97765	24591	5330-01-333-8101	7	19
59730	2535	5975-00-539-6912	4	49
59730	2535	5975-00-539-6912	5	6
59730	2535	5975-00-539-6912	11	60
97765	27036	4820-01-485-0527	7	13
97765	27742	4820-01-492-3321	7	12
91265	3134	5325-01-088-7468	10	62
59730	3302M	5975-00-152-1144	6	17
97765	3391		7	17
97765	3738		7	62
81349	39TB2	5940-00-983-6122	4	42
07295	40570	4730-01-092-3835	7	48
00779	41798	5940-00-143-4661	3	40
00779	42282-2	5940-00-620-9780	3	63
00779	42282-2	5940-00-620-9780	3	71
00779	42282-2	5940-00-620-9780	3	106

CAGEC	PART NUMBER	STOCK NUMBER	FIG.	ITEM
00779	42282-2	5940-00-620-9780	3	111
00779	42282-2	5940-00-620-9780	3	126
00779	42282-2	5940-00-620-9780	3	134
00779	42565-2	5940-01-091-2560	7	67
00779	42599-2	5940-00-948-9686	3	48
00779	42599-2	5940-00-948-9686	3	55
00779	42599-2	5940-00-948-9686	3	59
00779	42599-2	5940-00-948-9686	3	81
00779	42599-2	5940-00-948-9686	3	85
00779	42599-2	5940-00-948-9686	3	88
00779	42599-2	5940-00-948-9686	3	92
00779	42599-2	5940-00-948-9686	3	95
00779	42599-2	5940-00-948-9686	3	99
00779	480053-3	5970-00-494-8284	7	68
00779	480054-3	5970-00-494-8285	3	23
00779	480054-3	5970-00-494-8285	3	41
00779	480054-3	5970-00-494-8285	3	64
00779	480054-3	5970-00-494-8285	3	72
00779	480054-3	5970-00-494-8285	3	107
00779	480054-3	5970-00-494-8285	3	112
00779	480054-3	5970-00-494-8285	3	127
00779	480054-3	5970-00-494-8285	3	135
94833	500K1662-3-3.36		5	21
94833	500K1849-5	4130-01-491-4280	7	34
94833	500K1854-1	4820-01-492-2995	7	55
94833	500K1857-1C	6685-00-948-0928	9	6
94833	500K1861-1	6105-01-491-7662	6	18
94833	500K1866	3130-01-485-1737	6	32
94833	500K1866	3130-01-485-1737	10	56
94833	500K1904-1	5945-01-485-1175	4	25
94833	500K1914-3	5925-01-492-3308	4	9
94833	500K1915-5	6145-01-484-4081	BULK	4
94833	500K1926-1		4	22
94833	500K1926-1		5	17
94833	500K1926-2		1	12
94833	500K1926-3		4	18
94833	500K1926-3		10	4
94833	500K1926-3		10	18
94833	500K1926-4		5	3
94833	500K1926-4		7	29
94833	500K1926-5		7	16
94833	500K1926-6		6	20
94833	500K1926-6		10	10
94833	500K1926-6		10	54
94833	500K1926-6		11	62
94833	500K1927-1		4	26

CAGEC	PART NUMBER	STOCK NUMBER	FIG.	ITEM
94833	500K1927-1		5	15
94833	500K1927-1		9	1
94833	500K1927-2		4	36
94833	500K1927-2		5	8
94833	500K1927-2		10	39
94833	500K1927-3		2	5
94833	500K1927-3		8	6
94833	500K1927-3		10	1
94833	500K1927-3		10	13
94833	500K1927-4		7	27
94833	500K1927-5		7	14
94833	500K1927-6		6	19
94833	500K1927-6		10	53
94833	500K1927-6		11	61
94833	500K1927-9		1	19
94833	500K1928-1		4	7
94833	500K1928-13		1	11
94833	500K1927-6		2	6
94833	500K1927-6		2	12
94833	500K1927-6		4	1
94833	500K1927-6		7	37
94833	500K1927-6		8	1
94833	500K1928-20		1	4
94833	500K1927-6		1	1
94833	500K1927-6		6	1
94833	500K1927-6		7	1
94833	500K1927-6		10	15
94833	500K1927-6		14	10
94833	500K1927-6		14	18
94833	500K1927-6		14	26
94833	500K1928-22		1	14
94833	500K1928-22		2	1
94833	500K1928-22		7	24
94833	500K1928-22		8	7
94833	500K1928-22		10	3
94833	500K1928-25		7	5
94833	500K1928-28		5	1
94833	500K1928-30		6	29
94833	500K1928-31		7	28
94833	500K1928-35		7	61
94833	500K1928-44		6	11
94833	500K1928-46		7	15
94833	500K1928-5		4	21
94833	500K1928-59		10	55
94833	500K1947	9905-01-484-3216	7	32
94833	500K1948	9905-01-484-7604	6	5

CAGEC	PART NUMBER	STOCK NUMBER	FIG.	ITEM
94833	500K1948	9905-01-484-7604	7	33
94833	500K1950-1		4	8
94833	500K1948		1	2
94833	500K1948	9905-01-484-7604	2	2
94833	500K1948	9905-01-484-7604	2	13
94833	500K1948	9905-01-484-7604	4	2
94833	500K1948	9905-01-484-7604	6	2
94833	500K1948	9905-01-484-7604	7	2
94833	500K1948	9905-01-484-7604	8	2
94833	500K1948	9905-01-484-7604	10	14
94833	500K1948	9905-01-484-7604	14	11
94833	500K1950-3		14	19
94833	500K1950-3		14	27
94833	500K1950-4		5	2
94833	500K1950-5		6	12
94833	500K1950-6		6	30
94833	500K1955	3020-01-485-0468	6	25
94833	500K2031-139		6	4
94833	500K2031-139		7	31
94833	500K2031-139		14	1
94833	500K2031-151		14	33
94833	500K2042		10	7
0BWF3	500583PC9		4	16
14569	504-0001-59		11	48
14569	505-0013-04		11	36
14569	505-0252-10		11	17
14569	509-0034-04		11	31
14569	510-0142-00	4820-00-980-1671	11	55
14569	510-0209-00		11	54
14569	510-0218-01		11	6
14569	513-0004-00		11	53
14569	521-0018-00	4130-00-981-2582	11	22
94833	53572-6-76		10	9
94833	53573-10-36		1	24
94833	53575-10-8		4	17
94833	53575-6-20		5	16
94833	53581-8-20		12	4
94833	53581-8-32		12	6
14569	536-0002-00	4130-00-235-6381	11	49
94833	54090-9-8750		7	90
95535	55229	4710-00-424-2694	BULK	17
14569	570-0006-00		11	50
00779	61045-2	5940-01-063-9908	4	24
21574	62104	5940-01-491-8499	5	10
28193	6263N	4820-00-287-3325	7	74
02413	800E2730	4710-00-277-5527	BULK	16

CAGEC	PART NUMBER	STOCK NUMBER	FIG.	ITEM
70485	806	5340-00-598-7840	14	13
70485	806	5340-00-598-7840	14	21
70485	806	5340-00-598-7840	14	29
19207	8689211	4710-00-277-4508	BULK	18
19203	8830092	5310-00-881-0715	10	66
97765	983-430	5340-01-485-0689	7	18
OSN36	983921C	4130-01-492-0982	10	58
14569	998-0510-13		11	3
14569	998-0661-59	4130-01-492-7193	11	41

END OF WORK PACKAGE

THIS PAGE INTENTIONALLY LEFT BLANK

By Order of the Secretary of the Army:

Official:



JOEL B. HUDSON

*Administrative Assistant to the
Secretary of the Army*

0406411

PETER J. SCHOOMAKER
General, United States Army
Chief of Staff

DISTRIBUTION:

To be distributed in accordance with initial distribution number (IDN) 256788 requirements for TM 9-4110-254-24P.

THIS PAGE INTENTIONALLY LEFT BLANK

These are the instructions for sending an electronic 2028

The following format must be used if submitting an electronic 2028. The subject line must be exactly the same and all fields must be included; however only the following fields are mandatory: 1, 3, 4, 5, 6, 7, 8, 9, 10, 13, 15, 16, 17, and 27.

From: •Whomever" <whomever@avma27.army.mil>
To: amssbriml@natick.army.mil

Subject: DA Form 2028

1. From: Joe Smith
2. Unit: home
3. Address: 4300 Park
4. City: Hometown
5. St: MO
6. Zip: 77777
7. Date Sent: 19-OCT-93
8. Pub no: 55-2840-229-23
9. Pub Title: TM
10. Publication Date: 04-JUL-85
11. Change Number: 7
12. Submitter Rank: MSG
13. Submitter FName: Joe
14. Submitter MName: T
15. Submitter LName: Smith
16. Submitter Phone: 123-123-1234
17. Problem: 1
18. Page: 2
19. Paragraph: 3
20. Line: 4
21. NSN: 5
22. Reference: 6
23. Figure: 7
24. Table: 8
25. Item: 9
26. Total: 123
27. Text:

This is the text for the problem below line 27.

THIS PAGE INTENTIONALLY LEFT BLANK

RECOMMENDED CHANGES TO PUBLICATIONS AND BLANK FORMS For use of this form, see AR 25-30; the proponent agency is ODISC4.						Use Part II (<i>reverse</i>) for Repair Parts and Special Tool Lists (RPSTL) and Supply Catalogs/Supply Manuals (SC/SM).	DATE 21 October 2003
TO: (<i>Forward to proponent of publication or form</i>) (<i>Include ZIP Code</i>) COMMANDER U.S. ARMY TANK-AUTOMOTIVE AND ARMAMENT COMMAND ATTN: AMSTA-LC-CECT KANSAS STREET NATICK, MA 01760-5052						FROM: (<i>Activity and location</i>) (<i>Include ZIP Code</i>) <i>PFC Jane Doe</i> <i>CO A 3rd Engineer BR</i> <i>Ft. Leonardwood, MO 63108</i>	
PART I – ALL PUBLICATIONS (EXCEPT RPSTL AND SC/SM) AND BLANK FORMS							
PUBLICATION/FORM NUMBER TM 10-1670-296-23&P				DATE 30 October 2002	TITLE Unit Manual for Ancillary Equipment for Low Velocity Air Drop Systems		
ITEM NO.	PAGE NO.	PARA-GRAPH	LINE NO. *	FIGURE NO.	TABLE NO.	RECOMMENDED CHANGES AND REASON <i>(Provide exact wording of recommended changes, if possible).</i>	
	0036 00-2				1	<i>In table 1, Sewing Machine Code Symbols, the second sewing machine code symbol should be MD ZZ not MD 22.</i> <i>Change the manual to show Sewing Machine, Industrial: Zig-Zag; 308 stitch; medium-duty; NSN 3530-01-181-1421 as a MD ZZ code symbol.</i>	
<i>*Reference to line numbers within the paragraph or subparagraph.</i>							
TYPED NAME, GRADE OR TITLE Jane Doe, PFC				TELEPHONE EXCHANGE/AUTOVON, PLUS EXTENSION 508-233-4141		SIGNATURE Jane Doe <i>Jane Doe</i>	

TO: <i>(Forward direct to addressee listed in publication)</i> COMMANDER U.S. ARMY TANK –AUTOMOTIVE AND ARMAMENT COMMAND ATTN: AMSTA-LC-CECT KANSAS STREET NATICK, MA 01760-5052	FROM: <i>(Activity and location) (Include ZIP Code)</i> <i>PFC Jane Doe</i> <i>CO A 3rd Engineer BR</i> <i>Ft. Leonardwood, MO 63108</i>	DATE 21 October 2003
--	---	--------------------------------

PART II – REPAIR PARTS AND SPECIAL TOOL LISTS AND SUPPLY CATALOGS/SUPPLY MANUALS

PUBLICATION NUMBER TM 10-1670-296-23&P	DATE 30 October 2002	TITLE Unit Manual for Ancillary Equipment for Low Velocity Air Drop Systems
--	--------------------------------	---

PAGE NO.	COLM NO.	LINE NO.	NATIONAL STOCK NUMBER	REFERENCE NO.	FIGURE NO.	ITEM NO.	TOTAL NO. OF MAJOR ITEMS SUPPORTED	RECOMMENDED ACTION
0066 00-1					4			<i>Callout 16 in figure 4 is pointed to a <u>D-Ring</u>. In the Repair Parts List key for figure 4, item 16 is called a <u>Snap Hook</u>. Please correct one or the other.</i>

PART III – REMARKS *(Any general remarks or recommendations, or suggestions for improvement of publications and blank forms. Additional blank sheets may be used if more space is needed.)*

--	--	--

TYPED NAME, GRADE OR TITLE	TELEPHONE EXCHANGE/AUTOVON, PLUS EXTENSION	SIGNATURE
----------------------------	--	-----------

RECOMMENDED CHANGES TO PUBLICATIONS AND BLANK FORMS						Use Part II (<i>reverse</i>) for Repair Parts and Special Tool Lists (RPSTL) and Supply Catalogs/Supply Manuals (SC/SM).	DATE
For use of this form, see AR 25-30; the proponent agency is ODISC4.							
TO: (<i>Forward to proponent of publication or form</i>) (<i>Include ZIP Code</i>) COMMANDER U.S. ARMY TANK-AUTOMOTIVE AND ARMAMENT COMMAND ATTN: AMSTA-LC-CECT KANSAS STREET NATICK, MA 01760-5052						FROM: (<i>Activity and location</i>) (<i>Include ZIP Code</i>)	
PART I – ALL PUBLICATIONS (EXCEPT RPSTL AND SC/SM) AND BLANK FORMS							
PUBLICATION/FORM NUMBER						DATE	TITLE
ITEM NO.	PAGE NO.	PARA-GRAPH	LINE NO. *	FIGURE NO.	TABLE NO.	RECOMMENDED CHANGES AND REASON <i>(Provide exact wording of recommended changes, if possible).</i>	
<i>*Reference to line numbers within the paragraph or subparagraph.</i>							
TYPED NAME, GRADE OR TITLE				TELEPHONE EXCHANGE/AUTOVON, PLUS EXTENSION		SIGNATURE	

TO: <i>(Forward direct to addressee listed in publication)</i> COMMANDER US ARMY TANK-AUTOMOTIVE AND ARMAMENT COMMAND ATTN: AMSTA-LC-CECT KANSAS STREET NATICK, MA 01760-5052	FROM: <i>(Activity and location) (Include ZIP Code)</i>	DATE
---	--	-------------

PART II - REPAIR PARTS AND SPECIAL TOOL LISTS AND SUPPLY CATALOGS/SUPPLY MANUALS

PUBLICATION NUMBER TM 9-4110-254-24P	DATE 31 March 2004	TITLE Unit, Direct Support, and General Support Maintenance Repair Parts and Special Tools List for the Refrigeration Unit, Mechanical, 5K BTU, Electric Model F500RE
--	------------------------------	--

PAGE NO.	COLM NO.	LINE NO.	NATIONAL STOCK NUMBER	REFERENCE NO.	FIGURE NO.	ITEM NO.	TOTAL NO. OF MAJOR ITEMS SUPPORTED	RECOMMENDED ACTION

PART III - REMARKS *(Any general remarks or recommendations, or suggestions for improvement of publications and blank forms. Additional blank sheets may be used if more space is needed.)*

Empty space for remarks

TYPED NAME, GRADE OR TITLE	TELEPHONE EXCHANGE/AUTOVON, PLUS EXTENSION	SIGNATURE
----------------------------	--	-----------

RECOMMENDED CHANGES TO PUBLICATIONS AND BLANK FORMS						Use Part II (<i>reverse</i>) for Repair Parts and Special Tool Lists (RPSTL) and Supply Catalogs/Supply Manuals (SC/SM).	DATE
For use of this form, see AR 25-30; the proponent agency is ODISC4.							
TO: (<i>Forward to proponent of publication or form</i>) (<i>Include ZIP Code</i>) COMMANDER U.S. ARMY TANK-AUTOMOTIVE AND ARMAMENT COMMAND ATTN: AMSTA-LC-CECT KANSAS STREET NATICK, MA 01760-5052						FROM: (<i>Activity and location</i>) (<i>Include ZIP Code</i>)	
PART I – ALL PUBLICATIONS (EXCEPT RPSTL AND SC/SM) AND BLANK FORMS							
PUBLICATION/FORM NUMBER						DATE	TITLE
ITEM NO.	PAGE NO.	PARA-GRAPH	LINE NO. *	FIGURE NO.	TABLE NO.	RECOMMENDED CHANGES AND REASON <i>(Provide exact wording of recommended changes, if possible).</i>	
<i>*Reference to line numbers within the paragraph or subparagraph.</i>							
TYPED NAME, GRADE OR TITLE				TELEPHONE EXCHANGE/AUTOVON, PLUS EXTENSION		SIGNATURE	

TO: <i>(Forward direct to addressee listed in publication)</i> COMMANDER US ARMY TANK-AUTOMOTIVE AND ARMAMENT COMMAND ATTN: AMSTA-LC-CECT KANSAS STREET NATICK, MA 01760-5052	FROM: <i>(Activity and location) (Include ZIP Code)</i>	DATE
---	--	-------------

PART II - REPAIR PARTS AND SPECIAL TOOL LISTS AND SUPPLY CATALOGS/SUPPLY MANUALS

PUBLICATION NUMBER TM 9-4110-254-24P	DATE 31 March 2004	TITLE Unit, Direct Support, and General Support Maintenance Repair Parts and Special Tools List for the Refrigeration Unit, Mechanical, 5K BTU, Electric Model F500RE
--	------------------------------	--

PAGE NO.	COLM NO.	LINE NO.	NATIONAL STOCK NUMBER	REFERENCE NO.	FIGURE NO.	ITEM NO.	TOTAL NO. OF MAJOR ITEMS SUPPORTED	RECOMMENDED ACTION

PART III - REMARKS *(Any general remarks or recommendations, or suggestions for improvement of publications and blank forms. Additional blank sheets may be used if more space is needed.)*

Empty space for remarks

TYPED NAME, GRADE OR TITLE	TELEPHONE EXCHANGE/AUTOVON, PLUS EXTENSION	SIGNATURE
----------------------------	--	-----------

The Metric System and Equivalents

Linear Measure

1 centimeter = 10 millimeters = .39 inch
 1 decimeter = 10 centimeters = 3.94 inches
 1 meter = 10 decimeters = 39.37 inches
 1 dekameter = 10 meters = 32.8 feet
 1 hectometer = 10 dekameters = 328.08 feet
 1 kilometer = 10 hectometers = 3,280.8 feet

Weights

1 centigram = 10 milligrams = .15 grain
 1 decigram = 10 centigrams = 1.54 grains
 1 gram = 10 decigrams = .035 ounce
 1 dekagram = 10 grams = .35 ounce
 1 hectogram = 10 dekagrams = 3.52 ounces
 1 kilogram = 10 hectograms = 2.2 pounds
 1 quintal = 100 kilograms = 220.46 pounds
 1 metric ton = 10 quintals = 1.1 short tons

Liquid Measure

1 centiliter = 10 milliliters = .34 fl. ounce
 1 deciliter = 10 centiliters = 3.38 fl. ounces
 1 liter = 10 deciliters = 33.81 fl. ounces
 1 dekaliter = 10 liters = 2.64 gallons
 1 hectoliter = 10 dekaliters = 26.42 gallons
 1 kiloliter = 10 hectoliters = 264.18 gallons

Square Measure

1 sq. centimeter = 100 sq. millimeters = .155 sq. inch
 1 sq. decimeter = 100 sq. centimeters = 15.5 sq. inches
 1 sq. meter (centare) = 100 sq. decimeters = 10.76 sq. feet
 1 sq. dekameter (are) = 100 sq. meters = 1,076.4 sq. feet
 1 sq. hectometer (hectare) = 100 sq. dekameters = 2.47 acres
 1 sq. kilometer = 100 sq. hectometers = .386 sq. mile

Cubic Measure

1 cu. centimeter = 1000 cu. millimeters = .06 cu. inch
 1 cu. decimeter = 1000 cu. centimeters = 61.02 cu. inches
 1 cu. meter = 1000 cu. decimeters = 35.31 feet

Approximate Conversion Factors

<i>To change</i>	<i>To</i>	<i>Multiply by</i>	<i>To change</i>	<i>To</i>	<i>Multiply by</i>
inches	centimeters	2.540	ounce-inches	newton-meters	.007062
feet	meters	.305	centimeters	inches	.394
yards	meters	.914	meters	feet	3.280
miles	kilometers	1.609	meters	yards	1.094
square inches	square centimeters	6.451	kilometers	miles	.621
square feet	square meters	.093	square centimeters	square inches	.155
square yards	square meters	.836	square meters	square feet	10.764
square miles	square kilometers	2.590	square meters	square yards	1.196
acres	square hectometers	.405	square kilometers	square miles	.386
cubic feet	cubic meters	.028	square hectometers	acres	2.471
cubic yards	cubic meters	.765	cubic meters	cubic feet	35.315
fluid ounces	milliliters	29.573	cubic meters	cubic yards	1.308
pints	liters	.473	milliliters	fluid ounces	.034
quarts	liters	.946	liters	pints	2.113
gallons	liters	3.785	liters	quarts	1.057
ounces	grams	28.349	liters	gallons	.264
pounds	kilograms	.454	grams	ounces	.035
short tons	metric tons	.907	kilograms	pounds	2.205
pound-feet	newton-meters	1.356	metric tons	short tons	1.102
pound-inches	newton-meters	.11296			

Temperature (Exact)

_F	Fahrenheit temperature	5/9 (after subtracting 32)	Celsius temperature	_C
----	---------------------------	-------------------------------	------------------------	----

PIN: 081334-000